

Pollokshields Primary School



School Handbook 2019-2020



Welcome to Pollokshields Primary School

I would like to welcome you and your child to Pollokshields Primary. This handbook contains a range of information that you might find helpful. Please do not hesitate to contact the school or check the school website if you need more information.

I hope that this handbook gives you a glimpse of life at Pollokshields Primary School. We look forward to having you and your child work with us and hope that this will be the start of a strong partnership.

Carol Wood



Last updated on 31 October 2019

School Vision & Values



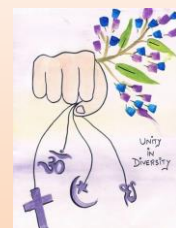
Pollokshields Primary School is a vibrant, multi-cultural school which offers every child the challenge, opportunities and pace required to achieve their potential. This is based firmly in line with the UNCRC's **Article 29**: -

“Education should develop each child’s personality and talents to the fullest. It should encourage children to respect their parents, and their own and other cultures”.

We are a nurturing school which celebrates the diversity of our community and through working together with children, their families and the community we have achieved a shared sense of direction based on our values of:-



- **Caring and Sharing-** Respect
- **Fair and Equal-** Justice
- **Smart and Sensible-**Wisdom
- **Honest and Trustworthy-** Integrity



As a result we have a positive, inclusive ethos, where children, staff, parents and partners feel welcomed and valued.

School Information

You can cut out the following information and have it on your fridge, purse or work desk etc. for ease of finding the numbers required.

Contact Details:

241 Albert Drive
Glasgow
G41 2NA
Phone: **0141 423 1363**
Email: headteacher@glasgow-pri.glasgow.sch.uk

School Term Dates

Details of school term dates are available on the Glasgow City Council website:
<https://www.glasgow.gov.uk/index.aspx?articleid=17024>

Background information:



The **GIRFEC approach** is based on values and principles which support children's and parents' rights.

*"Getting it right for every child (**GIRFEC**) is the Scottish Government's approach to supporting children and young people. It is intended as a framework that will allow organisations who work on behalf of the country's children and their families to provide a consistent, supportive approach for all."*





School staff- Parents will be updated on any changes as required.

Office Staff-

Carole Makeham (fulltime)
Tricia McMonagle (Mondays and Tuesdays)
Leighanne Haq (Wednesday-Friday)
Nisa Uddin (Mondays)

Teaching

P1a-Maryam Nawaz
P1b-Hannah Lister
P2a-Rizwana Firdos
P2b-Perinne Choudroy (replacing Joanna Gordon on mat leave)
P3a-Jenny Halsall
P3b-Lynsey Byrne
P4a-Sam Harte
P4b-Christine Bradai
P5-Nathalie Belcher
P6a-Sarah Rossi (PEF funded)
P6b-Susan Ewington
P7a Paige Mullen (PEF funded)
P7b-Stewart Mclellan

- Nurture Teacher –Caroline Gray (also trained Mrs Firdos /Mrs Byrne in training)
- EAL teachers-Miss Dixon (on mat leave replaced by Frances Burn + Shirley Taylor)
- Learning support-Mary Gallagher (Mon-Wed) + Lynne Hamilton (Wed-Fri also NCCT cover)
- Maths Chlol/french-Lewis Pollock
- Literacy Chlol-Laura Mitchel (writing support)

Support for Learning Workers-supporting in class and playground

- Helen Gracie-Nurture Assistant (full time)
- Linda Docherty and Jennifer Sutherland (first aider)-(both full time)
- Catherine Winnie (Monday-Thursday)
- Irene Gregory (Monday-Wednesday)

Home Link Assistant-supporting families and improving/raising attendance

Shabnam Iqbal

Dining Supervisors

Nisa Uddin
Bibi

The leadership team

Headteacher- Carol Wood
Depute-Taz Ahmed (ASN/EAL remit)
Principal teacher-David Naughton (LS/NCCT cover)



Pollokshield's School Day



Breakfast Club

Glasgow's Big Breakfast is available in Pollokshields Primary every school morning from **8am-9am**. Children can enjoy a healthy breakfast of fruit juice, cereal and milk, toast and fresh fruit before the start of the school day. For a cost of £2 per child (£1 for accompanying siblings) and **free for those entitled to school meals**, children have the opportunity to socialise with their friends in a supervised and safe environment. **If you plan to send your child/children to breakfast club, you should inform the staff of any medical dietary requirements.**

There is also a 'Walking Bus' supported by Pupil Equity Funding available to escort children (living within the school catchment area) to Breakfast Club Tues, Wed, Thurs.

School start-

The bell rings at **9am** every morning and children should be lined up in the playground in their line on the bell, ready to be collected by their teacher. **Coming in together as a class creates a sense of belonging and class community.**

Playtime-

Due to the number of children in the school and the size of the school grounds there are 2 different playtimes at Pollokshields- **10.30am and 11am**.

- P1s, 2s, 4s, 5s go out to play at 10.30am, with P1/2 in the infant playground and P4/5 in the senior playground.
- P3s, 6s, 7s go out to play at 11am with P3 in the infant playground and P6/7 in the senior playground.

This promotes positive relationships and behaviour, alongside ensuring the health and safety of all our pupils.

Lunch

Everyone has lunch from 12.15-1pm. **P1 pupils always go for lunch first alongside those with packed lunches and eat in the gym hall.** They are supervised by Bibi, the dining assistant and buddies (P6/7pupils). The other classes have a rota which changes 4 times/year to ensure fairness in terms of how often children get 1st sitting etc. E.g.

Lunch time Rota August-28 October 2019					
	Mondays	Tuesdays	Wednesdays	Thursdays	Fridays
1 st sitting on bell	P2a+2b +P3a	P7a+7b +6b	P6a +P5	P4b+P4a +P3b	P2a+2b +P3a
2 nd sitting -2 bells	P7a+7b +6b	P6a +P5	P4b+P4a +P3b	P2a+2b +P3a	P7a+7b +6b
3 rd sitting- 3 bells	P6 +P5	P4b+P4a +P3b	P2a+2b +P3a	P7a+7b +6b	P6a +P5
4 th sitting- 4 bells	P4b+P4 +P3b	P2a+2b +P3a	P7a+7 +6b	P6a +P5	P4b+P4a +P3b



School finish-School finishes at **3pm for all children**, including P1 children.

Afterschool Care

This runs from **3pm-6m** every day after school and during most holidays. For more information see below:



East Pollokshields Out Of School Care

**LET US COLLECT YOUR CHILD FROM SCHOOL
ACTIVE FUN, HAPPY AND SAFE PLACE FOR PLAY
OPEN DURING SCHOOL HOLIDAYS**

LOCATION: POLLOKSHIELDS PRIMARY SCHOOL, ALBERT DRIVE.

CONTACT: 0141 422 1007 OR VISIT www.eposc.org

RANKED VERY GOOD BY CARE INSPECTORATE!!

EPOSC IS A COMPANY LIMITED BY GUARANTEE WHOSE ACTIVITIES ARE PAID FOR THROUGH PARENTAL FEES SUPPORTED IN PART BY A GRANT FROM GLASGOW CITY COUNCIL



Extra-Curricular Activities



Pollokshields is a **Gold Sports School** and as such runs a variety of during and afterschool clubs for all age groups. The table below gives a flavour of the types of clubs available to our pupils during a particular term. Good links with community organisations and our Active Schools Co-ordinator are vital for the success of these programmes.

Pollokshields Primary Clubs							
Term 2 October - December							
Day	Time	Activity	Stage	Weeks	Dates	Deliverer	Cost
Mon	Breakfast	Badminton	P6/7	4 weeks	28/10, 4/11, 11/11, 18/11	Mr Pollock	Free
	Lunch	Dance	P6/7	6 weeks	28/10, 4/11, 11/11, 18/11, 25/11, 2/12,	Parent	Free
	Afterschool	Football	P6/7	6 weeks	28/10, 4/11, 11/11, 18/11, 25/11, 2/12,	Mr Pollock	£177
	Afterschool	Yoga	P3-5	4 weeks	28/10, 4/11, 11/11, 18/11	Ms Rossi	£118
Tues	Afterschool	Netball	P6/7	6 weeks	29/10, 5/11, 12/11, 19/11, 26/11,3/11	Ms Mitchell	Free
	Afterschool	Games	P3	4 weeks	29/10, 5/11, 12/11, 19/11,	Ms Mullen	£118
Wed	Lunch	Dance	P4/5	4 weeks	23/10, 30/10, 6/10,13/11, 20/11, 27/11, 4/12, 11/12	Parent	Free
	Afterschool	Bridges & Barriers football	P7	4 weeks	23/10, 30/10, 6/10	North Kelvinside	Free
	Afterschool	Fitness	P3/4	4 weeks	30/10, 6/11, 13/11, 20/11,	Ms Belcher	£118
Thurs	Afterschool	Badminton	P5-P7	4 weeks	24/10, 31/10, 7/11, 14/11	Glasgow Clyde	Free
	Afterschool	Girls Football	P5-7	8 weeks	24/10, 31/10, 7/11, 14/11, 21/11, 28/11, 5/12, 12/12	Mr McLellan	Free
	Afterschool	Athletics	P6/7	4 weeks	21/11, 28/11, 5/12, 12/12	Ms Halsall	Free



Communication with Parents

Effective communication and collaboration with parents and carers builds an ethos of partnership working putting the child at the centre. At Pollokshields Primary School we use a variety of ways to keep in touch with you.

Open Door Policy – the senior leadership team are available for all parents and carers at any time providing they are not teaching or in another meeting. Please either pop in to the school office or phone for an appointment.

School gates/playground at 3pm—parents and teachers can also communicate with each other re health, homework, behaviour or any other important issues at this time.

Newsletters – will be sent out on a regular basis to keep parents informed about the work of the school and provide key dates for your diary.

Letters – further information which requires a response may be sent out in letter form.

Text messaging – You will also receive text reminders about events/school closures etc.

School website/Twitter/App – will contain information about the school.

Meetings - Parents and carers are always welcome in the school to discuss any aspect of their child's development and progress. However to avoid disappointment, it is advisable to make an appointment. In addition there are various opportunities throughout the year when parents can discuss their child's progress with the class teacher and view their child's work, e.g.

- Meet the teacher
- Parents evenings
- Class performances, Assemblies
- Learning journal afternoons
- Book Launch

Parents and carers are welcome at other events throughout the school year too such as:-

- Workshops,
- Winter Arts Festival,
- P1 Nativity,
- P7 Leavers assembly
- Burns Afternoon,
- Sports Day,
- Bazaar,
- Community Club

Home Learning

Continuing to learn at home helps children to achieve more and is a vital part of our partnership with parents. Please check your child's schoolbag for communication about home learning and specific tasks they have been asked to research or complete at home.

The Curriculum

Organisation of Classes

The following guidelines set by Scottish Government apply.

- P1- maximum 25
- P2&3- maximum 30
- P4-7- maximum 33
- Composite - maximum 25

Composite classes have pupils from more than one stage.

The drivers behind our curriculum are:-

- Raising attainment
- The needs of the community
- Learning for sustainability
- Creativity
- High Expectations and aspiration

We designed our curriculum with the Child at the centre, and encompassed this with our Vision and Values, the 4 Capacities of the Curriculum¹, the 7 Principles of Curriculum Design² and the 4 Contexts for Learning³. Through the experiences we provide at Pollokshields Primary School we want our children to become global citizens who are solution focused and have positive attitudes towards challenge and learning.

¹ Successful Learners, Confident Individuals, Responsible Citizens and Effective Contributors. ² Challenge & Enjoyment, Breadth, Depth, Progression, Coherence Relevance, Personalisation and Choice. ³Life & Ethos, IDL, Curricular Areas, Opportunities for Personal Achievement.

Curriculum for Excellence 3-18

Curriculum for Excellence (Cfe) raises standards of learning and teaching and aims to prepare children with the knowledge and skills needed in a fast changing world. As part of Cfe, all children from pre-school to the end of S3 receive a rounded education known as a Broad General Education (BGE). Cfe is about bringing real life into the classroom and taking lessons beyond it. It focuses on eight curriculum areas to provide children with a broad general education:-

Expressive Arts	Health & Wellbeing	Languages	Mathematics
Religious & Moral	Sciences	Social Studies	Technologies

Progress in learning is indicated through curriculum levels as detailed below.

Level	Stage
Early	The pre-school years and P1 or later
First	To the end of P4, but earlier or later for some
Second	To the end of P7, but earlier or later for some
Third & Fourth	S1-S3, but earlier for some

Health and wellbeing: Learning in health and wellbeing ensures that children develop the knowledge, understanding and skills they need now and in the future to help them with their physical, emotional and social wellbeing.

Languages: Knowing other languages and understanding other cultures is a 21st century skill set for students as they prepare to live and work in a global society.

Mathematics: Maths equips our children with the skills needed to interpret and analyse information, simplify and solve problems, assess risk and make informed decisions.

Science: Science and its practical application in healthcare and industry is central to our economic future, for our health and wellbeing as individuals and as a society.

Social Studies: Through social studies, children develop their understanding of the world by learning about other people, and places both past and present, alongside societies, their beliefs and values.

Expressive arts: The inspiration and power of the arts play a vital role in enabling our children to enhance their creative talent and develop their artistic skills.

Religious and moral education: Religious and moral education includes learning about Christianity, Islam and other world religions, and supports the development of beliefs and values.

Technologies: The range of subjects in technical education has changed significantly over the last two decades and now includes craft, design, engineering and graphics.

There will be opportunities throughout the year to learn more about aspects of the curriculum and parents/carers will be consulted about significant changes if appropriate.

Religious Observance

In Pollokshields we do not observe any religion but learn about and respect all. We focus on 4 key religions and have progressive pathways for each, where classes spend a week learning about Christianity, Islam, Sikhism or Hinduism before key festivals. Children from religions other than Christianity are permitted to be absent from school on up to 3 occasions in any 1 school session in order to celebrate recognised religious events.



School Improvement

On an annual basis, you will receive a copy of our Standards and Quality report. The Standards and Quality report highlights progress in key curricular areas such as literacy, numeracy and health & wellbeing. Our priorities for improvement are detailed in our School Improvement Plan which is discussed with our Parent Council. Any parent or carer seeking a copy of the plan can contact the school office or check out our website.

Promoting Positive Behaviour

Children's Rights, as outlined in the UNCRC (United Nations Convention on the Rights of the Child) are fundamental to our school ethos. In Pollokshields the first 2 weeks of every new school year, children and teachers build a positive ethos that demonstrates care, respect and responsibility for all by creating class charters. Parents are asked to co-operate with the school in encouraging a sense of responsibility and good behaviour in their children in line with the articles of the UNCRC.

The highest standards of behaviour are expected from all our pupils and adhering to class charters is recognised and celebrated through, awards/certificates at assemblies and Friday's reward play. Where this is not the case, a variety of sanctions and restorative approaches are used.

Support for Pupils

The school has a duty to ensure that all pupils have equal access to the curriculum, with appropriate support for their needs if required. This applies to the content of lessons, teaching strategies and minor adaptations to the school environment. There are a wide range of factors which may act as a barrier to learning. We are committed to working closely with parents and carers to ensure that they are fully involved in any decisions about support for their children's needs. Any parent/carer seeking further advice regarding this policy should contact the Headteacher in the first instance.

Further information relating to additional support needs is available on the Glasgow City Council website at <https://www.glasgow.gov.uk/index.aspx?articleid=18941>

Assessment & Reporting

All children are assessed formally and informally throughout the year. This allows children and their teachers to identify their strengths and areas for improvement. A variety of assessment methods are used to enable staff to pass on information to parents about the progress of their child. Assessment records are kept by the class teacher and form the basis of discussion at Parents' Evenings. An annual report is sent home towards the end of each school year. However if you have any concerns about your child's progress throughout the year please do not hesitate to contact the school.

Enrolment

Prospective parents are encouraged to visit the school to learn about our curriculum rationale, values and rights ethos. Contact the school office staff arrange a suitable time for a group or individual appointment.



Registration of Primary 1 children takes place in November and is advertised widely in local press etc. Enrolment is now conducted online – see the link below

<https://www.glasgow.gov.uk/index.aspx?articleid=18426>

Families living outwith the catchment area are welcome to make a placing request to attend a different Glasgow School but must enrol their child online as a first step.

Transport

The education authority has a policy of providing free transport to all pupils who live outwith a certain radius from their local school by the recognised shortest walking route. This means that the provision of transport could be reviewed at any time. Parents/Carers who consider they are eligible can apply online at:-



<https://www.glasgow.gov.uk/index.aspx?articleid=17882>

Emergency Contact Information

At the start of each school session, parents will be issued with the annual data check form. Please ensure that this is completed and returned to the school. It is also important that you let us know if there are changes to your telephone number(s) or to those of your emergency contacts throughout the year.

Data Protection – use of information about children and parents/carers

We collect information about children attending school (and also about parents/carers, emergency contacts etc. provided in the annual data check) to allow us to carry out the Council's functions as the education authority for the City of Glasgow. This may sometimes involve releasing personal information to other agencies and other parts of the Council, particularly in relation to child protection issues or criminal investigations, and it may also be used for research purposes (see the link below for more details regarding this).

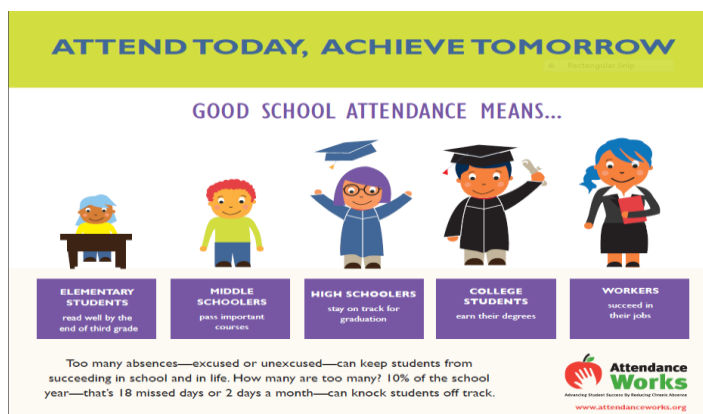
Information held by the school is, in legal terms, processed by Glasgow City Council. The Council is registered as a data controller under the Data Protection Act 2018 and **all personal data is treated as confidential** and used only in accordance with the Data Protection Act, the General Data Protection Regulations, and the Information Use and Privacy Policy approved by the City Council. For more information on how we use personal information, or to see a copy of the Information Use and Privacy Policy, see:-

<https://www.glasgow.gov.uk/index.aspx?articleid=18010>

Education specific privacy statements can be accessed at:-

<https://www.glasgow.gov.uk/index.aspx?articleid=22069> .

Pupil Absence



Good attendance is encouraged and rewarded in Pollokshields. If your child is going to be absent, please -

- phone the school office on **423-1363**, as early as possible on the 1st day of absence or
- phone the Pupil Absence Reporting Line on 0141 **287 0039**. The line is open between 08.00-15.30 Monday to Friday.
- Alternatively use the online form on the Glasgow City Council website:
<https://www.glasgow.gov.uk/index.aspx?articleid=18832>

If a pupil is going to be absent for some time, it would be helpful to know at the earliest opportunity. The school uses daily text messaging to inform parents and carers of absence if no contact is made. **All unexplained absences are investigated by the school and appropriate action will be taken.**

Attendance is crucial to attainment! Please book your holidays, especially extended ones so that they coincide with the school holidays.

Appointments during school hours

If your child has an **unavoidable appointment**, please give them a letter for their class teacher and then collect them from the school office at the specified time.



Medical & Healthcare

The school nurse visits at various times during the year for routine health checks, vaccinations and medical examinations. Parents are kept informed by letter.

If a child becomes ill during the course of the school day, he/she may require to be sent home. Please ensure that you keep the school informed of all contact details including emergency contacts, especially if carers are unavailable during school hours.

Parents should inform the school of any medical requirements relating to their child. ***If a child requires medication during the school day, parents must complete the appropriate medical form.*** This is available on request from the school office.

Emergencies

We make every effort to maintain a full educational service, but on some occasions circumstances arise which lead to disruption. Schools may be affected by, for example, severe weather, temporary interruption of transport, power failures or difficulties of fuel supply. In such cases, we shall do all we can to let you know about the details of our closure or re-opening by using letters, texts and the local media etc. *As a working mother I know this can be a nuisance and apologise in advance for any stress caused by these disruptions which are outwith our control.*

Transfer from Primary to Secondary School

Young people normally transfer to Secondary School between the ages of 11 ½ and 12 ½, so that they will have the opportunity to complete at least 4 years of secondary education. Parents and carers will be informed of Secondary school arrangements no later than December of P7.

Children from our school normally transfer to **Bellahouston Academy** (details below).

Bellahouston Academy

30 Gower Terrace, Glasgow, G41 5QF

Category: Non-Denominational School

Head Teacher: Ian Anderson

Phone: 0141 **582 0030**

Fax: 0141 582 0031

E-mail: headteacher@bellahoustonacademy.glasgow.sch.uk

Website: <http://www.bellahoustonacademy.glasgow.sch.uk/>

Bellahouston Secondary School is the catchment secondary school and Secondary School staff from this school work with our pupils from Primary 6 onward to prepare them for the transfer to secondary school. However some families make a placing request to attend a different Glasgow Secondary School, the most common one being **Shawlands Academy**.

School Uniform



The school uniform is:

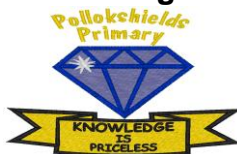
- White or blue shirt/polo shirt
- School tie
- Maroon cardigan, jumper or tank top
- Grey/black trousers or pinafore
- Grey/black/tartan skirt
- Blue checked summer dress



Our uniform was agreed in consultation with pupils and parents. It is expected that all children attending Pollokshields Primary School will adhere to this dress code. Sweatshirts, cardigans, polo shirts, jackets, school bags and ties with the school logo are available for purchase online from **Border Embroideries** found using the following:-

<https://www.border-embroideries.co.uk>

We are proud to say that our logo was designed by a former pupil while in P7.



Please label all items of clothing in case your child misplaces it. Thanks this will save a lot of time for you and the staff.

PE Kit



It is important that pupils come prepared for PE which requires appropriate clothing of a t-shirt and shorts/leggings. Indoor plimsolls or trainers must be worn in the gym. **All jewellery should be removed to ensure the safety of all pupils participating.** Could parents please either remove their child's earrings on gym days if they are unable to do so themselves or stick plasters over their earlobes as a protective measure. Thanks.

Pupils who are not participating in PE must have a note or a medical certificate. Pupils who are unable to participate in practical PE should still bring their kit to allow them to assist in the lesson by refereeing, keeping scores or assisting with the distribution of equipment. This ensures that they are still able to participate in some way in the work of the class and do not miss out on the knowledge and understanding of the course.

Clothing & Footwear Grants

Parents/Carers receiving **Income Support, Job Seekers Allowance** (Income Based), **Working Tax Credit** (check link below for thresholds), **Housing Benefit, Council Tax Benefit or Universal Credit** (check link below for thresholds) will normally be **entitled to monetary grants for footwear and clothing for their children.** Information and application forms may be obtained from schools and at-

<https://www.glasgow.gov.uk/index.aspx?articleid=17885>



Please note- Forms of unacceptable dress in school are items of clothing which:

- Potentially encourage factions (such as football colours)
- Could cause offence (such as anti-religious symbolism or political slogans)
- Could cause health and safety difficulties (such as loose fitting clothing, jewellery)
- Could cause damage to flooring
- Carry advertising particularly for alcohol or tobacco
- Could be used to inflict damage on other pupil



School meals

Cordia provides a lunch service which offers a variety of meals and snacks. **All children in P1-4 are entitled to a free school meal.** Medical, vegetarian or vegan diets for children can be provided. Further information can be found here:-

[http://www.fuelzoneprimary.co.uk/UserFiles/files/Medical Diet Leaflet%20-%20June%202017%20WEB.pdf](http://www.fuelzoneprimary.co.uk/UserFiles/files/Medical%20Diet%20Leaflet%20-%20June%202017%20WEB.pdf).



Please inform the Headteacher when enrolling of special dietary requirements. **All of our meat is halal unless otherwise requested.** Menus will be sent home in school bags at the start of term and can be viewed on the link below:-

Fuel Zone website www.fuelzoneprimary.co.uk

Children who prefer to bring packed lunches will be accommodated in the gym hall or can sit outside at the picnic benches in the warmer weather.



Fee Meal Entitlement

Children of parents/carers receiving Income Support, income-based Job Seekers Allowance, Working Tax Credit, Child Tax Credit only, Universal Credit (check link below for all the thresholds) and income-related Employment and Support Allowance are entitled to a free midday meal. Information and application forms for free school meals can be found at-

<https://www.glasgow.gov.uk/index.aspx?articleid=17885>

Comments & Complaints

In Pollokshields Primary School we aim to have positive relationships across our school community. However, if you have a comment or complaint about any aspect of school life, please contact the Headteacher in the first instance. If not satisfied Glasgow City Council complaints procedures are available at –

<https://www.glasgow.gov.uk/index.aspx?articleid=16133>

Customer Care Team
Customer & Business Services
Glasgow City Council
City Chambers
Glasgow G2 1DU
Tel: 0141 287 0900
e-mail: customercare@glasgow.gov.uk or
education.customercare@glasgow.gov.uk

Glasgow City Council
Education Services
City Chambers East
40 John Street
Glasgow G1 1JL
Tel: 0141 287 2000
www.glasgow.gov.uk

Parent Council

We have a very active and supportive Parent Council that represents the views of all parents at Pollokshields Primary. All parents are welcome to attend Parent Council meetings and can become members at the AGM in September. Parent Council minutes are available on the Parent Council page of the school website/school app and on request from the school office.

Useful Contacts

Parentzone Scotland is a unique website for parents and carers in Scotland, from early years to beyond school. The website provides up-to-date information about learning in Scotland, and practical advice and ideas to support children's learning at home in literacy, numeracy, health and wellbeing and science. Information is also available on Parentzone Scotland regarding additional support needs, how parents can get involved in their child's school and education. Furthermore, the website has details about schools including performance data for school leavers from S4-S6; and links to the national and local authority and school level data on the achievement of Curriculum for Excellence levels. Parentzone Scotland can be accessed at-

<https://education.gov.scot/parentzone>.

Connect

Connect is a national organisation that provides advice and resources for parents and carers. www.connect.scot

Enquire Scotland

Enquire is a national advice service for families with additional support needs. www.enquire.org.uk

Useful websites

Education Scotland www.education.gov.scot

National Parent Forum of Scotland www.npfs.org.uk

Information on the Glasgow City Councils' Parental Involvement Strategy can also be found at <https://www.glasgow.gov.uk/index.aspx?articleid=17870>



Nurture

Pollokshields has a Nurture Class and staff who are trained in attachment and nurture, which has deepened their understanding of child development and enhanced effective practice. Staff respond to the needs of all children in a consistent and caring way and seek to ensure children and families feel they belong, are listened to and are valued by embedding the principles of nurture across the school. Through our nurturing approach we build resilience, and help to reduce the impact of adversity by creating safe environments which allow our children to flourish. We raise attainment through promoting positive mental health and wellbeing.

