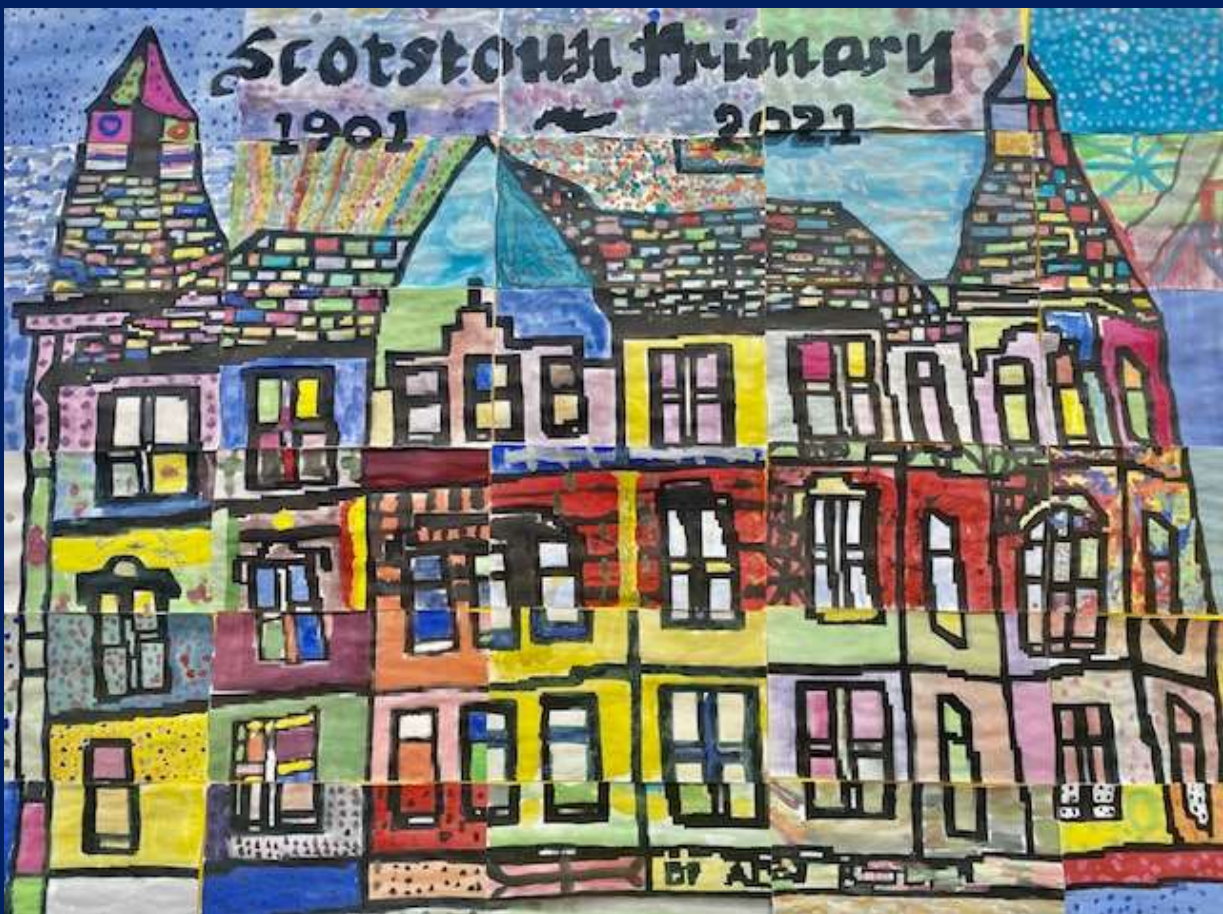




# Welcome To Scotstoun Primary School



Updated October 2023



## Contents Page

Contents	Page Number
Welcome	2
Vision Values and Purpose	3
Contact Information / School background / Present Roll /Organisation of classes	4
School Staff	5
School holidays / Pupil Absence	6
Medical and Health Care	7
School Uniform & PE kit	8
Clothing Grant & Footwear Grant / Breakfast Club / Transport	9
Transfer from Primary to Secondary	10
Communication with Parents/Carers	11
Emergency Contact Information/Data Protection/Appointments during school hours/ Complaints	12-13
Curriculum	14-15
Wider Achievement/Celebrating Achievement/Assessment and Reporting/Pupil Profiles	16
GIRFEC/Support for Pupils/Nurturing City/ Promoting Positive Behaviour School Improvement	17-18
Home Learning/Parent Council / Pupil Voice / Committees	19
House System/Extra Curricular Activities	20
MACS/Useful addresses	21



A very warm welcome to Scotstoun Primary School and our school handbook.

This handbook will, I hope, help you to understand more about our school and provide a range of information which you will find helpful.

At Scotstoun Primary we aim to ensure that every child is valued and supported in achieving their full potential so that the whole person is developed. We appreciate that this task requires that we work in close partnership with others and hope that parent and carers and their families enter into a partnership with the school in order that, together, we provide a happy, safe and secure educational environment for all our pupils. We would encourage you to become involved with the school and the various activities, events and meetings that will take place throughout the session. This is now your school and we hope to develop strong links throughout the duration of your child's time with us.

I hope that this handbook will help to inform you about school life at Scotstoun, and about how we can work together to provide the best possible learning experiences for your child.

Should you wish to discuss your child's progress or have any other concerns, please do not hesitate to contact the school immediately. Any concerns you may have will be dealt with promptly and in a caring and sensitive way.

I hope your child will be happy with us and that they will enjoy the many opportunities for learning that we offer through the wide range of activities and experiences of our school.

With kindest regards,

*Emma McGill*

**Emma McGill**  
**Head Teacher**





### **Vision**

At Scotstoun Primary School, we want a nurturing community where every child feels like they belong, kindness flourishes, creativity thrives, respect is promoted and learning is a lifelong passion.

We want Scotstoun Primary to be a special place where every child feels like they are part of a big family, where we all care for and support each other.

Kindness is something we value in every interaction, and we believe in being nice and helpful to one another. When we are kind, it makes us and others feel happy.

We recognise the creativity in every child and encourage them to use their imagination. Through a variety of opportunities, we promote open mindedness and creativity fostering a love for learning.

Respect is important to us. We treat everyone with fairness and dignity no matter how different we may be. We listen to each other, understand different points of view creating an atmosphere of mutual respect among children, staff, our families and the wider community.

### **Values at Scotstoun Primary School**



### **Purpose**

As a primary school our ultimate goal is to instil a lifelong love for learning in our children. We believe that education is a journey of discovery. We explore new topics, discover fascinating things and develop skills which will help us throughout our life.

**Contact Details:**

21 Duncan Avenue  
Glasgow  
G14 9HN

Phone: 0141 959 3247

Twitter: @scotstoun

Email: [headteacher@scotstoun-pri.glasgow.sch.uk](mailto:headteacher@scotstoun-pri.glasgow.sch.uk)

Website: [www.scotstoun-pri.glasgow.sch.uk](http://www.scotstoun-pri.glasgow.sch.uk)

Pupil Absence Line: 0141 287 0039

**School Background**

Scotstoun Primary School is a primary school built by the Renfrew Landward School Board in 1905 on Earlbank Avenue. The building differs from those built by the Glasgow School Board in many respects, notably in the inclusion of its distinctive towers. Scotstoun remained outwith the city's boundaries until 1926, when it was annexed to provide land for Glasgow Corporation's planned new housing estates.

May 2021 saw the completion of five new classrooms in the school extension and a new multi-use hall. This is a fantastic learning space which the children and adults who use the space in the school are thoroughly enjoying. In September 2021 we were able to access the multi-use games area (MUGA) around the school allowing us a great space for sport and play outside.

**Organisation of Classes**

Our roll this year is 433 children. The total roll which can be accommodated is 495. The working capacity may vary dependent upon the number of pupils at each stage and the way the classes are organised. This session we have sixteen classes from P1-P7. Most classes are made up of single year groups whilst others are composite classes. Composite classes have pupils from more than one stage. More information regarding composite classes is available on request.

The following guidelines set by Scottish government apply

P1	maximum 25
P2 & 3	maximum 30
P4 – 7	maximum 33
Composite classes	maximum 25

**School Hours**

Day begins:	8.45am (Breakfast Club from 7.45am)
Interval Time:	10.15am
Lunch Time:	12.00pm to 1.00pm
Day ends:	3.00pm





## School Staff

A full list is available on the school website and parents/carers will be updated on any changes as required.

## Senior Leadership Team



Mrs Emma McGill  
*Head Teacher*



Mrs Alison Coats  
*Depute Head Teacher  
Primary 1-3*



Mr Kevin Gallagher  
*Depute Head Teacher  
Primary 4-7*



Mrs Tanya Kissack  
*Principal Teacher*



Mrs Louise McKinnon  
*Principal Teacher*



### **School Holidays**

Details of holiday dates are available on the Glasgow City Council website:

[www.glasgow.gov.uk/indexaspex/artcleid=9418](http://www.glasgow.gov.uk/indexaspex/artcleid=9418)

### **Information in Emergencies**

We make every effort to maintain a full educational service, but on some occasions, circumstances arise which lead to disruption. Schools may be affected by, for example, severe weather conditions, temporary interruption of transport, power failures or difficulties with fuel supply. In such cases we will do all we can to let you know about details of closure or re-opening. We shall keep you in touch by using texts, Twitter, school website, letters, notices in local shops and community centres, announcements in local places of worship and announcements in the press or local radio.

### **Pupil Absence**

Within Scotstoun Primary School good attendance is encouraged at all times and children are rewarded accordingly. Parents/carers do not have an automatic right to take their child out of school without permission during term-time. The Head Teacher can only authorise time off during term time in exceptional circumstances.

Exceptional circumstances include -:

- Short term parental placement abroad
- Family returning to its country of origin for family reasons
- The period immediately after an illness or accident
- A period of serious or critical illness of a close family relative
- A domestic crisis which causes serious disruption to the family home, causing temporary relocation

Parents are asked to contact the Pupil Absence Reporting Line if their child is going to be absent (0141 287 0039) . This should be done before 9.30 on the first day of absence. If the child is going to be absent for some time, it would be helpful to know at the earliest opportunity. The school uses daily text messaging to inform parents of their child's absence if no contact is made. All unexplained absence is investigated by the school and appropriate action taken.

Please phone the Pupil Absence Reporting Line to report the following absences:

- Sickness absence: if the absence lasts more than one day, parents and carers are required to call on subsequent days to provide an update. A letter should be provided to the school when the child returns from their absence.

- Medical or dental appointments: Parents and carers should call the PARL to report absences for medical or dental appointments. The school requires a letter or appointment card as evidence of the appointment to ensure permission is given to be absent from class.

Please phone the school directly to report the following absences:



To make sure you receive the right support you require, parents and carers should still contact the school directly to report absences of a sensitive or personal nature, for example:

- Bereavement
- Serious illness, for example, an absence which is going to last more than one week
- Injury, for example, broken limb
- Contagious diseases or illness

The pupil absence service is provided by a dedicated team of experienced education support staff. The information you provide to the team is updated in the school's system when you call, so that we are immediately aware of all absence information.

### Medical and Health Care

During their time at Scotstoun Primary School the School Health Service will make checks on children's vision, hearing and dental care.

Where a child has an accident requiring medical attention or takes ill at school we make every effort to get in touch with parents or an emergency contact. Although we have a trained First Aider, we have no medical or nursing personnel in school and if unable to contact parents, where medical attention is required, we would, if necessary take the child to hospital.

Parents should inform the school of any problem that may affect the child in school e.g. asthma, heart trouble, diabetes etc. When a child takes ill or has an accident we often have to contact parents quickly. It is important that the school has the correct information regarding emergency contacts etc.

If your child requires any medication to be administered parents must complete 'Administration of Medication Form' this can be collected at our school office.







## School Uniform

At Scotstoun we have an agreed school uniform which consists of the following:-

- Yellow polo shirt
- Navy blue sweatshirt
- Navy blue cardigan
- Navy trousers or skirt or shorts or blue summer dress
- For gym we have house colour T Shirts - blue (Birds), yellow (Bells), green (Trees) and red (Fish) and navy blue shorts.



Scotstoun Primary uniform can be purchased directly from the school by contacting the school on 0141 959 3247.

***Please label all belongings with your child's name.***

It is expected that all children attending Scotstoun Primary School will adhere to this dress code.

## PE Kit

It is important that children come prepared to learn and for PE this requires appropriate clothing. Please have children remove all jewellery. If your child is not participating in PE they should bring a note for their teacher.

There are forms of dress that are unacceptable in school. Such as items of clothing which:

- Potentially encourage factions (such as football colours)
- Could cause offence (such as anti-religious symbolism or political slogans)
- Could cause health and safety difficulties (such as loose-fitting clothing, jewellery, earrings must be removed).
- Could cause damage to flooring
- Carry advertising particularly for alcohol or tobacco
- Could be used to inflict damage on other children



### **Clothing and Footwear Grants**

Parents/carers receiving Income Support, Job Seekers Allowance (Income Based), Working Tax Credit (with a total annual income of less than £15,050\*), Housing Benefit or Council Tax benefit will normally be entitled to monetary grants for footwear and clothing for their child or young person. Information and application forms may be obtained from schools and at [www.glasgow.gov.uk/index.aspx/artcleid=8629](http://www.glasgow.gov.uk/index.aspx/artcleid=8629)

### **School Meals**



Our school provides a lunch service which offers a variety of meals and snacks including vegetarian and Halal options. Medical diets for children can be provided.

Children who prefer to bring packed lunches can eat their lunch in the dining hall or outside – weather permitting.

All children in P1-5 are entitled to a free school meal. This does not mean they are entitled to a free space at breakfast club.

Children and young people of parents/carers receiving Income Support, income-based Job Seekers Allowance, Working Tax Credit (check link below for thresholds), Child Tax Credit only (check link below for thresholds), Universal Credit (check link below for thresholds) and income-related Employment and Support Allowance are entitled to a free midday meal. Information and application forms for free school meals may be obtained at <https://www.glasgow.gov.uk/index.aspx?articleid=17885>



### **Breakfast Club**

All children are able to access a breakfast (free for those eligible for school meals and at a cost of £2 for the first child and thereafter £1 for any additional child in the family) in the school dining hall from 7.45am until 8.45am. If you plan to send your child/children to breakfast club, you should inform the staff of any medical dietary requirements. At 8.40am (weather permitting) the children go out into the playground where they are supervised by school staff until the bell goes at 8.45am.

### **Transport**

The education authority has a policy of providing free transport to all children and young people who live outwith a certain radius from their local school by the recognised shortest walking route. This policy is more generous than the law requires. This means that the provision of transport could be reviewed at any time. Parents/carers who consider they are eligible should obtain an application form from the school at [www.glasgow.gov.uk/index.aspx/artcleid=8629](http://www.glasgow.gov.uk/index.aspx/artcleid=8629)



### **Transfer from Primary School to Secondary School**

Children and young people are normally transferred between the ages of 11 ½ and 12 ½ so that they will have the opportunity to complete at least 4 years of secondary education. Parents/carers will be informed of the arrangements no later than December of the year preceding the date of transfer at the start of the session. Our pupils would normally attend:-

Knightswood Secondary School  
60 Knightswood Road, Glasgow G13 2XD

Tel: 0141 582 0160

Website : [www.knightswood-sec.glasgow.sch.uk](http://www.knightswood-sec.glasgow.sch.uk)



Knightswood Secondary school staff work with our children from Primary 6 onwards to prepare them for the transfer to secondary school.



## **Communication with Parents and Carers**

At Scotstoun Primary School we use a variety of ways to keep in touch. We regularly sample views of our stakeholders about how they find we communicate and look for ways we can improve it. Please feel free to contact the Head Teacher at any time on [headteacher@scotstoun-pri.glasgow.sch.uk](mailto:headteacher@scotstoun-pri.glasgow.sch.uk).

Some of the ways we keep in touch are:

*Open Door Policy* – both the Headteacher and Depute Headteachers are available for all parents/carers at any time providing they are not teaching or in another meeting. Please email or phone for an appointment.

*Meet the Teacher Event* – families are invited to an information event early in the new term to meet their child's teacher, see their learning environment and hear about what the year ahead holds.

*Parents' Nights* – twice each year (usually October and March) we have a Parents' Night when parents are given an appointment time where they can discuss their child's progress with the class teacher and view their child's work.

*Class Newsletters* – these will be sent termly to keep parents up to date with the learning planned for the term ahead.

*Newsletters* – will be sent out on a regular basis to keep parents informed about the work of the school. These are also available on our website.

*Letters* – further information, which requires a response, may be sent out in letter form.

*School website* – contains a great deal of information about the school.

*Text messaging/email* – you may also receive text reminders about events/school closures etc.

*Meetings* – parents/carers are welcome in the school to discuss any aspect of their child's development and progress. To avoid disappointment, it is advisable to make an appointment.

*Twitter* – follow the school on @scotstoun and keep up to date with events going on in the school.

*Seesaw* – we use the Seesaw app across the school to allow children to share their learning at home and to give parents and carers an insight into their child's classroom.

We look for any opportunity to invite parents and carers to other events throughout the school year e.g. workshops, information evenings, class performances, religious and other assemblies. The school newsletter will keep you informed.



### **Emergency Contact Information**

At the start of each school session, parents will be issued with the annual data check form. Please ensure that this is completed and returned to the school. It is also important that you let us know if there are changes to your telephone number(s) or to those of your emergency contacts throughout the year.

### **Data Protection – use of information about children and parents/carers**

We collect information about children attending school (and also about parents/carers, emergency contacts etc. provided in the annual data check) to allow us to carry out the Council's functions as the education authority for the City of Glasgow. This may sometimes involve releasing personal information to other agencies and other parts of the Council, particularly in relation to child protection issues or criminal investigations, and it may also be used for research purposes (see the link below for more details regarding this).

Information held by the school is, in legal terms, processed by Glasgow City Council. The Council is registered as a data controller under the Data protection Act 2018 (number Z48716570) and all personal data is treated as confidential and used only in accordance with the data protection Act and the Information use and privacy Policy approved by the City Council. For more information on how we use personal information, or to see a copy of the information Use and privacy Policy, see

[www.glasgow.gov.uk/privacy](http://www.glasgow.gov.uk/privacy)

### **Appointments during school hours**

If your child has an unavoidable appointment, please give them a letter for their class teacher and then collect them from the School Office at the specified time.

### **The School Community**

The school fosters a sense of citizenship through participation in local projects. We are fully involved in local community events and achieve success in local, city and national competitions. We have fostered good links with our feeder nurseries, charity organisations, other schools and old folk's homes. All children are involved in supporting nominated charities throughout the year and are committed to making a difference.



### **Comments and Complaints**

In Scotstoun Primary we aim to have positive relationships across our school community. However, if you have a comment or complaint about any aspect of school life, please contact the Headteacher in the first instance.

Glasgow City Council complaints procedures are available;

[www.glasgow.gov.uk/index.aspx/artcleid=2896](http://www.glasgow.gov.uk/index.aspx/artcleid=2896)

Customer Liaison Unit  
Education Services  
Glasgow City council  
City Chambers east  
40 John Street  
Glasgow G1 1JL





Tel: 0141 287 0900

e-mail: [customercare@glasgow.gov.uk](mailto:customercare@glasgow.gov.uk) or [education.customercare@glasgow.gov.uk](mailto:education.customercare@glasgow.gov.uk)

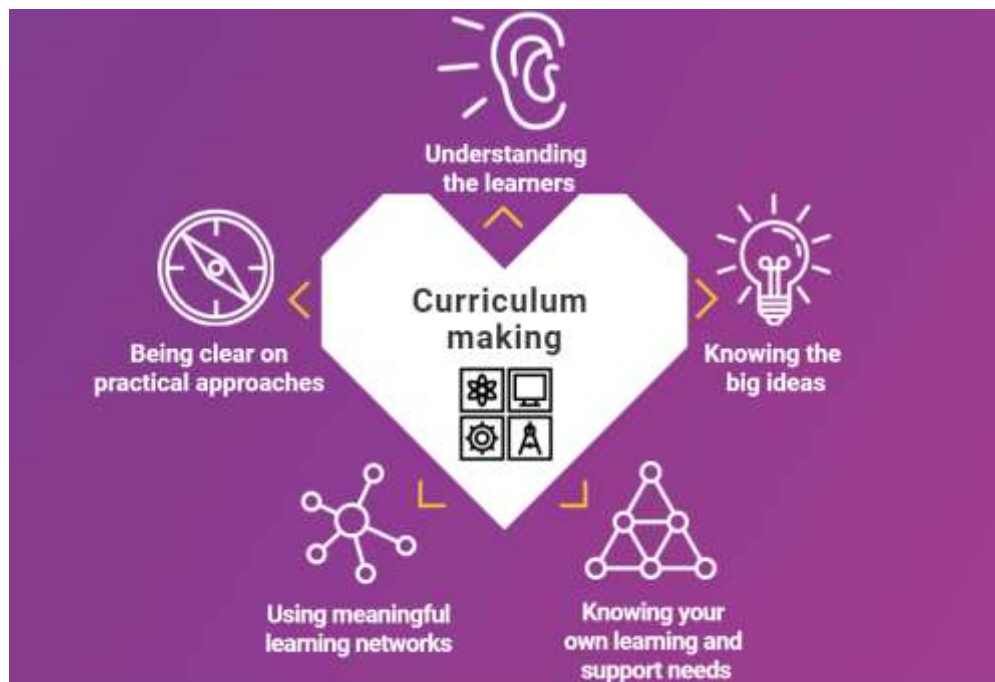
The above website also includes information on data protection and freedom of information.



## Curriculum

### Curriculum for Excellence 3-18

Curriculum for Excellence has been introduced to raise standards of learning and teaching for all 3 to 18 year olds. It aims to help prepare children and young people with the knowledge and skills they need in a fast changing world. As part of Curriculum for Excellence all children from pre-school to the end of S3 will receive a rounded education known as a Broad General Education (BGE).



Curriculum for Excellence is all about bringing real life into the classroom and taking lessons beyond it.

Through the experiences we provide at Scotstoun Primary we want our children to become Successful Learners, Confident Individuals, Responsible Citizens and Effective Contributors. We are committed to providing children with a broad general education and focus on eight curriculum areas. These may be taught across four contexts for learning; in their discrete curriculum strands, as part of an interdisciplinary approach where aspects of several curricular areas are taught within a context, giving opportunities for children to contribute to the ethos and life of the school and opportunities for personal achievement.





Expressive Arts	Health & Wellbeing	Literacy and English	Numeracy and Mathematics
Religious & Moral	Sciences	Social Studies	Technologies

Progress in learning is indicated through curriculum levels as detailed below.

<b>Level</b>	<b>Stage</b>
Early	The pre-school years and P1 or later
First	To the end of P4, but earlier or later for some
Second	To the end of P7, but earlier or later for some
Third & Fourth	S1-S3, but earlier for some

**Expressive arts:** The inspiration and power of the arts play a vital role in enabling our children and young people to enhance their creative talent and develop their artistic skills.

**Health and wellbeing:** Learning in health and wellbeing ensures that children and young people develop the knowledge, understanding and skills which they need now and in the future to help them with their physical, emotional and social wellbeing.

**Science:** Science and its practical application in healthcare and industry is central to our economic future, for our health and wellbeing as individuals and as a society.

**Social Studies:** Through social studies, children and young people develop their understanding of the world by learning about other people and places both past and present, societies, their beliefs and values.

**Religious and moral education:** Religious and moral education includes learning about Christianity, Islam and other world religions, and supports the development of beliefs and values.

**Literacy and English:** Knowing other languages and understanding other cultures is a 21st century skill set for students as they prepare to live and work in a global society.

**Numeracy and Mathematics:** Mathematics equips us with the skills we need to interpret and analyse information, simplify and solve problems, assess risk and make informed decisions.

**Technologies:** The range of subjects in technical education has changed significantly over the last two decades and now includes craft, design, engineering and graphics.

There will be opportunities throughout the year for parents and carers to learn more about aspects of the curriculum and to be consulted about significant changes if appropriate.

**Useful websites**

- [www.curriculumforexcellencescotland.gov.uk](http://www.curriculumforexcellencescotland.gov.uk)
- [www.educationscotland.gov.uk/parentzone/index.asp](http://www.educationscotland.gov.uk/parentzone/index.asp)



### **Wider achievement**

We encourage our children to be successful in the widest sense. We encourage them to participate in as many activities as possible both in and out of school. We provide links to local clubs to allow individuals to develop talents and interests.

### **Celebrating attainment and achievement**

We value the achievements of all in our community and record the highlights in the school newsletters. Certificates are issued during assemblies in recognition of attainment and achievement as children develop as Successful Learners, Effective Contributors, Responsible Citizens and Confident Individuals.

### **Proud Cloud**

All classrooms will have a proud cloud display that will be updated weekly by children with pupils. Once a term, the teacher will choose two from the display to be presented with certificates in a celebration assembly.

### **House point system**

Pupils can be awarded one or two house points from any staff members for displaying positive behaviour of any kind. These are collected by P7 pupils and each term, one house will receive a 'House Treat' for collecting the most points. These points will be displayed in the hall.

### **Spotlight Stars**

All staff will have a star to give to children in their class who they think have shown the focussed value for that half term. The child's name will go on the star, to be collected and displayed in the main hall. Winning children will then get to take part in a treat where they can bring a friend. This will be changed each month.



We have a prizegiving ceremony at the end of the session where children in each class are awarded prizes for progress. We also recognise the outstanding contribution made to the school by awarding three P7 children with the "P7 Cup", "P7 Plate" and the "P7 Art Cup". These are highly valued awards with all staff and senior pupils involved in the choice of recipients.

Each term

### **Assessment & Reporting**

All children are assessed both formally and informally throughout the year as assessment is a continuous process. It is our aim for assessment to be used to:

- 1 Improve the quality of learning and teaching for all pupils.
- 2 Raise standards of individual pupil attainment and achievement.
- 3 Enable a continuum in provision for pupils across the range of stages through primary and into secondary school.
- 4 Enable more effective reporting to parents and pupils.

This allows children and their teachers to identify their strengths and areas for improvement. A variety of assessment methods are used to enable staff to pass on information to parents about the progress of their child. Your child will be assessed in what they write, make, say and do. Assessment records are kept by the class teacher and form the basis of discussion at Parents' Evenings in October and March. An annual report is sent to parents towards the end of each school year.



If you have any concerns about your child's progress do not hesitate to contact the school

### **Pupil Profiles**

Every child leaving primary school in Scotland has their key achievements in school, at home and in the community documented within a P7 profile. The content of the profile is decided by the young person. The profile is a positive record of their achievements and emphasis their strengths. The profile provides a valuable way for learners to share valuable information about their achievements with their parents and teachers in secondary school.

### **Getting it Right for Every Child (GIRFEC)**

The GIRFEC approach is about how staff in all children's services meet their needs by working together where necessary to ensure that children reach their full potential. All agencies use the eight GIRFEC Well Being indicators to monitor and assess pupils. These indicators are:

- Safe/Healthy/Achieving/Nurtured/Active/Respected /Responsible Included

[www.scotland.gov.uk/gettingitright](http://www.scotland.gov.uk/gettingitright)

We use the staged intervention model to support our children and to plan to meet our children's needs. In some cases, we use a Well Being and Assessment planner (WAP) to enabling us to consider all aspects of a child's development; their physical, social, educational, emotional, spiritual and psychological development. We consult at all stages of planning with parents and pupils as this is vital in order to fully support the child.



### **Support for Pupils**

The school has a duty to ensure that all pupils have equal access to the curriculum, with appropriate support for their needs if required. This applies to the content of lessons, teaching strategies and minor adaptations to the school environment. There are a wide range of factors which may act as a barrier to learning. We are committed to working closely with parents and carers to ensure that they are fully involved in any decisions about support for their children's needs.

At Scotstoun Primary we operate a system called staged intervention. This framework ensures that children are given appropriate and planned additional support if required, in





consultation with parents/carers. An ISP (Individual Support Plan) or GSP (Group Support Plan) may be required and this will be evaluated each term.

**Stage 1** – (Class Teacher providing additional support only)

**Stage 2** – (Additional support from staff within school i.e. English as an Additional Language (EAL), ASN, Support for Learning support)

**Stage 3** – (additional support from specialists within education i.e. Educational Psychologist/Speech & Language Therapist)

**Stage 4** – (additional support from agencies outwith education i.e. Social Work)

Further information relating to additional support needs is available on the Glasgow City Council . Click [here](#) to go to the website.

Information on the Glasgow City Councils' Parental Involvement Strategy can also be found at [here](#).

### **Nurturing City**

The Glasgow City Council vision 'towards the nurturing city', puts building positive, trusting relationships at the core of our work. We ensure children, young people and families feel they belong, they are listened to and they are valued by embedding the principles of nurture across our early years, primary and secondary establishments. Staff are trained in attachment and nurture which deepens understanding of child development and enhances effective practice by responding to the needs of all children and young people in a consistent and caring way. Nurture is a universal approach which builds resilience, helping to reduce the impact of adversity. Effective communication and collaboration with parents and carers builds an ethos of partnership working putting the child at the centre, fostering high quality learning contexts.

Each of our nurturing establishments contribute to the development of Glasgow as a nurturing city, creating safe environments which allow our children and young people to flourish by raising attainment and promoting positive mental health and wellbeing.

### **Promoting Positive Behaviour**



Children's Rights as outlined in the UNCRC (United Nations Convention on the Rights of the Child) are fundamental to a good school ethos. Adults in our school will work with children to ensure they are aware of their rights and fully respect the rights of others. Therefore, the approach within Scotstoun Primary School is to build a positive ethos that demonstrates care and respect for all. Positive behaviour is recognised and celebrated which our relationship policy outlines in more detail. Our school operates a system of class charters based on the Rights of the Child to set out expected behaviour. This is celebrated through Together Time and certificates awarded. The class charter is at the heart of creating



responsible citizens and should be referred to frequently throughout the year in order to help promote a positive classroom ethos

The highest standards of behaviour are expected of pupils at all times. Where this is not the case, we use a restorative approach where children are encouraged and supported to reflect on their own behaviour and how this can impact on themselves and others. Parents are asked to co-operate with the school in encouraging a sense of responsibility and good behaviour in their children.

### **School Improvement**

This year our school improvement priorities are focussing on raising attainment and achievement in numeracy and literacy, improving wellbeing for all and developing our curriculum. Our Standards and Quality report on last session's performance along with the School Improvement Plan can be found in the Information section of the Parents' Zone part of the school website.

### **Home Learning**



Continuing to learn at home helps children to achieve more and is a vital part of our partnership with parents. In the early stages parents can help by hearing their children read and talking to their children to promote language skills and numeracy. In the middle and upper stages, work done at home will reflect some of the work done in class. Children should be encouraged to use television, radio, newspapers and magazines as well as books as useful resources in the home.

### **Time allocation for home work (as a guide)**

- P1 P2 15 minutes maximum
- P3 20 minutes maximum
- P4 P7 no more than 25-30 minutes

Homework is provided for various purposes: practice and consolidation of work done in class; preparation for future class work using resources not available in school; encouragement of parental co-operation; and support and practice in private study.

Please check your child's schoolbag for communication about home learning and specific tasks. A copy of our home learning policy is available on request.

### **Parent Council**

We have a very active Parent Council that represents the views of all parents. All parents are welcome to attend Parent Council meetings and can become members at the AGM in October. Parent Council minutes are available on the Parent Council page of the school website and on request from the school office. A list of current members is also available on the website. There are many ways to get involved in the school from being a member of the Parent Council, to helping out at some events on an occasional basis. The PTA, a sub group of the Parent Council, work closely with school staff to fund raise for the school to help subsidise events and school trips. There are a range of events across the school year from bingo to quizzes to welcome BBQs for families to join in with.





**Pupil Voice**

We look to give our children lots of opportunities to get involved in what is going on in the school and to make sure they feel they have a say in how the school is moving forward. Some of the more “formal “ways are:

**Pupil Council**

Our Pupil Council is made up of representatives from each year group, including a representative from the visually impaired children. This is an important group which ensures that the views of pupils are heard. They are consulted on areas such as our curriculum and some aspects of the school improvement plan.

**Sports Council**

This council is responsible for looking at how we can get more active in Scotstoun. We look for ways to improve the playground to encourage the children to be active and healthy.

**Eco Committee**





Our Eco Committee meet to discuss a range of environmental issues, as well as monitoring litter in the playground and ensuring that we continue to Reduce, Reuse and Recycle throughout the school.

**Junior Road Safety Officers**

Our road safety team are committed to ensuring our school community get to and from school safely and in a healthy manner too. They developed the School Travel Plan and keep the road safety message at the fore front of everyone’s mind.

**House System**

Our house system has proven a success. All children and staff in the school are part of a house and the details are below. The children can earn points for their house by demonstrating that they are upholding the school values. The winning house gets a once a term treat and can go forward to win House of the Year in June.

House	Colour	Mascot	Captain	Vice Captain(s)
Bells	Yellow		Beth	Mya
Birds	Blue		Tessa	Spencer & Rosie
Fish	Red		Callum	Helen
Trees	Green		Benjamin	Madison & Ruby



### **Extra-Curricular Activities**

We have a wide range of activities that run between Monday – Thursday to extend the learning experience. These have included football, badminton, choir, basketball, cheerleading, dance and a coding club. Please check your child’s schoolbag as new clubs start at various times throughout the year. These will also be highlighted in the monthly newsletters

### **MACS After School Care Service**

MACS After School Care Service operates within the school. The After School Service offers parents, at cost, supervision of their children from 3.00pm to 6.00pm and also during holidays.



For more information regarding after school care please contact:

**MACS on 0141 887 0002**

### **Useful addresses:**

Education Services  
City Chambers East  
40 John Street  
Glasgow G1 1JL  
Tel: 0141 287 2000  
[www.glasgow.gov.uk](http://www.glasgow.gov.uk)

### **Parentzone Scotland**

This is a unique website for parents and carers in Scotland, from early years to beyond school. The website provides up-to-date information about learning in Scotland, and practical advice and ideas to support children’s learning at home in literacy, numeracy, health and wellbeing and science. Information is also available on Parentzone Scotland regarding additional support needs, how parents can get involved in their child’s school and education. Furthermore, the website has details about schools including performance data for school leavers from S4-S6; and links to the national, and local authority and school level data on the achievement of Curriculum for Excellence levels. Parentzone Scotland can be accessed at <https://education.gov.scot/parentzone>.

### **Connect**

Connect is a national organisation that provides advice and resources for parents and carers.  
[www.connect.scot](http://www.connect.scot)

### **Enquire Scotland**

Enquire is a national advice services for families with additional support needs.  
[www.enquire.org.uk](http://www.enquire.org.uk)