

# Child Poverty: Understanding the Impact of the COVID-19 Pandemic

## Executive Summary







“If you want different results, ***do not do the same things.***”

Albert Einstein

# Child Poverty: Understanding the Impact of the COVID-19 Pandemic

## Executive Summary

### Contents

<b>Our initial brief</b>	1
<b>Updated brief</b>	1
Poverty Thresholds	2
Caveat	2
<b>Key Questions Answered</b>	3
<b>A Focus on Priority Groups</b>	5
<b>Additional support during the COVID-19 pandemic</b>	7

# Child Poverty: Understanding the Impact of the COVID-19 Pandemic

## Executive Summary

### Our initial brief

The Centre for Civic Innovation have been working collaboratively with the Financial Inclusion Team for a substantial period of time. The work undertaken by the CCI led to the development of the Child Poverty in Glasgow Report in 2020.

The Child Poverty in Glasgow report brought together extensive research and detailed data analysis taking a deep dive into the data that the council holds on Housing Benefit and Council Tax Reduction recipients, as well as bringing in data around kinship care and education benefits.



### Updated brief

The Centre for Civic innovation have been asked to investigate the impact that the COVID-19 pandemic has had on Child Poverty in Glasgow.

Due to work undertaken prior to the pandemic Glasgow City Council is in the unique position of being able to see how the number of children living in relative poverty differs to what it was before.

This data research allows Glasgow City Council to view child poverty at a granular household level allowing for the characteristics of those in poverty to be understood.

There are several key questions that have been asked around the COVID-19 pandemic:

How has the COVID-19 pandemic impacted the number of families receiving Housing Benefit or Council Tax Reduction?

- + Households where a member has a disability
- + Households with 3 or more children
- + Households where there is a child under the age of 1
- + Households where there is a child under the age of 5
- + Kinship Care households.



## Poverty Thresholds

The relative poverty thresholds are the amount of money per week that a person needs to receive to no longer be living in relative poverty.

The poverty thresholds are calculated based on 60% of the equivalised UK household median income, which is information provided by the OECD (Organisation for Economic Co-operation and Development) and based on a defined process used by the Scottish Government.

## Caveat

The Housing Benefit and Council Tax Reduction data doesn't have information on every family living in poverty. However, the data that we have provides information on enough families that it can highlight specific problem areas and show that it will likely be an issue for those we don't know about.

However it captures details of 35,540 children in Glasgow.



# Key Questions Answered

## PRE-COVID-19\*



There were **64,650** households living in Glasgow



with **107,775** children



There were **19,804** households receiving HB/CTR



with **36,072** children



There were **13,827** households living in relative poverty



with **25,485** children

**At least 24% of children in Glasgow were living in relative poverty pre-COVID-19**

## MID-COVID-19\*\*



There are **63,855** households living in Glasgow



with **106,745** children



There are **19,650** households receiving HB/CTR



with **35,540** children



There are **15,346** households living in relative poverty



with **27,995** children

**At least 26% of children in Glasgow are living in relative poverty now**



## INSIGHT

**+ 2,510** Children 

**At least 2,510 more children in Glasgow are living in poverty since the beginning of the COVID-19 pandemic.**

**This means there are now at least 27,995 children living in relative poverty in Glasgow.**

\*Pre-Covid data comes from Housing Benefit and Council Tax Reduction data, February 2020

\*\*Mid-Covid data comes from Housing Benefit and Council Tax Reduction data, December 2020

HB/CTR refers to Housing Benefit or Council Tax Reduction



## Employment

### HOUSEHOLDS THAT HAVE AT LEAST ONE ADULT IN EMPLOYMENT

#### PRE-COVID-19



2,514 households with 5,750 children

#### MID-COVID-19



3,194 Households with 6,792 children

### HOUSEHOLDS THAT HAVE NO ADULT IN EMPLOYMENT

#### PRE-COVID-19



11,286 households with 19,735 children

#### MID-COVID-19



12,152 Households with 21,203 children



### INSIGHT

**344**

no longer employed



Investigating the previous child poverty report from before the COVID-19 pandemic, of the 2,514 households that were employed, 344 households no longer have an adult in employment

## A focus on new households

3,143 Households with 5,456 children are now claiming Housing Benefit or Council Tax Reduction that weren't before the COVID-19 pandemic.

+ 87% 2,749 Households with 4,765 children are living below the poverty line.

### New HB/CTR claimants that are below the poverty line spilt by employment status

	Employment	Unemployed	Total
Households	848	1,901	2,749
Children	1,574	3,191	4,765
Depth of Poverty	£77 per week below the poverty line	£136 per week below the poverty line	£121 per week below the poverty line

## A focus on Universal Credit

8,193 Households with 14,528 children are claiming Universal Credit and Housing Benefit or Council Tax Reduction.

+ 92% 7,509 Households with 13,413 children are living below the poverty line.

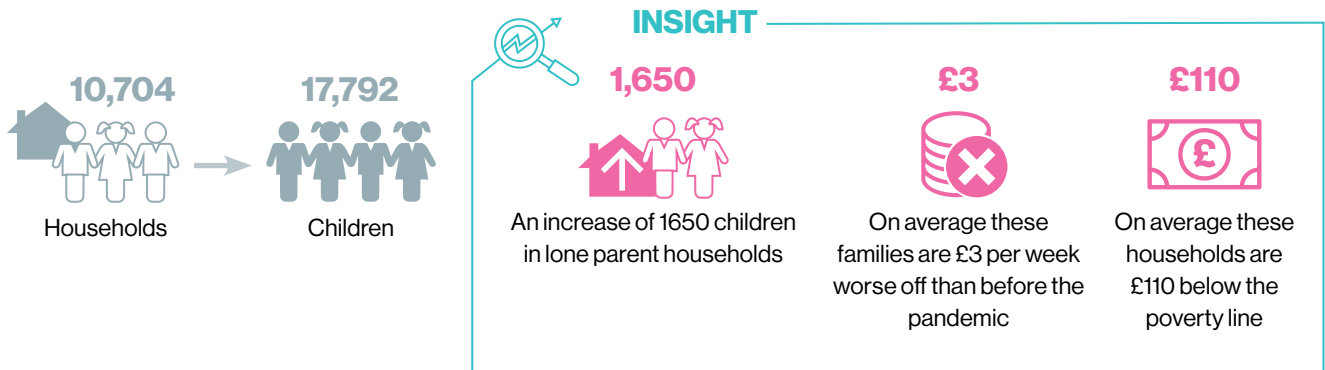
### New HB/CTR claimants that are below the poverty line spilt by employment status

	Employment	Unemployed	Total
Households	848	1,901	2,749
Children	1,574	3,191	4,765
Depth of Poverty	£77 per week below the poverty line	£136 per week below the poverty line	£121 per week below the poverty line

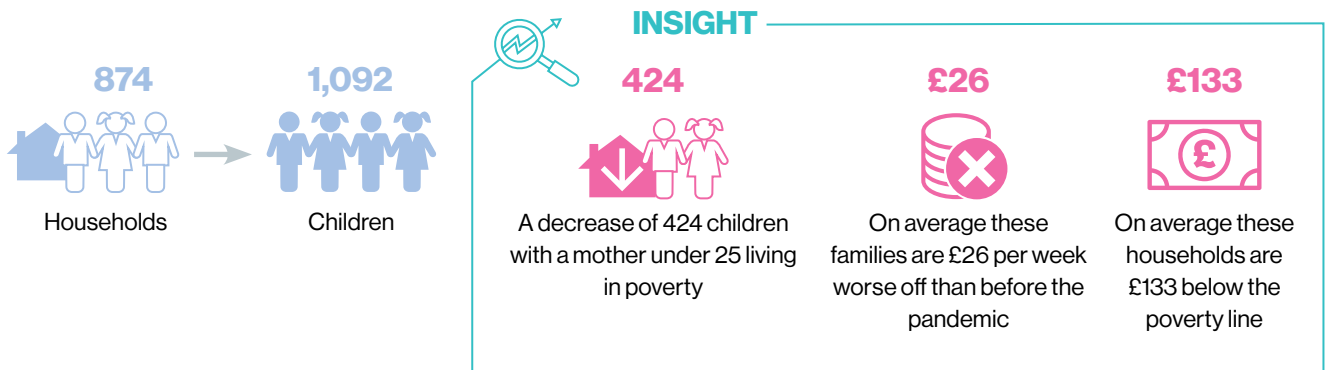
# A Focus on Priority Groups

In the Every child Every chance: Tackling Child Poverty Delivery Plan 2018-2022 from the Scottish Government, several groups are highlighted as being disproportionately affected by Child Poverty. For this reason it is important to look at how the COVID-19 pandemic has impacted these groups.

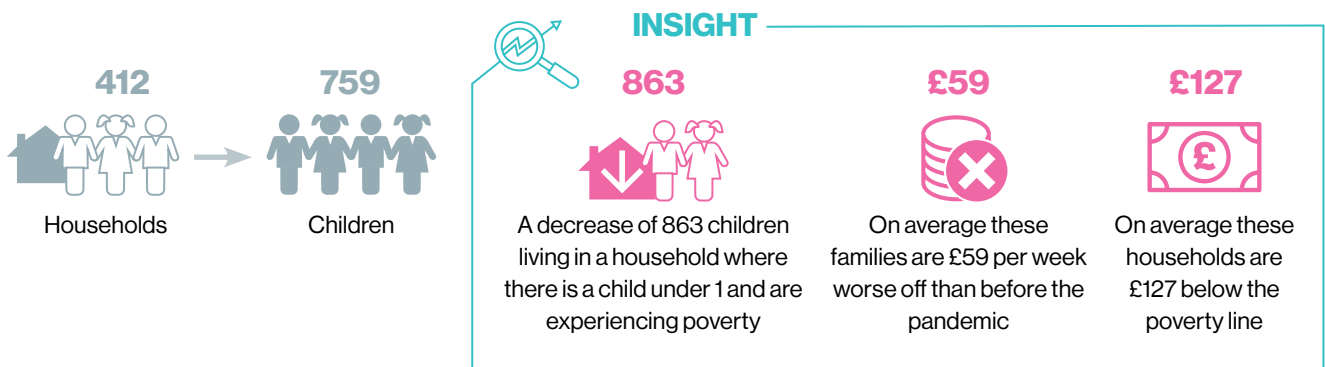
## Lone Parent



## Mothers under 25

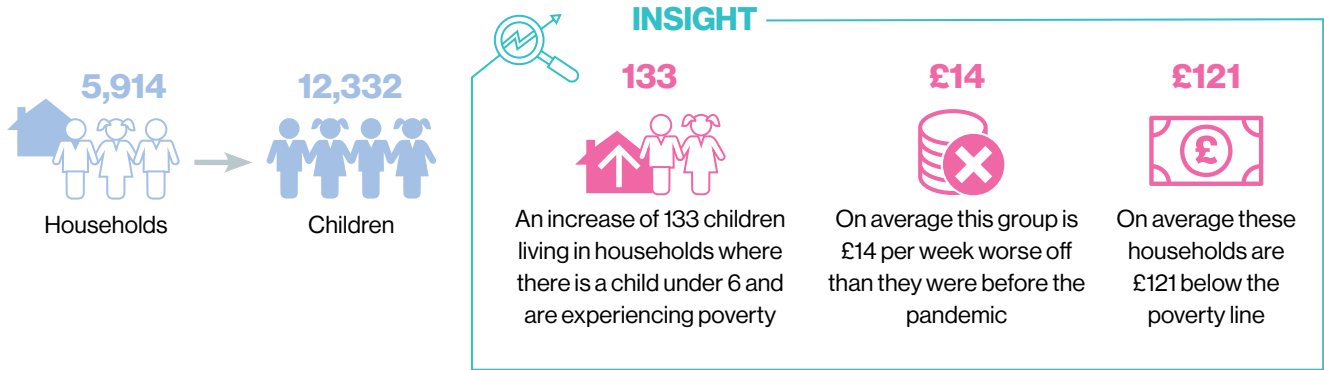


## Child under one

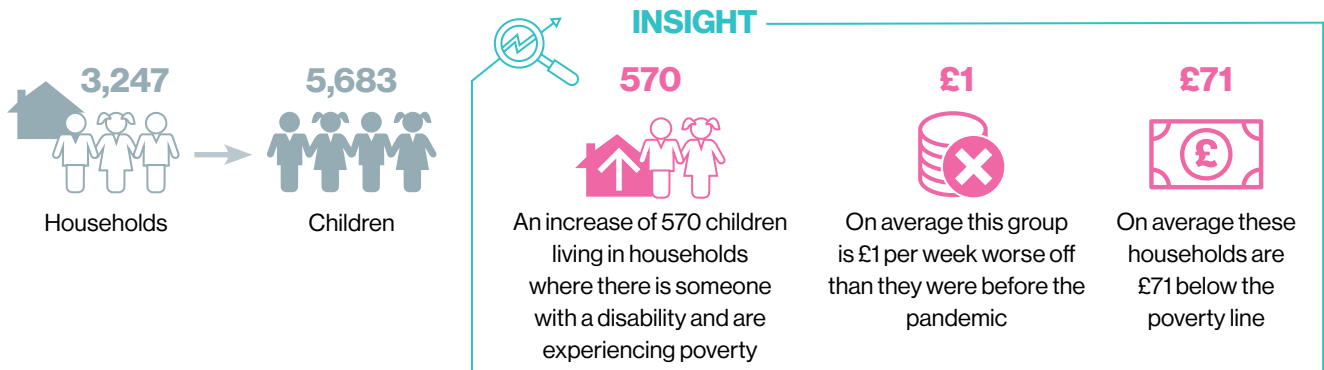




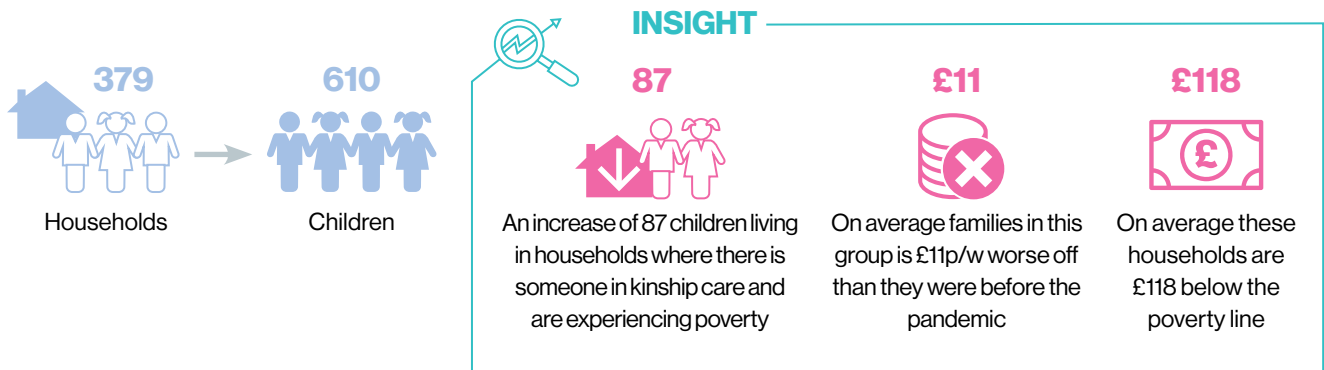
### Children under six



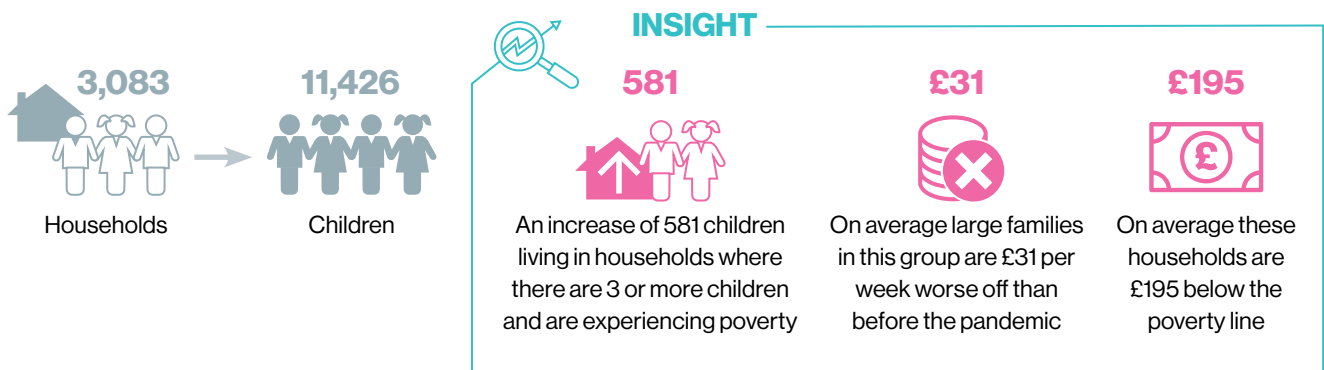
### At least one disability in the household



### Kinship Care



### Large Families (3 or more children in the household)



# Additional support during the COVID-19 pandemic:

- + Glasgow Helps Single Parents
- + Self Isolation Support Grant
- + Scottish Welfare Fund / Discretionary Housing Payment
- + Financial Inclusion Support Officers (FISO)
- + Financial Support - Helping Women to Build a Better Home
- + Shielding Support
- + Christmas Payment
- + Support for Kinship Carers
- + Support for Vulnerable Families
- + Energy Advice & Support
- + First Time Benefit Claimants
- + Financial Support - Helping Women to Build a Better Home
- + No Recourse to Public Funds
- + Christmas Food
- + Food Fund
- + Hot Food
- + Pantries
- + Free School Meals During the Holidays
- + Private Rented Sector Hub
- + Transport/Food Delivery
- + Refrigeration
- + Keeping Warm in Glasgow
- + Technology/Digital Support for Most Vulnerable
- + Volunteering.







**Centre for Civic Innovation**

Glasgow City Council  
Tontine Building  
20 Trongate  
Glasgow G15ES

 [cciglasgow.org](http://cciglasgow.org)

 @CCIGlasgow

 @cciglasgow

