

# Glasgow 2014 Multi-purpose Greenspace Project

## Camlachie consultation report

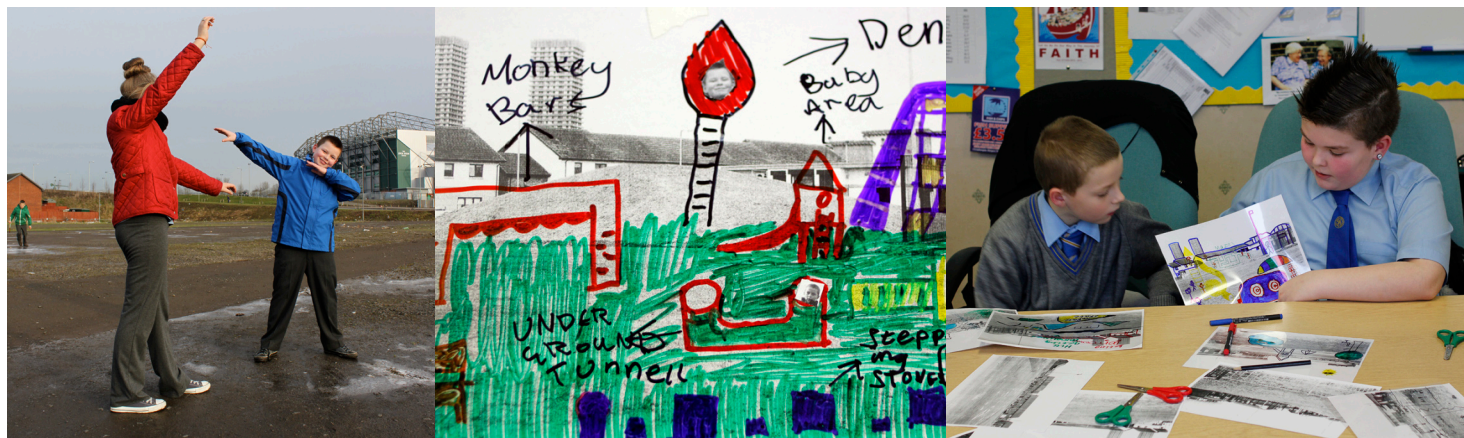
Alex Wilde January 2013

### Introduction

This report is on activities undertaken in January 2013 to creatively engage the residents of Camlachie in generating ideas and discussing priorities, primarily for two proposed multi-purpose greenspace sites in Camlachie (at the Community Centre and on the old Bus Park site).

The main activity was an event at the community centre on the 25th of January. This was preceded by a workshop with the primary school, discussion with the youth group and a projection event on Sunday 20th January.

The main group involved in the consultation has been children and young people.

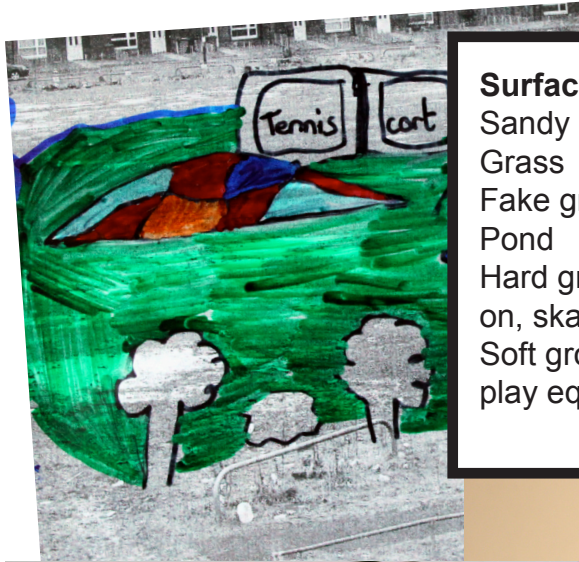


Workshop with St Anne's Primary school group. We visited the sites to get ideas and then drew the ideas onto photographs of the sites.



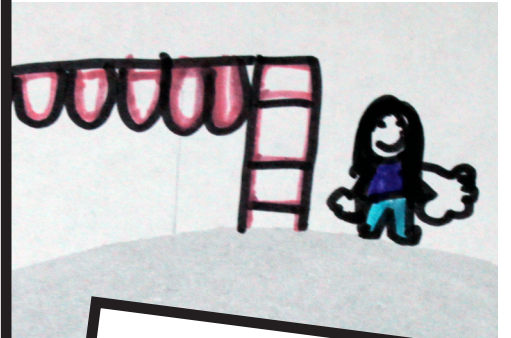
On Sunday 20th January 4 - 7pm images that had been generated by the primary school and the South Camlachie Youth Project were projected onto a screen set up in the sites of the proposed greenspace projects. Around 30 people came along and engaged in discussion. It also served as an opportunity to advertise the event on the 25th January.

Across the activities these are lists of everything that was mentioned in terms of equipment, activity and type of spaces



**Surfaces**

- Sandy
- Grass
- Fake grass
- Pond
- Hard ground for drawing chalk on, skating
- Soft grounds for underneath play equipment



**Play equipment**

- Climbing frame / net
- Swings
- Tunnel
- See saw
- Trampoline
- Monkey Bars
- Slide
- Maze
- Stepping stones
- Den / play house
- Rock climbing wall
- Roundabout
- Zip slide / flying fox
- Slide chute
- Sand pit

**Activities**

- Gymnastics
- Skating
- Biking
- Basketball
- Football
- Tennis
- Long jump
- Running track
- Adventure playground
- Event space
- BBQ
- Fireworks

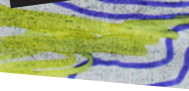
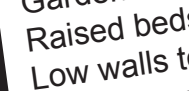
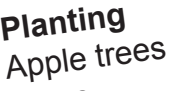


**Other**

- Lighting
- Stage for events
- Cafe
- Car park
- Benches

**Planting**

- Apple trees
- Trees
- Flowers
- Garden
- Raised beds
- Low walls to add structure and sit on





**Camlachie greenspace**  
 How do you imagine it? What would your priorities be?

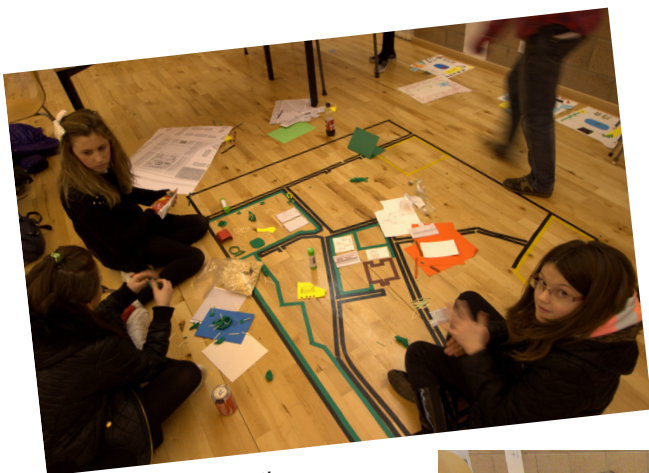
**Drop in and have your say at the feedback event on Friday 25th January 1 - 6pm in the G31 community centre**

Draw a picture, write down your ideas and feedback on the draft plans  
 Practical activities for children • food and refreshment • displays

**Feedback from the event on the 25th January 1 - 6pm**

Data captured through five different activity zones; Planting, Location and Facilities, Access, Maintenance, Character and Use.

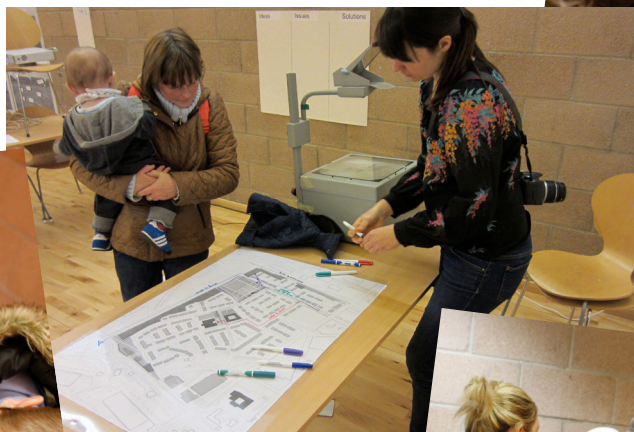
Attending were approximately 50 people of which around half were young people and around 15 didn't live in Camlachie. Also attending were the Dalmarnock Development Trust, Playbusters, Environment and Community Action Team and two local councillors (Cllr Thewliss and Cllr Kucuk).



Location and facilities



Character and Use



Access



Planting



Maintenance

	<b>Ideas</b>	<b>Issues</b>	<b>Solutions</b>
<b>Planting</b>	<ul style="list-style-type: none"> <li>• Low maintenance wildlife garden at the community centre – seasonal flowers and colourful</li> <li>• Flowers x 6 comments like this</li> <li>• Flowers in a box</li> <li>• Colours x 2 comments like this</li> <li>• Birds</li> <li>• Soft fruit</li> <li>• Orchard</li> <li>• Trees</li> <li>• A little garden</li> <li>• BBQ x 2 comments like this</li> <li>• Community events in bus park</li> <li>• Cafe</li> <li>• Place to just sit and hang out in a shelter</li> </ul>	<ul style="list-style-type: none"> <li>• Raising capital to deliver</li> </ul>	<ul style="list-style-type: none"> <li>• Partnership working</li> <li>• Use exiting CSGN training project to deliver</li> </ul>
<b>Location and facilities</b>	<ul style="list-style-type: none"> <li>• BBQ</li> <li>• Pool</li> <li>• Swing</li> <li>• Basket ball</li> <li>• Cafe</li> <li>• Places to hang about</li> <li>• Netball</li> <li>• Trees</li> <li>• Shelter</li> <li>• Places to play</li> <li>• Cycling</li> <li>• Maze</li> <li>• Football</li> <li>• Walking</li> <li>• Car parking (for shop)</li> <li>• Running</li> <li>• Fitness machines</li> <li>• Large play park</li> <li>• Flowers: Rose, Iris, Sunflower</li> <li>• Pond to swim in grow plants for ducks</li> <li>• Dogs allowed in some areas</li> <li>• Grow food; tomatoes, carrots, apples, cucumber</li> <li>• Events, music, games</li> </ul>	<ul style="list-style-type: none"> <li>• Fewer straight edges: curves allow for more accessible and comfortable seating and are 'natural'</li> <li>• People cut corners – design for that</li> <li>• Celtic park get their own car park – too busy</li> <li>• Need more space</li> <li>• Shop keeper wants everyone to see the shop and centre (not obscured by mound or housing)</li> </ul>	<ul style="list-style-type: none"> <li>• Put football pitches on the far side of bus park site (noise)</li> <li>• Small or medium car park for the shop (8 cars)</li> </ul>
<b>Access</b>	<ul style="list-style-type: none"> <li>• Lighting</li> <li>• Pathway between the proposed growing space and housing</li> </ul>	<ul style="list-style-type: none"> <li>• Car park</li> </ul>	<ul style="list-style-type: none"> <li>• Car parking for shop</li> </ul>
<b>Maintenance</b>	<ul style="list-style-type: none"> <li>• Allotments are a good idea</li> <li>• Would like a big play area</li> <li>• Climbing walls etc for older children / youths</li> <li>• Kickabout area – is there some other kind of fencing that can be used</li> <li>• Sand pit etc – like Glasgow Green – for young people</li> </ul>	<ul style="list-style-type: none"> <li>• Where is the money coming from?</li> </ul>	<ul style="list-style-type: none"> <li>• Don't allow fans access through the estate – fence off barrowfield st</li> </ul>

## Character and use

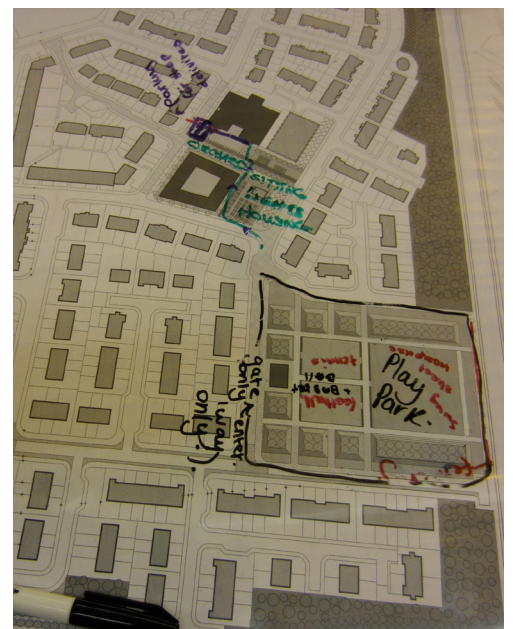
Words identified with each site

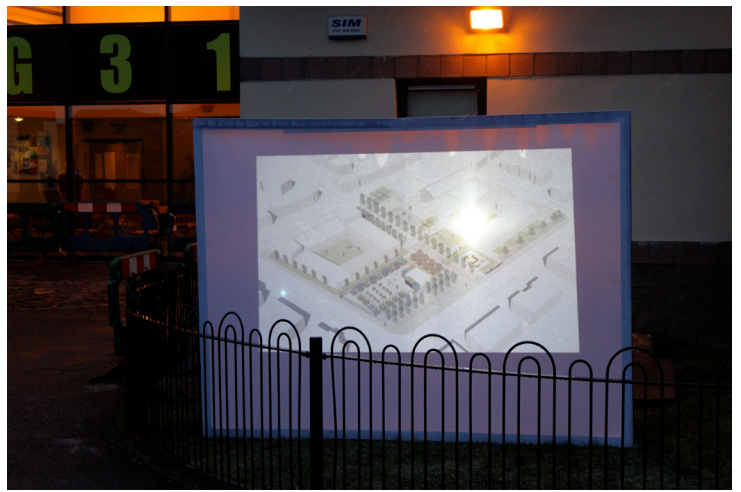
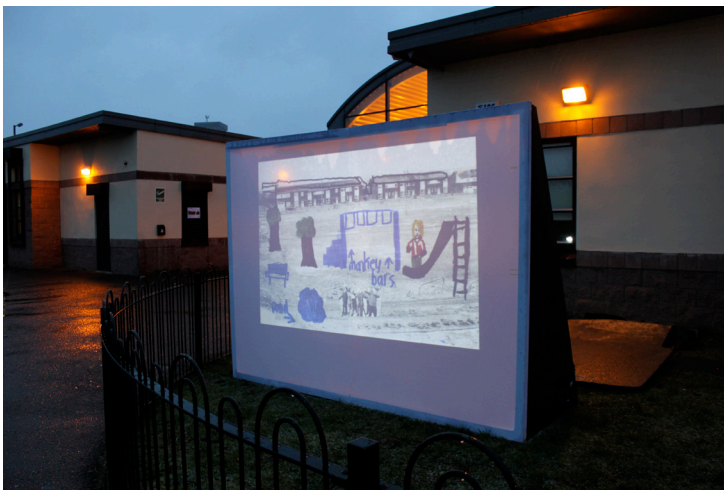
	How should it feel	What do you want to do
<b>Community Centre</b>	Quiet, Tranquil (3), Peaceful (2), Relaxing Lively, Adventurous, Playful, Active Safe (2), Enclosed, Open (2), Sheltered Bright (2), Leafy, Shaded, Fresh Flat, smooth Functional, Large, Accessible (3), Event space Attractive (2) Village Green Kids/family Sculpture	Walking (2) Biking/skating (4) Cycling Climbing (2) Playing (2) Jumping (2) Games Picnic (4), BBQ (3), Festivals (3) Sitting Gardening (3) Car parking Housing
<b>Bus park site</b>	Hilly (2), Smooth (2), Sandy, Soft Adventurous (4), Exciting (3), Active (2), Fun (4), Lively (2) Safe (2), Sheltered (2), Open (2) Large Bright, Interesting, Fresh Kids/family No dogs Park (2)	Playing (5) Games, Exploring Basketball, Climbing (3), Running (4), Tennis, Football, Walking, Skating (3), Biking (3) Gardening (2) Eating (2), Meeting, Fireworks (3) Dog walking (2) Housing (2) Five a side multifunctional court



## Access

- Liked the idea of having trees along London Road. Concern that trees would be used as toilets by football fans.
- Lighting the areas was thought to be important – particularly around the community centre
- People on Barrowfield street don't tend to travel through Camlachie unless they have children at the school or have a specific meeting or group at the Centre. A growing space at the Centre might encourage more regular journeys up that way.
- Shop was concerned about access for their deliveries
- Sitting places around the centre
- Important to fence off the play area so children didn't run out and people didn't walk through





Projecting the images outside the centre in the evening of the 25th



Kate from Playbusters had planting activities on offer and information about growing

Film maker Kim Beverage working with a group from the South Camlachie Youth Project to interview people about their thoughts on the sites. Ten people from Camlachie were interviewed, these are some of the things people said:

### What would you like to see?

- Somewhere to have fun
- Stuff to do
- Place to play
- Places you can just sit and be chilled
- More people coming into the community
- More activities for children and housing for elderly people so they don't have to move out the area
- Something everyone can use, needs to be inclusive
- People want play parks but not next to them, the bus park site is a good solution for that

### Would you use it?

- Boys usually play on the football pitches and young children use the park
- Barrowfield is boring, not a lot to do, it would save us from walking about the street and keep people out of trouble
- It needs to be a park that people will use and not lay idle, it needs to be good
- I'd use the seating next to the pond to have a cup of tea
- My family would use it



## Additional comments / feedback

Concern about having dog walking and picnic area next to each other

A few people (mainly parents) felt that play equipment should be installed on both sites as if it was installed on just one site then it would not be used by the whole community. A couple of people felt that play equipment was more needed by the south part of Camlachie than the north.

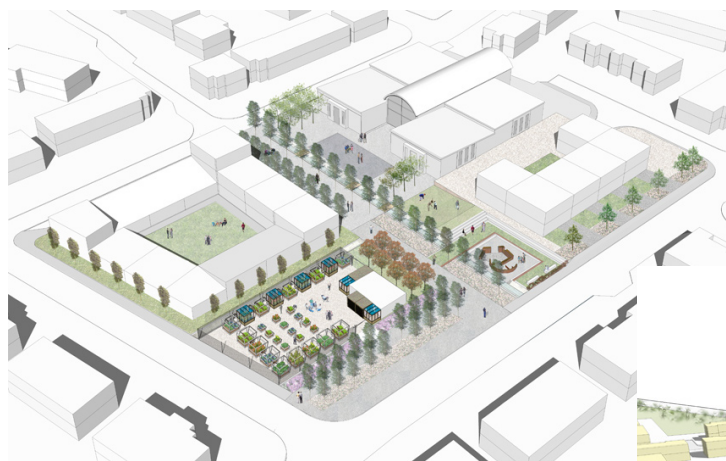
There was a commonly expressed opinion that a garden for growing produce would be destroyed both by people within the community and football fans coming through the area. The idea of having fruit did appeal to people; strawberries, raspberries, apples.

## Overall reflections

Somewhere to play was the most pronounced message, referring both to somewhere with play equipment and a safe space for children and family to hang out and play games. The primary school group really responded to the idea of natural play:- rocks to climb on / sit on, ponds to explore, space to run around. The South Camlachie Youth Project did a big project with young people about the greenspaces in 2003 and the ideas generated then were very similar to those that are being generated now. It would be good to keep the young people involved in the design of the playpark area.

Everyone was very positive about the development of both the sites even if they had different ideas about how they would like them to be developed. Even just cleaning up dumping and litter in the open spaces was seen as a positive move.

The car parking issue is something specific to the shop and wasn't mentioned as a general issue except in relation to the parking of football fans during games.



Draft designs by ERZ that were used to generate discussion at the event

