

Sandyhills Says Consultation Visual Brief

a Pidgin Perfect publication for Glasgow City Council, a Glasgow Commonwealth Legacy 2014 project with erz and EnviroCentre



Landscape
Urbanism
Design
Strategy



Contents:

a Pidgin Perfect publication for Glasgow City Council, a Glasgow Commonwealth Legacy 2014 project with erz and EnviroCentre

Layout and illustration:
Becca Thomas

© Pidgin Perfect. 2013
www.pidginperfect.com
studio@pidginperfect.com

All rights reserved. No part of this document may be reproduced or transmitted in any form or by any means, electronic or mechanical, including photocopying, recording, or by any information storage and retrieval system without express written permission from the author.



Introduction : Sandyhills Says... 03
Community, Engagement, Toolkits

1. Sandyhills Park Today 11
Public Space, Uses & Interactions

2. Tolleross Burn & Sandyhills Park 13

3. Sandyhills Park Future 15
Quality, Connections & Space 16
Recommendations

Appendix 19

Introduction

Sandyhills Says...

“Pidgin Perfect were commissioned by Glasgow City Council to deliver a short consultation programme as part of the Commonwealth Legacy Multifunctional Greenspace Project (MGP).

The MGP was conceived by Glasgow City Council, as one of nineteen Glasgow 2014 Commonwealth Games greener legacy projects. In essence, the MGP is about environmental placemaking, and seeks to deliver areas of enhanced high quality public openspace. The new sites will be important community assets and crucially they will also provide a range of other functions such as flood protection and wildlife habitat.

The Pidgin Perfect consultation was delivered within Sandyhills and Shettleston areas of Glasgow between the 12th March 2013 and 5th April 2013. Throughout each of the events Pidgin Perfect engaged local residents and park users on the design studies developed for Glasgow City Council by EnviroCentre and erz.

The focus of the Sandyhills Park MGP is water management, specifically the deculverting and comprehensive restoration of a circa 500m stretch

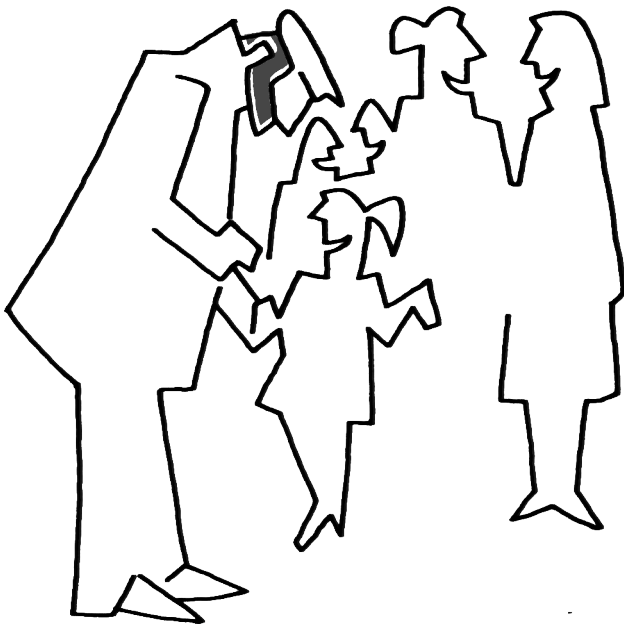
of the Tollcross Burn that runs through the park. This would be the first project of its kind in an urban area in Scotland.

In addition, the restoration will include provision for a reinstated floodplain within the park which will be allowed to flood under certain rainfall conditions, contributing to flood risk management further down the catchment. This was considered to be a potentially contentious issue though early engagement with key local stakeholders, led by Glasgow City Council, suggests that there is support for such an approach

Sandyhills Says... Consultation Plan

Pidgin Perfect planned three consultation events which would take place in the short time frame and include a number of different approaches to engage a representative sample of the local residents and other park users.

At Pidgin Perfect we use creative engagement techniques in every project we deliver. We believe that the best method by which to shape the success of a project and to generate consensus is to directly engage those who live, work and play in the wider local community with the project, and any



challenges it may have, as early as possible in the process. The Sandyhills Consultation is summarised into this 'visual brief' which documents the process of delivering the consultation; details gathered data, responses, outputs and evidences the objectives and scope of the community consultation outlined in the brief. Pidgin Perfect have also illustrated recommendations with regards to the future stages of the Sandyhills MGP.

*Thursday 28th March & Tuesday 2nd April
Community Stakeholder 'Focus Groups'*

Pidgin Perfect delivered two direct points of contact with a range of local park users and residents. The purpose of these sessions was to directly gather opinion, ideas, suggestions and concerns around the proposed Sandyhills MGP. These sessions were held on different days, times and locations, during the working week to widen the potential for participation from within the local community.

These focus groups were held at East Bank Academy and Sandyhills Community Hall & Learning Centre and were used to gather important associated data such as names, age ranges and post codes which will be used to support the scope of work and

justification of future recommendations.

Saturday 30th March

Creative Engagement Experience

This innovative and theatrical community wide creative engagement experience aimed to interact with those who were not previously consulted in January 2013 or through the Pidgin Perfect delivered Community Stakeholder 'Focus Groups'.

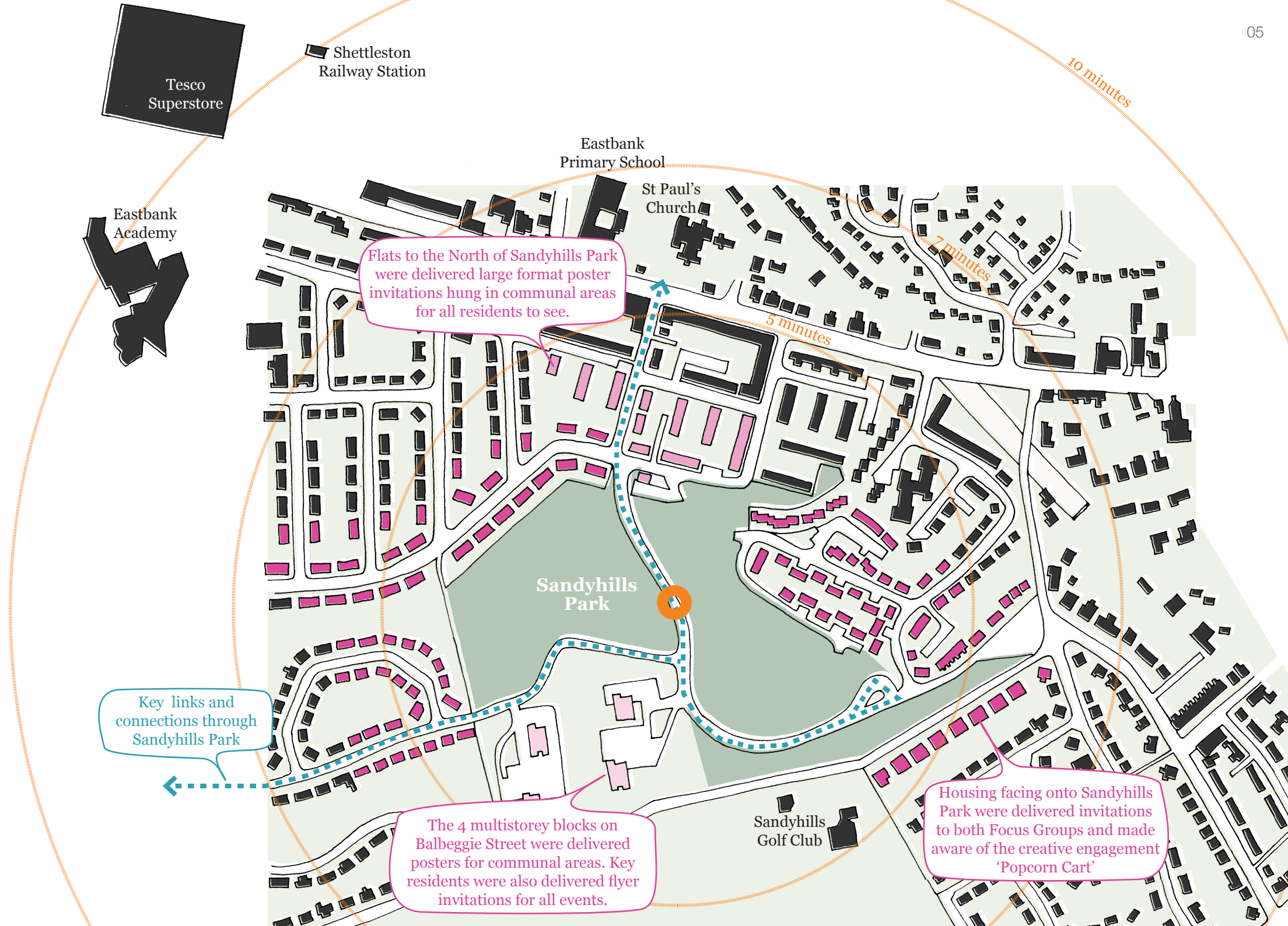
The creative engagement event took the form of a knowledge exchange delivered via a 'popcorn cart' toolkit that travelled to several key locations in the wider community one Saturday afternoon.

The creative engagement experience will aim to introduce the Sandyhills MGP to those unaware and generate a general awareness and understanding of the challenges associated with the project such as the provisional plan to reinstate the seasonal floodplain.

Local Contacts

The community was made aware of the consultation through a variety of methods:

- Flyer Invitations were delivered to key addresses in close proximity to the site, as shown;
- Social media, Twitter and Facebook, was used to publicise and promote the sessions through a live feed and engage local councillors and organisations in the process;
- Directly contacting a number of local residents and local community groups and amenities personally inviting them and their wider users participate:
 - Sandyhills Golf Club
 - Shettleston Growing Project, Marion Bate
 - Shettleston Juniors Football Club
 - St Paul's Church, Father John Campbell
 - Tenants & Owners Association, Chair, Maria O'Brien
 - Eastbank Academy
 - Eastbank Primary School
 - St Paul's Primary School
 - Wellshot Primary School
 - Sandyhills Community Council
 - Councillors Anne Simpson, Frank McAverty, Bailie John McLaughlin and George Ryan
 - Glasgow Housing Association, Housing Officer, Maura McGregor
 - Gabe Wortman, Environmental Community Action Team, GCSS



Tesco Superstore

Shettleston Railway Station

Eastbank Primary School

St Paul's Church

Eastbank Academy

Flats to the North of Sandyhills Park were delivered large format poster invitations hung in communal areas for all residents to see.

Sandyhills Park

Key links and connections through Sandyhills Park

The 4 multistorey blocks on Balbeggie Street were delivered posters for communal areas. Key residents were also delivered flyer invitations for all events.

Sandyhills Golf Club

Housing facing onto Sandyhills Park were delivered invitations to both Focus Groups and made aware of the creative engagement 'Popcorn Cart'

10 minutes

7 minutes

5 minutes

Sandyhills Says... Engagement Toolkits

Over the course of the project Pidgin Perfect developed a visual identity for all consultation materials, invitations, signage and responses. This was well received and widely recognised within the local community during the consultation events.

The “Sandyhills Says...” toolkits included a number of elements used at all consultations and was designed with a friendly and useful aesthetic whilst remaining understandable.

Focus Group Toolkit

‘Wallpaper’ boards | Sandyhills Says... Postcards
Banner Signage | Pens, Pencils, Post Its

The wallpaper boards were designed to be a single tool which could be used both to inform participants of the proposed changes to Sandyhills Park through drawings and diagrams and to capture their responses to the three questions:

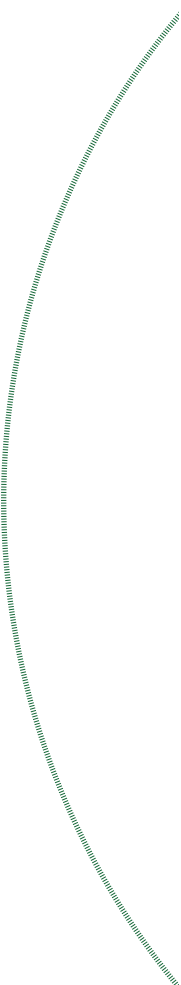
1. What do you think of Sandyhills Park today?
2. What do you think Sandyhills Park could be?
3. What do you think of the proposed changes?

Popcorn Cart Toolkit

Popcorn Machine, Popcorn and Popcorn Pokes |
Sandyhills Says... Postcards | Thank you Stickers
Banner Signage | Pens, Pencils, Post Its

The popcorn cart with the additional signage created a high impact visual prop that stood out and attracted curiosity in a familiar streetscape.

Pidgin Perfect spent the day swapping delicious portions of popcorn for people’s thoughts, incentivising the opportunity for them to learn more about the Sandyhills MGP and provide their comments and responses.



Tesco Superstore

Shettleston Railway Station

Eastbank Primary School

St Paul's Church

Eastbank Academy

Sandyhills Park

Planned route for Popcorn Cart Engagement

1. Multistorey Flats
2. St Paul's Church
3. Shettleston Railway and Tesco Superstore
4. Shettleston Juniors
5. The Forge Market

Community 'Focus Group' 1
 Thursday 28th March 5.30 - 7.30 pm
 Eastbank Academy, 26 Academy Street
 Participants : 6

Proposed Route for the daylighted Tollcross Burn

Actual route taken for Popcorn Cart Engagement

1. Multistorey Flats
2. Shettleston Railway and Tesco Superstore
3. Sandyhills Corner Shop

Community 'Focus Group' 2
 Tuesday 2nd April, 12 - 3pm
 Multis Tenants Hall, 20 Balbeggie Street
 Participants : 12



2.

3.

1.

7 minutes

5 minutes

7 minutes

5 minutes

SANDYHILLS SAYS

Hello,
 Pidgin Perfect would like to invite you to take part in one of the consultation events we will be holding over the next week.

We are working with Glasgow City Council, erz and EnviroCentre to gather your opinions, thoughts and ideas for Sandyhills Park and the possible changes which include reinstating Tollcross Burn to its natural route through the woodlands.

We would really appreciate your attendance at one of the events:
 28th March, 5.30 - 7.30pm
 Eastbank Academy, 26 Academy Street

2nd April, 12.00 - 3.00pm
 Sandyhills Tenants Hall, 20 Balbeggie Street
(Tea, coffee and baked goodies will be provided)

Also, keep an eye out for us in the area on Saturday 30th March as we will be travelling round exchanging popcorn for your opinions all day!

Looking forward to meeting you soon.
 Becca and Jess
 Pidgin Perfect



Please contact Becca at Pidgin Perfect for further information:
becca@pidginperfect.com, www.pidginperfect.com
 0141 226 4092 or 07949 625 985





SANDYHILLS SAYS

I USE SANDYHILLS PARK

I THINK THE PARK IS

I WOULD LIKE TO BE ABLE TO

I THINK THE PROPOSAL FOR SANDYHILLS PARK AND TOLLCROSS BURN IS

IN SANDYHILLS PARK

NAME: _____ POSTCODE: _____ AGE: _____ SCHOOL AGE CHILDREN? _____



35.5% Frequently

As a shortcut, for dog walking and taking children to play outside

41% Sometimes

Only in good weather, if my grandchildren are visiting

I use Sandyhills Park...



23.5% Not At All

Not anymore, I avoid the park because I feel unsafe, too dark



20.5% Okay



13% Nice

66.5% Terrible

1. Sandyhills Park Today

Pidgin Perfect structured the engagement to ask three main questions: What do you think of Sandyhills Park today? What do you think Sandyhills Park could be? and, What do you think of the proposed changes? There were additional instructions and several subsidiary questions within the toolkits in order to gain further insight into people's opinions and thoughts.

Questions Asked | Sandyhills Park Today

What activities do you currently use Sandyhills Park for?

What do you think of Sandyhills Park at the moment?

How do you currently use Sandyhills Park?

How often do you visit or walk through the park?

I enjoy ... in Sandyhills Park

The best thing about Sandyhills Park is ...

The worst thing about Sandyhills Park is ...

I go to Sandyhills Park for ...

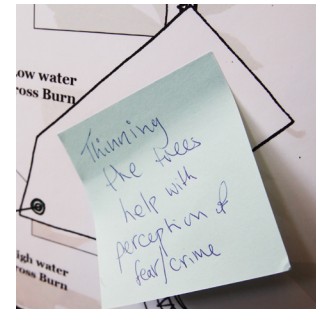
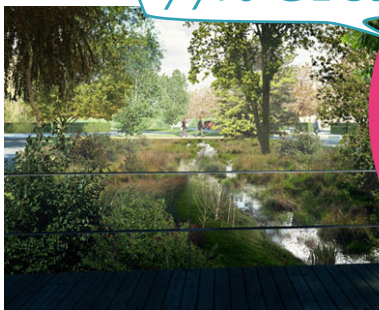
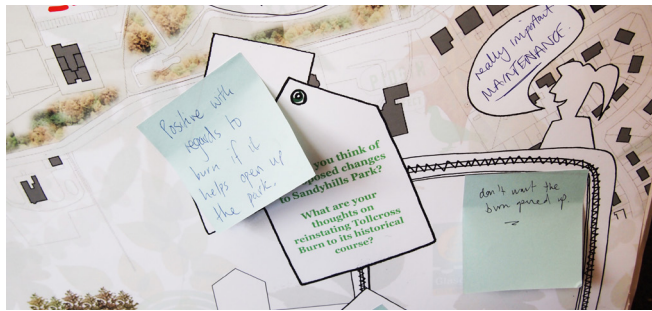
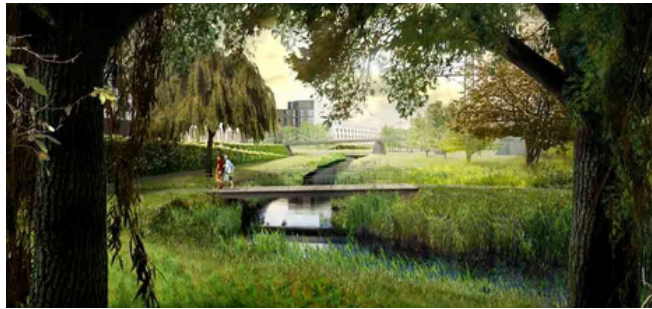
Public Space, Uses & Interactions

"I think the park is, a dump, under-used, scary, dangerous, boring and a crime haven."

Mainly used as a shortcut, a dog walking space and not usually a place to come and spend free time. Some people used to use the park a lot more than they do now because features have since been removed leaving the park 'lifeless' and 'boring'.

Things that used to attract people were outdoor exercise equipment, play areas for children, benches and sculptures. The foliage and trees have become overgrown, increasing the sense of insecurity amongst people using the park as they cannot see potential dangers, especially since daylight and street lighting are compromised.

The local residents feel the park is not well maintained and has a sizeable anti-social behaviour problem with young people drinking in the park, heard yet unseen behind trees. Litter is also an issue with broken glass, dog fouling and excess leaves underfoot.



77% Great

I think the proposal is...

21% Okay

2% Terrible

2 Sandyhills Park & Tollcross Burn

Pidgin Perfect structured the engagement to ask three questions: What do you think of Sandyhills Park today? What do you think Sandyhills Park could be? What do you think of the proposed changes? Additional instructions and subsidiary questions within the toolkits gained further insight into people's opinions and thoughts.

Questions Asked | Sandyhills Park and Tollcross Burn

What do you think about the proposal for Tollcross Burn and Sandyhills Park?

I would like to be able to ... in Sandyhills Park

I think the park would benefit from ...

I would like a ... in Sandyhills Park

What do you think of the proposed changes?

What are your thoughts on reinstating Tollcross Burn?

Sandyhills Park and Tollcross Burn

"A brilliant idea, we need more than just the burn, as long as it will stop the flooding. This will transform the area."

Overall the responses to the proposal were positive but with several questions and suggestions to make this project successful within the local community. Wholly negative responses were limited but worries about maintenance, management, litter and safety were common

"Will it stop the flooding?"

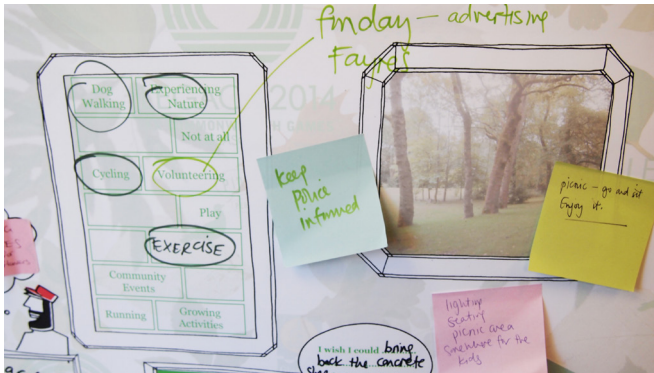
A large majority of participants had questions about the capability of the reinstated burn to handle flooding. They wanted to know that the proposal would reduce localised flooding near their home and in their gardens.

"Will it be safe?"

A major worry was safety and the depth of the reinstated burn. The community wanted assurance that the project would deliver a safe community amenity. With the understanding that children and teenagers would gain access to the water whatever measures were put in place, there was no desire for security fencing to be included. More, the wish was that the design should include safe interactions with the water and a nature and wildlife walk.

"Is that it?"

The most common suggestion from participants was a desire for additional services and amenities to be provided as part of the project. Many of these centred around the burn and could be introduced within the design for Tollcross Burn and Sandyhills Park. Amenities suggested include: wildlife boardwalks to the water; fishing and other water based activities; educational opportunities for children and youths; integrated seating, lighting strategies; and, cycle, walking and outdoor gym networks.

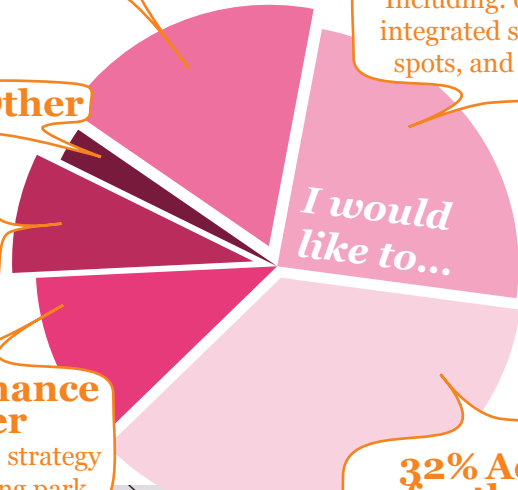


20% Wildlife
Desire to see more wildlife and natural elements within the space

26% Enjoyment
Including: outdoor gym, integrated seating, picnic spots, and natural play

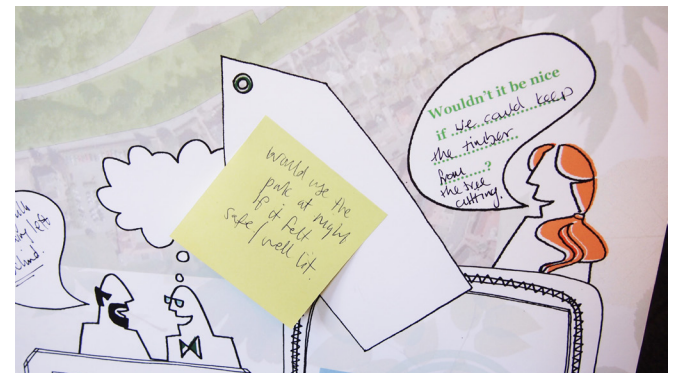
2.5% Other

8.5% Safety
Better lighting, a less dense tree line and undergrowth



11% Maintenance and Litter
Better management strategy and a cleaner looking park

32% Activities for the Youth
An overall desire to see "something for the teenagers to do, a space that is theirs" suggestions for a skate park



3 Sandyhills Park Future

Pidgin Perfect structured the engagement to ask three main questions: What do you think of Sandyhills Park today? What do you think Sandyhills Park could be? and, What do you think of the proposed changes? There were additional instructions and several subsidiary questions within the toolkits in order to gain further insight into people's opinions and thoughts.

Questions Asked | What Could Sandyhills Park Be?

What activities would you like to use Sandyhills Park for?
What should this park space look like?

I would like to see ...

What would you like to see in the park?

Is there anything that you would like to include?

I wish I could ... in Sandyhills Park

Describe and draw your wishes and hopes for the park.

Quality, Connections & Space

"It's nice to see something being done in the park, it used to be nice and have lots of nice features, we need that again. Its in a great location but no one knows it's there"

Overall the responses to the proposal were positive but there was a real community wide desire to see additional work in Sandyhills Park. There is a feeling that this green

space has been ignored and that "Sandyhills is falling behind". Maintenance was a common concern regarding both the proposed burn project and any additional future work to Sandyhills Park, this is the most important thing for many local residents. Their desire is for a park they can use and enjoy.

Activity

Many of the participants suggested, independently, that they would like to see "something for the youth". The wish is to see teenagers given something to do in the park rather than engaging in anti-social behaviours. Suggestions included graffiti safe spaces, skate parks, ramps and cycle networks.

Additionally for themselves the participants wanted to see integrated seating and lighting allowing them to enjoy the space. The wider thought was that more features in Sandyhills Park would encourage people to stay in the area and use their park rather than driving to others.

Connections across the road and an outdoor green gym, like there used to be, were suggested several times and there are clearly active older residents and families within the area that could make use of this type of amenity.

Recommendations

Overall the responses to the proposal for Tollcross Burn and Sandyhills Park were positive and there seemed to be a community wide feeling that improvement and change would be welcomed by the majority of park users and local residents.

The majority of those spoken to would also like to see additional projects and amenities for Sandyhills Park. There is a feeling that the park could be an excellent community resource, but currently it is too dark, overgrown and “scary” to be used widely by the local residents.

Concerns about the flooding risk, anti-social behaviour and maintenance were most common. In the case of flooding, if the proposal would reduce the flood risk to homes, gardens and pathways people were in favour of daylighting the burn.

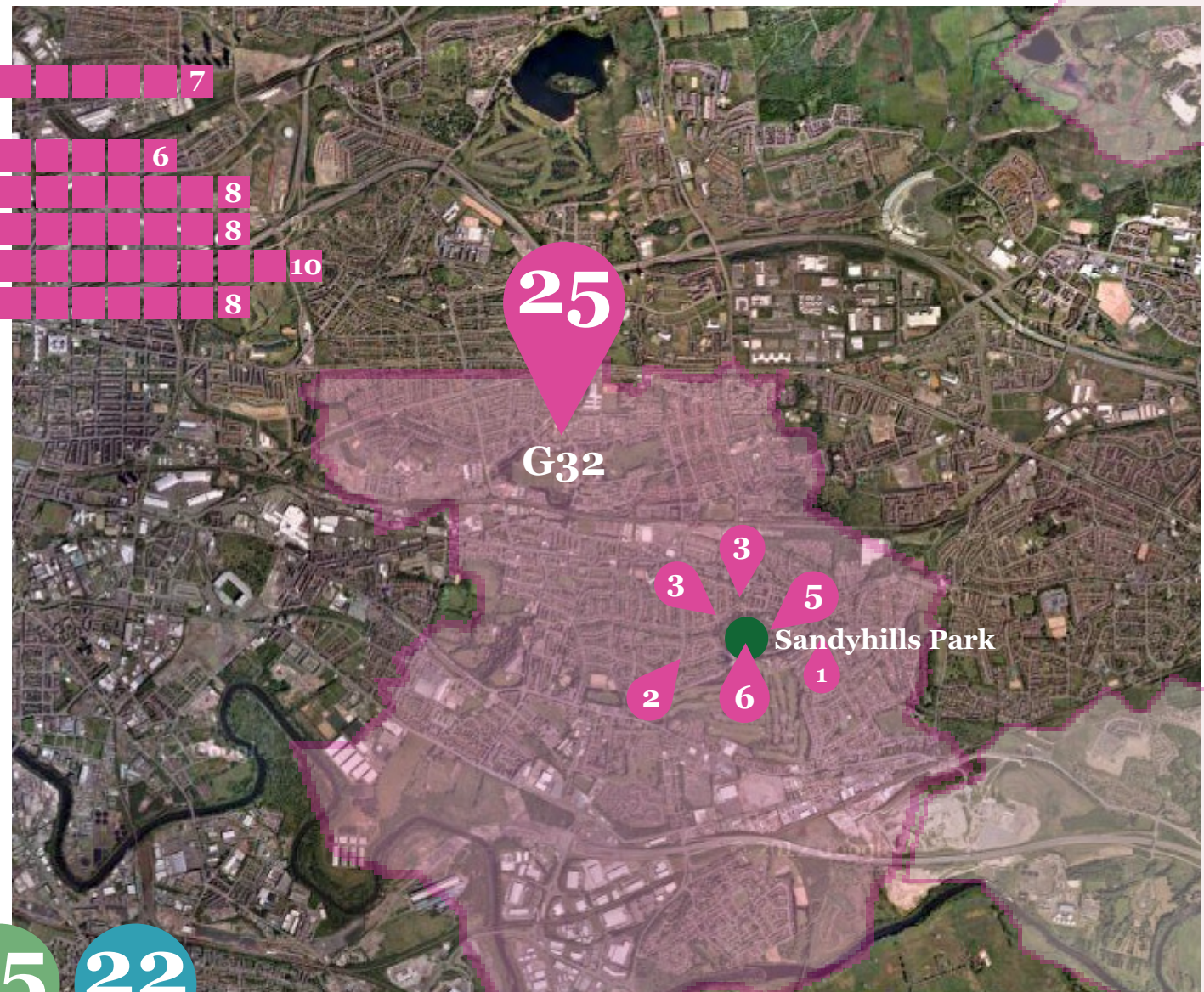
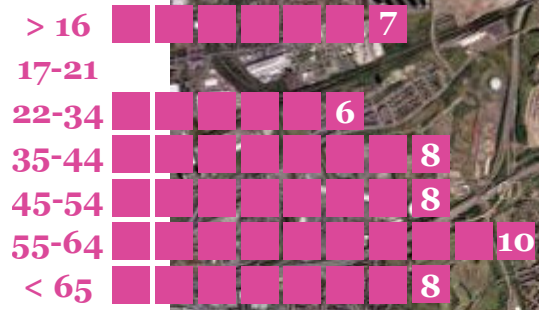
With regards to the anti-social behaviour and maintenance concerns, it was discussed that the current level of police presence - foot and bike patrols as well as driving through the park - has given some people peace of mind, but there are still groups of youths using the park to hang out.

Many people suggested that by simply providing a space designed for teenagers and youths, the feeling of anti-social behaviour and the fear associated with the park could be minimised for local residents. The disused football pitch in the centre of the park was suggested multiple times as a suitable location for this.

The maintenance and management of the park was deemed incredibly important by all the participants in this consultation. The majority of the concerns focus on failure to remove trees which were blown down many months ago and a failure to adequately maintain the litter within the park. Everyone would like to see a visible presence and a well managed and carefully maintained park space.

Key Recommendations from Consultation:

- 1.** The Tollcross Burn project should act as a catalyst for continuing improvement to Sandyhills Park
- 2.** Phase I should include additional amenities in line with the burn and wetlands: seating, lighting, boardwalk and safe access points to the water, green gym, cycle and walking networks
- 3.** Phase II to include further amenities and designated spaces for youths
- 4.** The burn should help reduce the localised flooding risk to homes, gardens and streets
- 5.** The management and maintenance strategy for the park should be considered during the design



G69
1

G71
1



Flyered Households
Potential Poster Views

Tuesday 2nd April
Thursday 28th March
Saturday 30th March
Email Responses

Appendix

“

This appendix includes a look at the use of social media throughout the consultation programme and a full list of the responses from both Focus Groups and the Creative Engagement. These are organised under the four main questions that Pidgin Perfect posed to participants:

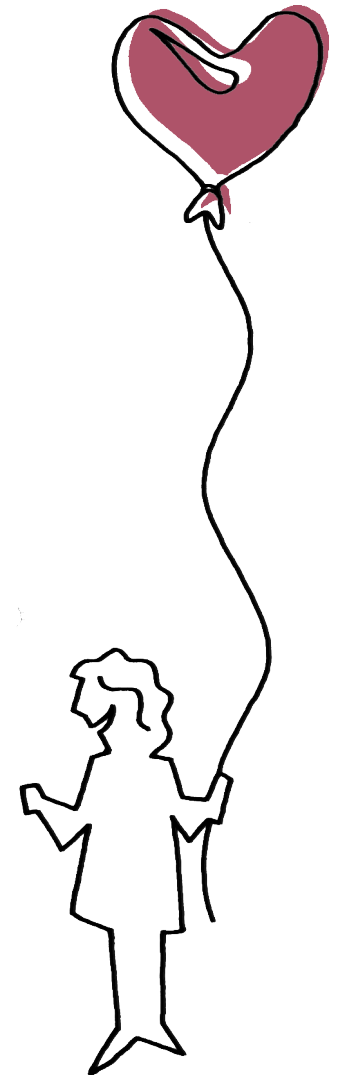
I use Sandyhills Park ...

I think the park is ...

I would like to be able to ... in Sandyhills Park

I think the proposal for Sandyhills Park and Tollcross Burn is ...

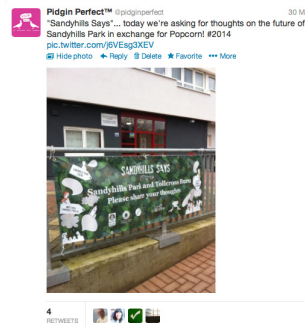
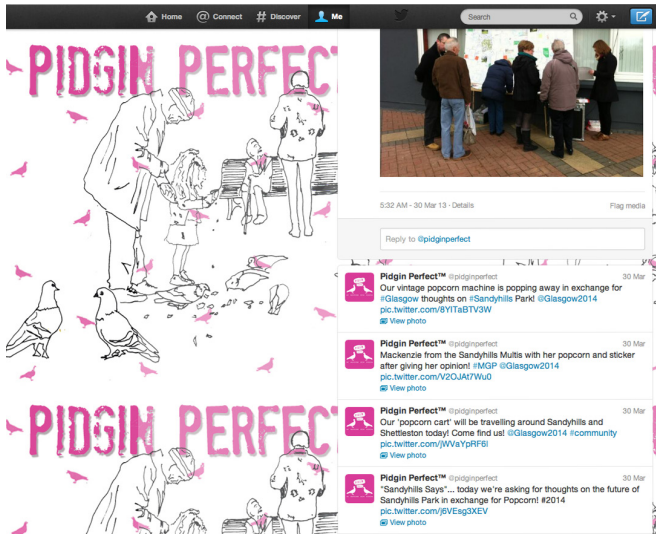
Pidgin Perfect recorded all replies, concerns, thought and ideas as well as participants suggestions and questions to the design team. All responses have been anonymised in this report, however Pidgin Perfect included an additional visualisation showing participants postcodes, gender and age ranges to give an overall idea of the community it was possible to engage in the short time period for Sandyhills Says ...



This page details Pidgin Perfect's twitter feed and communications regarding #SandyhillsSays.

Pidgin Perfect used social media throughout the consultation process to document and tell a wider audience about the engagements. In addition, we used the medium to directly contact certain key organisations and local figures for wider awareness.

Over the course of the consultation Pidgin Perfect were retweeted 11 times and several replies regarding the engagement photos and outcomes.



Marc Cairns @marocairns 30 Mar

Delivering a series of creative engagement events today with @pidginperfect in the East End of Glasgow...
[instagram.com/p/Xe1p0GqWRE/](https://www.instagram.com/p/Xe1p0GqWRE/)
 Retweeted by Pidgin Perfect™

1 RETWEET 1 FAVORITE

5:39 AM - 30 Mar 13 · Details

Reply to @marocairns

Pidgin Perfect™ @pidginperfect 30 Mar

Great response at Sandyhills Multi's! Next stops; Shettleston train station, Tesco and Forge Market! #MGP #2014
pic.twitter.com/B97SqyK4hR

Hide photo Reply Delete Favorite More



Home Connect # Discover Me @sandyhills

Tweets

Who to follow: Secret Escapes, Peter Murray, Guardian Scotland

Results for #sandyhills

Pidgin Perfect™ @pidginperfect 2 Apr
 We've had a great time meeting the local residents of #Sandyhills to discuss Sandyhills Park & look forward to reporting back to @GlasgowCC!

Pidgin Perfect™ @pidginperfect 2 Apr
 Thanks to everyone who came along to our #Community Focus Group in #Sandyhills yesterday to discuss thec @Glasgow2014 #MGP! #greenspace

Pidgin Perfect™ @pidginperfect 30 Mar
 Local children are loving our popcorn treats for our @Glasgow2014 #MFG consultation in #Sandyhills today! #Yummy!
pic.twitter.com/PL9ZZGicQb

Pidgin Perfect™ @pidginperfect 30 Mar
 Jess scooping out some popcorn for more local #Sandyhills residents who are speaking with us today about their park!
pic.twitter.com/XYOUkhtv

Pidgin Perfect™ @pidginperfect 30 Mar
 Our vintage popcorn machine is popping away in exchange for #Glasgow thoughts on #Sandyhills Park @Glasgow2014
pic.twitter.com/8YITaBTv3W
 Retweeted by Emily Chappell

DEGS- @Degman10 26 Oct
 Up there with one of the best photos ever #Jump #Geez #it
[Instagr.am/p/RQQiLA5xn/](https://www.instagram.com/p/RQQiLA5xn/)

Pidgin Perfect™ @pidginperfect 30 Mar
 Mackenzie from the Sandyhills Multis with her popcorn and sticker after giving her opinion! #MGP @Glasgow2014
pic.twitter.com/VQOUkYUd



Pidgin Perfect™ @pidginperfect 30 Mar
 Our 'popcorn cart' will be travelling around Sandyhills and Shettleston today! Come find us! @Glasgow2014 #community
pic.twitter.com/WVx9p9f9



1 RETWEET

Pidgin Perfect™ @pidginperfect 30 Mar
 Jess scooping out some popcorn for more local #Sandyhills residents who are speaking with us today about their park!
pic.twitter.com/XYOUkhtv

Pidgin Perfect™ @pidginperfect 30 Mar
 Local children are loving our popcorn treats for our @Glasgow2014 #MFG consultation in #Sandyhills today! #Yummy!
pic.twitter.com/PL9ZZGicQb

Pidgin Perfect™ @pidginperfect 2 Apr
 We've had a great time meeting the local residents of #Sandyhills to discuss Sandyhills Park & look forward to reporting back to @GlasgowCC!

11:21 PM - 2 Apr 13 · Details

Reply to @GlasgowCC

Pidgin Perfect™ @pidginperfect 2 Apr
 Thanks to everyone who came along to our #Community Focus Group in #Sandyhills yesterday to discuss thec @Glasgow2014 #MGP! #greenspace

11:19 PM - 2 Apr 13 · Details

Reply to @Glasgow2014

I use Sandyhills Park ...		I think the park is ...		I would like to be able to ... in Sandyhills park		I think the proposal for Sandyhills Park and Tollcross Burn is ...		Questions?
Frequently	Everyday at the allotments	Nice	Full of dog walkers	Wildlife	See the soil cleaned up, it's full of rubbish from the old steelworks.	Positive	YES!	Can you fish in it?
	Everyday		For weans		See the greenhouse re-open.		This would be great for the area	Can you swim in it?
	For peace quiet, walking my dogs		Alright		See more growing spaces & use more of the parklands.		good	Budget? Is this affordable? Will this happen?
	For taking shortcuts to shop, walking the dog.		Alright, I quite like the park.	Revitalise Sandyhills, not create a new Tollcross / Kelvingrove Parks. But they are good examples of well used and maintained spaces	Good to reduce the flooding	Will we be involved in this in the future?		
	Yes		Fun for me.	Thinned trees	Cool.	Will there be play areas for kids?		
	Always with the dogs		Well situated.	Like Kelvingrove Park	Great, as long as no more flooding.	How will the flooding in Adgay Street be handled?		
	For taking the kids	Good for walks & sitting	Introduce deer and other wildlife. Could we share the sheep in Tollcross Park to maintain the grass	Could be add piranha to the burn? That would keep the kids out the water	Will this burn flood?			
	Dog walking	Overall good and green	It would be great to see more wildlife, something for the kids	Brilliant, lovely, super. I love the wetlands idea.	Budget?			
	Often	Green, nature, wildlife and peaceful during the day	Features made of natural things	A great idea, open for expansion for kids play areas, cycle routes, seating areas. The park needs more light at nighttime.	What is the timescale?			
	Walk through as a shortcut	Okay	Bland and full of mud	See more wildflowers.	On the right wavelength, the right move for this area - something simple is best. Should stop kids from opening the fire hydrants.	Can we get the old bus route back? Think the bus stop is too far away to walk for older people.		
	Walking		Needing a good clean	See more wildlife, ducks and a nature walk/boardwalk.	The water will be great for kids in the summer.	Who is going to manage the park and keep it clean and free of leaves which cause flooding? And for how long will the park be looked after?		
	Play football, basketball and cycle.		Underused	Go for walks around the park	A very good idea but I feel it would need cooperation with police to make sure it was being kept nice by them patrolling every so often. I would like to see trees with name plates so children would be able to identify the type of tree they are looking at.			
	Shortcut to Shettleston		Boring	Fish in the park	A very good one and would enhance enhance the area (provided it is regularly maintained.).			
Everyday	Underused.		Wouldn't it be nice if we could keep the timber from the tree felling and use it for features in the park - sculpture and seating maybe?	A brilliant idea - we need more than just the burn - we needs things to kids and the youth as well.				
Walk through as a shortcut	Boring/Dull		Well maintained openspace with trees, wildlife and good lighting	Has possibilities. The park should be used The burn is a very good idea!				
Dog walking	Dull, dormant. No wildlife.	Wildflowers and colour would be nice, maybe those large planters?	A great idea to use unused space.					
Walk to school	Underused	Enjoyment	Lighting for all footpaths	Good.	Will transform the area.			
Walk through as a shortcut	Could do something better with it.		Picnic space, somewhere to sit and enjoy the park	An excellent idea for recreational purposes, and good for drainage.				
Occasionally	Occasionally	Okay	Picnic area, well lit seating areas	A very good idea and can only be good for the community.				
	To take my grandchildren into	I like Sandyhills park because of its convenient location.	Would use the park more if I felt safer there. Lighting and management are important to keep the youths out / contained	Lovely so long as people aren't going to fall in. Flooding might be an issue but the wetlands sound good.				
	Only in the summer months	Is not really like a park at the moment.	Peace and quiet,	Fine, I like that idea.				
	Dog walking	Was great 10-15 years ago	Back to the way it used to be 12 years ago.	Grand.				
Walking	Neglected park, but still a park	We need benches	Great. Anything like this would be great.					

I use Sandyhills Park ...

I think the park is ...

I would like to be able to ... in Sandyhills park

I think the proposal for Sandyhills Park and Tollcross Burn is ...

Questions?

Only to walk through, used to use more but not now.

To take kids to play

For the kids to have a kick about

For the past 40yrs

Less & less

To walk through to the school.

For recreation & exercise

The kids use the flooding areas to play 'getting splashed by the bus'

I used to use the cycle and walking paths, these are now overgrown

More now the police patrols make me feel safer

Not enough seats but quite happy with it the way it is

Sitting, in summer

Playing outside

I use the park about once a fortnight to once a week..

The main reason I use the park is as a short cut to visit family and friends

In good weather I use the park more often to walk for pleasure and I like to go there with my husband to have picnics in the evenings on warm days.

I don't its not useful

Not any more, used to with the dog.

That's not a park!

Cant't use it as a park.

Terrible

Dark, with too many trees

A disaster, a disgrace

Needs a proper cleaning and management system

Not enough work is done in the park to keep it up to standard

I can't believe the state its in

Needs less dogs, its too dangerous at the moment

Not well maintained, needs looked after, not much happens, full of shopping carts

Badly needing to accommodate the use of props and exercise points

Unkept, requires regular maintenance, lighting seating, clean paths, drains, flooding, bins.

A disgrace, a dump

Too dark and creepy

Flooded too much.

Doesn't have much to do in it. Too much flooding like a swamp

Worse now than before, they took away good things like playparks

A dump where the prefabs used to be.

Too many thick trees

Full of dog fouling, antisocial behavior

Dog walkers vs. Kids is a problem.

Too much very heavy foliage, too many trees.

Too much very heavy foliage, too many trees.

Maintenance

Places to sit, vandal proof benches

Picnic area

Be nice and be able to go and enjoy the park

Make it useful

Have a picnic in the park

Have a nice walk

Enjoy the park

I like the park the way it is. I don't want it to change

Be able to enjoy it, go and sit and take the grandkids to.

Use the park in the summer time.

Feel safe in the park at night & see the park used to educate young people about wildlife/nature.

Learning opportunities - labels for plants / flowers?

Volunteering and community events, Fundays and Fayres

Just walk through again. And see less graffiti.

Keep up the good current police presence and keep them informed

Removal of the remains of the 'Tin Man'

Safety and security around dogs to make it less dangerous for young children

Management. How can we make this park beautiful?

More TLC for the park, better maintenance from users and park management at GCC

More rubbish bins to reduce the litter problem

Good

Okay.

Great as it will lessen the depth of flood. But as soon as something new is put in, it gets ruined.

Good, it will encourage wildlife, and hopefully more people will appreciate better facilities.

Excellent!

Fantastic.

Very interesting. I hope the local people enjoy it and do not deface it/misuse it.

Good - going to need properly managed, cleaned and looked after for a long time.

They (kids) might just chuck rubbish in the burn and ruin it.

Great. The people need to feel safer when in the park.

Great.

I'm glad something is being done

I'm delighted? for the youth and the the kids of Sandyhills

Great for learning opportunities - tree identifiers and that sort of thing, like the Botanic Gardens

I think the plans for the burn are great and we would definitely enjoy looking for birds and other wildlife and I'd be delighted if there were more benches put in and maybe some baby swings too!

I think any investment in the park would be helpful to encourage more people to use the park and make it a little safer.

Would be great for the area. Making it a park that people want to go to.

Agree with it

I hope this will help with the local wildlife, frogspawn and tadpoles etc...

Good response to opening up the burn and creation of wetlands. Will be great for wildlife

I think its a good idea and its ideal

I use Sandyhills Park ...	I think the park is ...	I would like to be able to ... in Sandyhills park	I think the proposal for Sandyhills Park and Tollcross Burn is ...	Questions?
Used to about 15yrs ago.	A crime haven. Has a dog fouling problem. Has too much graffiti.	Not step on dog dirt/broken glass	I think its brilliant	
I do not normally use the park.	Under-managed and in need of upkeep.	Activity Take my grandchildren to the park, (right now I go to Tollcross)	Designing needs to be for safety and use by all ages	
I do not use the park.	Terrible	Better play areas, closer to the shop, skate parks	I have no problem with the burn proposal	
Not any more, I used to always use it when my kids were young and it used to be grand.	Horrible	Take the weans up the park, see fairs and events held in the park.	Allotments have been successful at the Multis, there is a potential to extend these if land within the park could be given over to additional allotment and community garden space	
Used to walk through	Currently a disgrace. the park is not well managed or well used.	Activities for kids, more appealing space to use.	It will make a big difference	
Not at all	Untidy, never cleaned, not looked after. Full of broken glass.	Have a swing park, bring back features like the iron man sculpture.	I like the idea of a nature walk	
Not at all	Spooky, dark, like a zombie film	See cycle paths, for children, safely able to cross roads.	Boardwalks and safe access points along the burn	
Not at all	Lack benches	Take my kids to enjoy the park.	Nature walks would be nice to take my grandkids to this park. Now I take them to Tollcross Park	
	Poor lighting	Take my children to play in the park	Walking club - great if the burn could be used for recreation along the route of the burn	
	The bins don't get emptied regularly	Play more and use for the for the boys. Seating & natural bits.	Positive with regards to burn if it helps open up the park	
	Litter problems and fly tipping around the bus terminus and 'Tin Man'	Take kids to have fun activities, have picnics.	I would like a Nature Walk along the burn	
	Poor maintenance of trees	Take kids for a walk in the park. See more maintenance, and see more things that make it a park (swings etc).	Cycle Paths along the burn?	
	Flooding and drainage issues	Sunbathe, kids to have a place to play with bikes, and other activities.	Concerns Shouldn't be too deep, got to be safe for the youths and kids to play in the water.	
	Problems with graffiti	Outdoor gym	Must be looked after or else it will be a disaster	
	Youths assemble during the night and drink.	My grandkids are really into skating, we would like to see a skate park or some features for them to use	Safety of open water. The kids will get there no matter what you do	
	Low / poor park maintenance	Give the youths something to do that isn't hanging out on my doorstep. Could they use the disused football pitches instead? Thats far away from all the houses	Its got to be safe for people to enjoy it. Safety is important.	
	Full of dog fouling, antisocial behavior	Bike Paths	Gates? Security? Entry? Exit?	
	Low / poor park maintenance	A skate park.	I think the park will benefit from a well developed Management System	
	Full of dog fouling, antisocial behavior	The old football area is never used now. Something should be put here. Something like a playpark or skate park	As long as it helps with the flooding	
	Feels like it is split in two because of the road	I would like a skate park in Sandyhills Park	More police patrols will be needed to make people feel safe and stop the teenagers being an issue.	
	Unusable and really muddy in winter	No play spaces opposite our houses, the youths will just hang out there and disrupt our evenings and nights	Tree thinning is required, especially the trees which hang over houses	

I use Sandyhills Park ...

I think the park is ...

Sandyhills is getting left behind

What I don't like is I find the park a little scary.

It is difficult to find a bench if you want to sit down.

I associate the park with drug and alcohol misuse and I don't like to go there alone.

I would like to be able to ... in Sandyhills park

Cycling

Exercise

Bring back the public art / concrete sheep and other animals

Some form of graffiti 'safe space' so the kids have somewhere to do it

Skate park and ramps

Potential for play area in disused football / play area in middle of park

Something to play on, maybe tennis. I used to play tennis in the park

Cycle storage

Lighting, seating, picnic area, somewhere for the kids

Bikes, football and skating

An outdoor gym, there used to be one

I would like the park to be better maintained.

I'd like to be able to go there with my son to take him to play on "baby swings" and as he grows up I'd like to take him to play football and observe nature.

Other

Make a difference to Sandyhills

Connections across the road

I think the proposal for Sandyhills Park and Tollcross Burn is ...

Kids love the water, can we add safe and easy connections to the water

Thinning the trees will help with perception of fear and crime

Really important to have MAINTENANCE

Connections into the water, so you feel close to the landscape but it will not be too dangerous or muddy

Shouldn't just be the burn restoration - there should be a multifunctional park created

If it can manage the water problems that would be great

Negative

I don't want the burn opened up

Possible rats and litter problems with this

Questions?



a Pidgin Perfect publication with Glasgow City Council, erz and EnviroCentre
© Pidgin Perfect 2013 | www.pidginperfect.com | studio@pidginperfect.com

All rights reserved. No part of this document may be reproduced or transmitted in any form or by any means, electronic or mechanical, including photocopying, recording, or by any information storage and retrieval system without express written permission from the author.