



# The Walled Garden, Speirs wharf

The  
Bothy  
Project



Project by: The Bothy Project  
Stalled Spaces Case Study, 2011-12



# About the project

**Location:** 27 Sawmillfield Street, Glasgow G4 9SJ

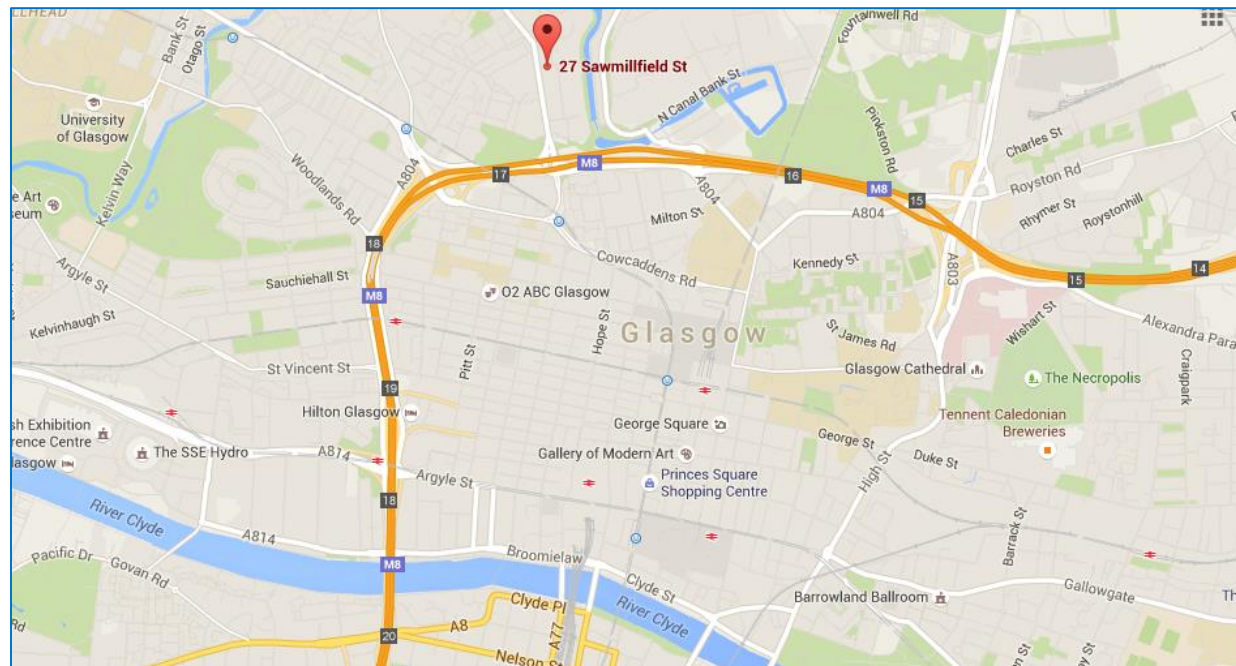
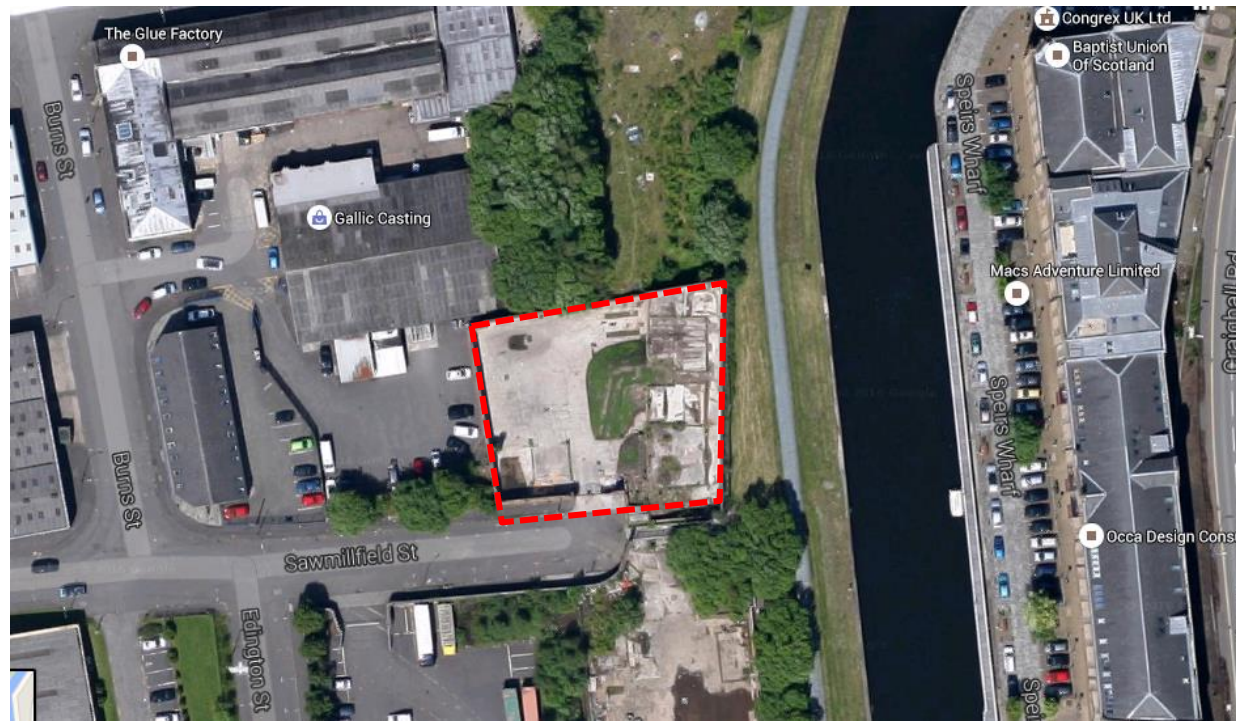
**Organisation:** The Bothy Project

**Partners:** Glasgow Sculpture Studios, The Glue Factory, Glasgow School of Art, Scottish Opera, RSAMD, National Theatre for Scotland and Impact Arts

**Type of Space:** Land earmarked for development but stalled

**Proposal:** Create walled garden with a multi-use pavilion providing a flexible performance and production space for the arts

**Funding:** Total project cost - £15,000



# Project Description

The proposal was to develop the site at 27 Sawmillfield Street into a walled garden with a multi-use pavilion providing a flexible performance and production space for the arts.

The garden was established through the freeform planting of wildflowers in cracks, corners and on top of the walls to create punctuations of colour and scent.

This unique performance space brought together the different creative community groups that use the industrial estate and surrounding area: Glasgow Sculpture Studios, The Glue Factory, Glasgow School of Art, Scottish Opera, RSAMD, National Theatre for Scotland and Impact Arts.

The idea was to provide a communal creative space for the area and encourage cross-disciplinary collaboration between the different user groups.

The Bothy Project was phased over two stages. The first stage included making the site accessible and secure and establishing the wildflower garden along with having an opening event. The second phase focused on designing and developing the temporary performance space.



For more information please  
contact:  
[stalledspaces@glasgow.gov.uk](mailto:stalledspaces@glasgow.gov.uk)  
or The Bothy Project via  
[http://www.thebothyproject.org/  
walled-garden/](http://www.thebothyproject.org/walled-garden/)





Before..





During..





After..