



**Glasgow City Council**

**Briefing Paper by Executive Director of Development and  
Regeneration Services**

**Contact: Jan Freeke**

**Phone: (0141) 287 8647**

**Glasgow City and Neighbourhoods  
Demographic Changes in 2001-2011  
Results from Analysis of 2001 and 2011 Census data – Release 2**

**Date of Issue: 15 September 2014**

***PLEASE NOTE THE FOLLOWING:***

*Any Ordnance Survey mapping included within this Report is provided by Glasgow City Council under licence from the Ordnance Survey in order to fulfil its public function to make available Council-held public domain information. Persons viewing this mapping should contact Ordnance Survey Copyright for advice where they wish to licence Ordnance Survey mapping/map data for their own use. The OS web site can be found at <http://www.ordnancesurvey.co.uk> " If accessing this Report via the Internet, please note that any mapping is for illustrative purposes only and is not true to any marked scale*

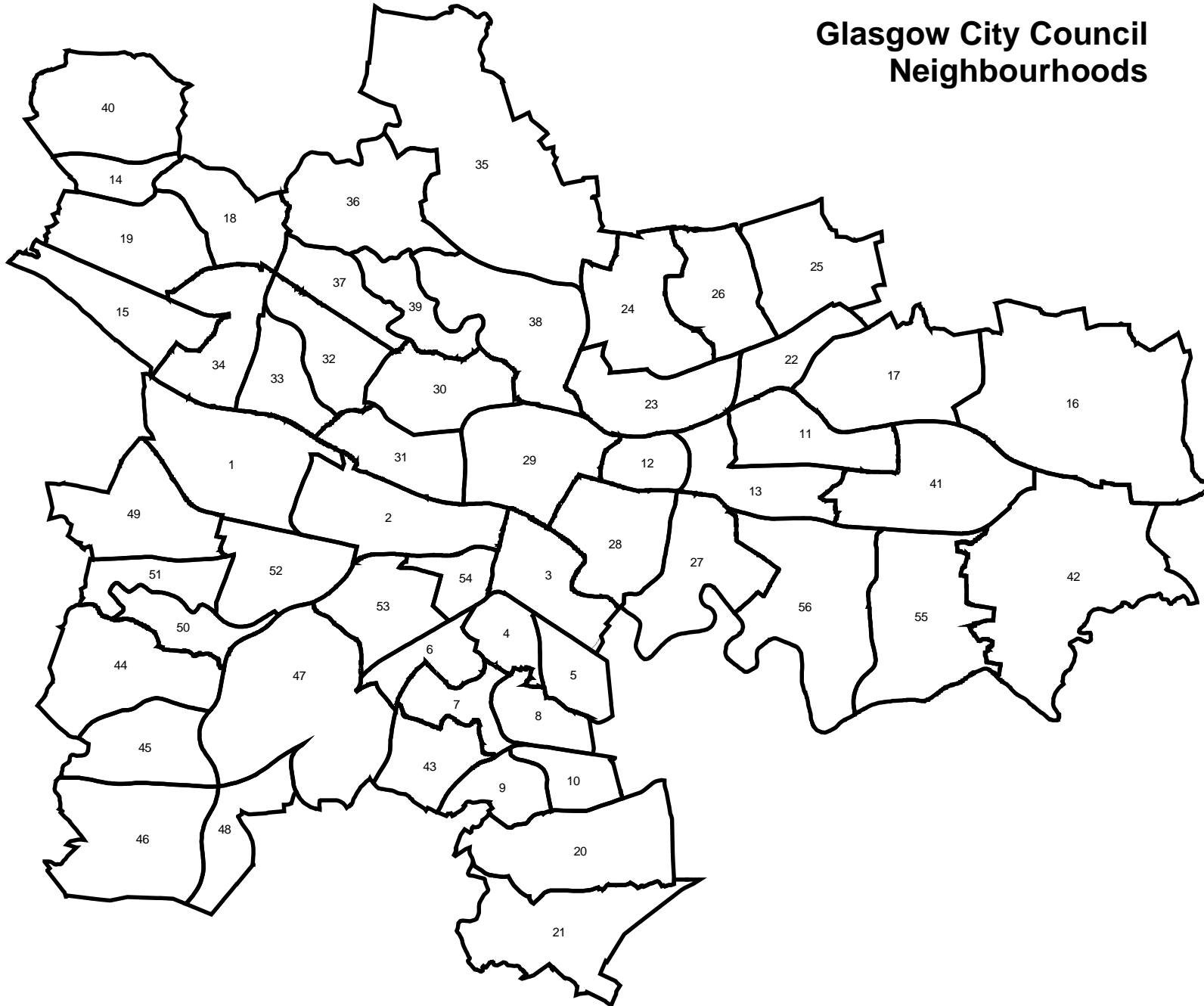
<b>CONTENTS</b>	page
1. Introduction	3
2. Main Results	6
3. Population and Households	8
4. Population and Deprivation	12
5. Population by Age	15
6. Population by Economic Status	19
7. Households by Type	22
8. Households by Tenure	27
APPENDIX	31

## 1. INTRODUCTION

- 1.1 National Records of Scotland (NRS) have published the 2011 Census Release 2 data. The final release, of the three remaining Release 2 Tables, took place on 9<sup>th</sup> April 2014. The availability of this data makes it possible to examine changes in 2001-2011 for the 56 neighbourhoods in Glasgow.
- 1.2 ***This paper is based on neighbourhoods in Glasgow.*** The 56 neighbourhoods, used in this analysis, were defined several years ago by DRS staff for the purposes of reporting to Local Housing Forums. At that time there were ten Local Housing Forums, with each Forum dealing with one of the City's ten Community Planning Partnership (CPP) areas. The CPP areas were considered too large to be meaningful when discussing local priorities for housing investment and regeneration. In consultation with Housing Associations, the CPP areas were sub-divided into areas, which people living in those areas would recognize as their neighbourhood (see page 5 for a map of the City's Neighbourhoods).
- 1.3 Compared with an analysis based on the City's 21 Multi Member Wards (MMWs), an analysis using the 56 neighbourhoods has the advantage of a more detailed geography. There is generally quite a level of variation ***within*** MMWs, e.g. with respect to population characteristics and deprivation levels. Therefore, if the analysis had been done for MMWs, in stead of for neighbourhoods, then much of the local detail would have been missed.
- 1.4 After a summary of main results, this paper has the following sections:
  - population and households
  - population and deprivation
  - population by age
  - population by economic status
  - households by type, and
  - households by tenure.
- 1.5 The present paper contains ***a section*** on population and deprivation. That section compares, by neighbourhood, the percentage of the population living in a deprived data zone in 2001 (with deprivation defined as per the 2004 SIMD, lowest 15%) and the percentage of the population living in a deprived data zone in 2011 (with deprivation defined as per the 2012 SIMD, lowest 15%).
- 1.6 An analysis of changes in Glasgow's population by ethnicity has not been included in this paper. This has already been covered in a separate paper "Population by Ethnicity in Glasgow – Estimates of Changes 2001-2011 – for Strategic Planning Areas and Neighbourhoods" (12 December 2013).

- 1.7 There are indications that the Roma population in Govanhill has not been fully enumerated and that, as a result of this, the Census population figure for Govanhill represents an undercount. The Council has raised its concern with NRS, who are investigating this issue.
- 1.8 When comparing changes by neighbourhood, the changes in the component are measured in relation to the total population or the total number of households in 2001, giving “**component contributions**” to total population or household change. ***The measurement of change in the component is not the main focus of the neighbourhood analysis, but rather the measurement of the contribution that the change in the component has had on the wider neighbourhood.***
- 1.9 E.g. when examining the changes in households by tenure, the change in the number of private rented households is divided by the **total** number of households in 2001. Doing otherwise, i.e. dividing by the number of **private rented** households in 2001, can result in small absolute changes showing as huge percentage changes for neighbourhoods, in which the private rented sector is very small in 2001.
- 1.10 The latter is less of an issue for comparisons at a City-wide level. Because percentage changes are easier to interpret, the comparisons between Glasgow City and Scotland have been done on that basis. Tables A1 and A2 (see Appendix) give, respectively, “percentage changes” and “component contributions” to total population or household change.
- 1.11 This paper contains maps with area profiles for 2011 in relation to:  
(1) population age (see map 5.1 on page 16),  
(2) population economic status (see map 6.1 on page 20),  
(3) household type (see map 7.1 on page 24), and,  
(4) household tenure (map 8.1 on page 28).  
These profiles (see Appendix, Tables A3.1 to A3.4) were derived from 2011 Census data using cluster analysis.
- 1.12 The remaining maps in this paper use the following colours: green to show increases and purple to show reductions. Exceptions are: (1) the area profiles for 2011 (see paragraph 1.11), (2) the maps on average household size (maps 3.3 and 3.4, on page 11), (3) the maps on deprivation (maps 4.1, 4.2 and 4.3, on pages 13 and 14) and (4) the maps on average age (maps 5.2 and 5.3, on page 17).

# Glasgow City Council Neighbourhoods



AREACODE	NEIGHBOURHOOD
1	Greater Govan
2	Ibrox / Kingston
3	Greater Gorbals
4	Govanhill
5	Toryglen
6	Shawlands / Strathbungo
7	Langside / Battlefield
8	King's Park / Mount Florida
9	Cathcart / Simshill
10	Croftfoot
11	Riddrie / Cranhill
12	Dennistoun
13	Haghill / Carntyne
14	Blairdardie
15	Yoker / Scotstoun
16	Easterhouse
17	Ruchazie / Garthamlock
18	Temple / Annesland
19	Knightswood
20	Castlemilk
21	Carmunnock
22	Blackhill / Hogganfield
23	Sighthill / Roystonhill / Germiston
24	Springburn
25	Robroyston / Millerston
26	Balornock/ Barmulloch
27	Parkhead / Dalmarnock
28	Calton / Bridgeton
29	City Centre / Merchant City
30	Hillhead / Woodlands
31	Yorkhill / Anderston
32	Hyndland / Dowanhill / Partick East
33	Broomhill / Partick West
34	Annesland / Jordanhill / Whiteinch
35	Lambhill / Milton
36	North Maryhill / Summerston
37	Kelvindale / Kelvinside
38	Ruchill / Possilpark
39	Maryhill Road Corridor
40	Drumchapel
41	Springboig / Barlanark
42	Baillieston / Garrowhill
43	Newlands / Cathcart
44	Pollok
45	Priesthill / Househillwood
46	South Nitshill / Darnley
47	Pollokshaws / Mansewood
48	Arden / Carnwadric
49	North Cardonald / Penilee
50	Corkerhill / North Pollok
51	Crookston /South Cardonald
52	Bellahouston / Craigton / Mossspark
53	Pollokshields West
54	Pollokshields East
55	Mount Vernon / East Shettleston
56	Tollcross / West Shettleston

© Crown Copyright. All Rights Reserved. Glasgow City Council 100023379

Development and Regeneration Services

229 George Street, Glasgow G1 1QU

Date: 30/06/2010

Scale: 1:95,000

Prepared By: AMACG

Ref:

## 2. MAIN RESULTS

2.1 The results presented in sections 3 to 8 include **seven main results** with potential implications for Council services:

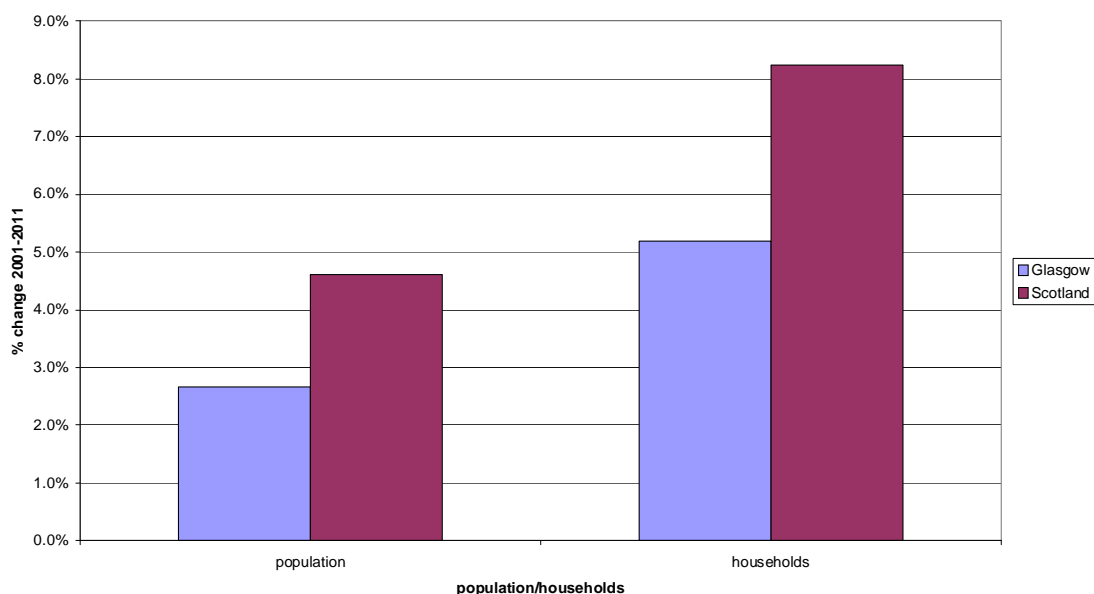
- 1) **the City's population rose in 2001-2011**, but at a lower rate than Scotland's population. Within Glasgow, there was a concentration of population increases in neighbourhoods in and around the City Centre.
- 2) **Glasgow's population has become younger, relative to the rest of Scotland**. But there is considerable variation in the average age of the population within the City. In City Centre neighbourhoods, the population has become younger. But the population has become older in some of the City's peripheral areas, including most of the City's peripheral housing estates, as well as in some of the "mainly owner occupied" housing areas.
- 3) **Glasgow's population has become less deprived**. In 2001, 53% of Glasgow's population lived in a deprived data zone. That percentage fell to 40% in 2011. Considerable improvements in rates of deprivation have taken place in the City Centre and in Glasgow North East.
- 4) **the number of Glasgow residents in employment has risen by 19%**, which is higher than the Scottish average (at 11%). Most of the increases have taken place in City Centre neighbourhoods, in areas east of the City Centre and in areas of Glasgow South West.
- 5) **more of Glasgow's population live in private rented housing**. The biggest increases have been in areas in and around the City Centre. The rise in private renting has been limited in the more deprived areas of the City.
- 6) compared to 1991-2001, **there has been a slowdown in the rate of household formation in the City** in 2001-2011. Although the number of single person households has continued to increase, the rate of growth was less than in the previous decade. In some areas of the City, average household sizes have increased.
- 7) **the number of family households has decreased, including the number of lone parent households with dependent children**. Within the City, numbers of lone parent families have reduced considerably in the most deprived areas, but numbers have risen in other parts of the City.

- 2.2 The results of the analysis, presented in this paper, indicate ***the considerable changes that have taken place in Glasgow between 2001 and 2011, in particular in relation to reduced deprivation levels.*** By considering the Census data at neighbourhood level, it is clear that the impact of this change has been different for the various areas in the City.
- 2.3 ***Reduced deprivation has had a considerable impact on Glasgow's (inner) East End. Areas east of the City Centre have seen sizable increases of the number of residents in employment.***
- 2.4 The above are only some of the 2011 Census results with, potentially, important implications for Council services. DRS staff will undertake further analysis of Census data, when new releases from NRS become available.
- 2.5 As part of this programme of analysis, DRS plans to prepare three topic reports on 2011 Census results. The three topics are: (1) Ethnic diversity in Glasgow, (2) the Glasgow Economy and (3) Housing in Glasgow.

### 3. POPULATION AND HOUSEHOLDS

#### City-wide Population and Household Change

Graph 3.1 - Population and Household Change 2001-2011 in Glasgow and in Scotland



3.1 Graph 3.1 shows that the population of Glasgow has increased by 2.7%, from 577,869 in 2001 to 593,245 in 2011 (see Appendix, Table A1). The rate of increase is lower than in the rest of Scotland. In Scotland the population rose by 4.6%.

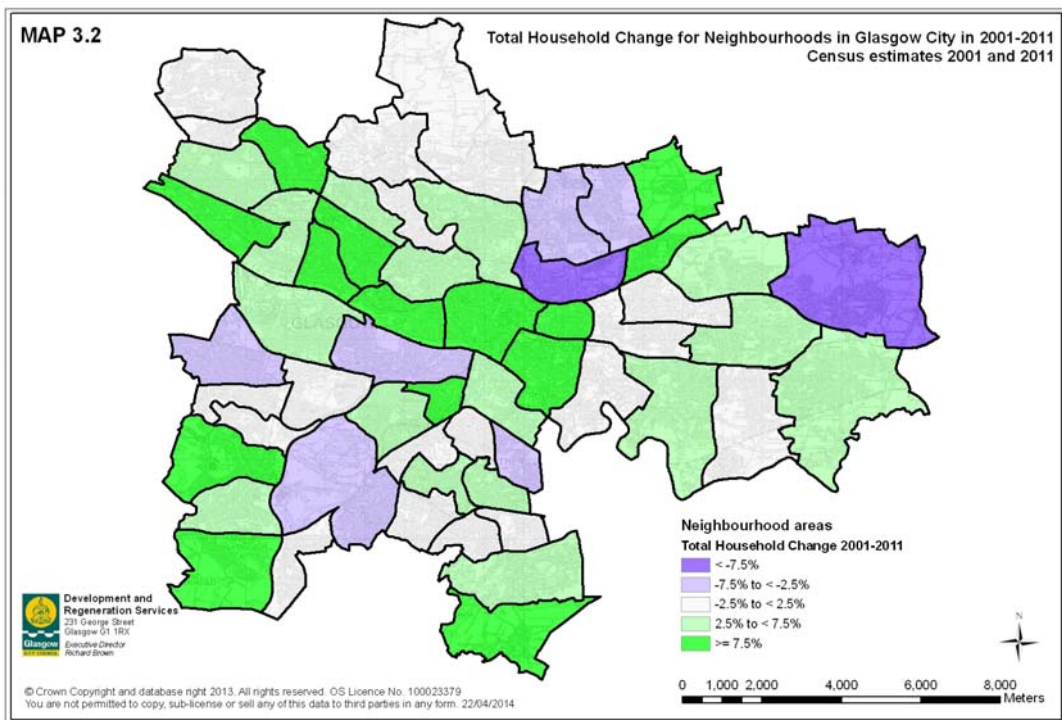
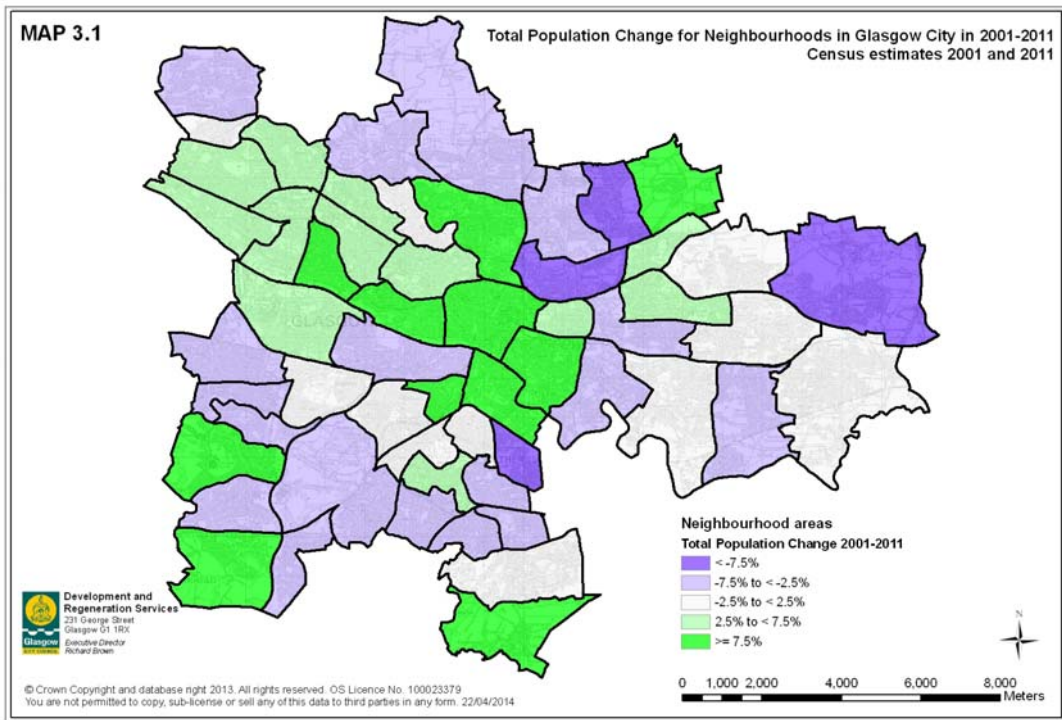
3.2 The number of households in Glasgow has increased by 5.2%, from 271,596 in 2001 to 285,693 in 2011. The rate of increase is lower than in the rest of Scotland. In Scotland the number of households rose by 8.2%.

#### Population and Household Change by Neighbourhood

3.3 It is clear, from Map 3.1 (see next page) and Table A4 (see Appendix), that the largest population increases took place in the following neighbourhoods: Broomhill and Partick West (+22%), Yorkhill and Anderston (+28%), City Centre and Merchant City (+36%) and Calton and Bridgeton (+28%). In the South and South West of the City, there was a sizable population rise in the neighbourhoods Pollok (+22%), South Nitshill and Darnley (+31%) and Carmunnock (+24%).

3.4 Easterhouse had the highest rate of population loss (-17%), to be followed by Sighthill, Roystonhill and Germiston (-14%), Balornock and Barmulloch (-9%) and Toryglen (-9%).

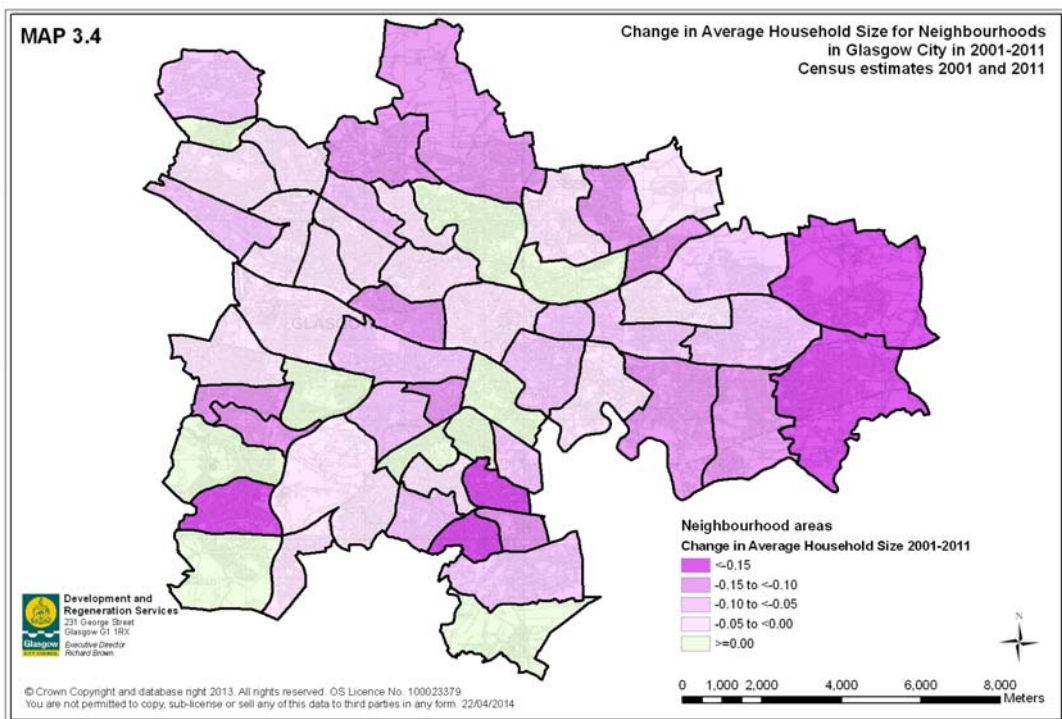
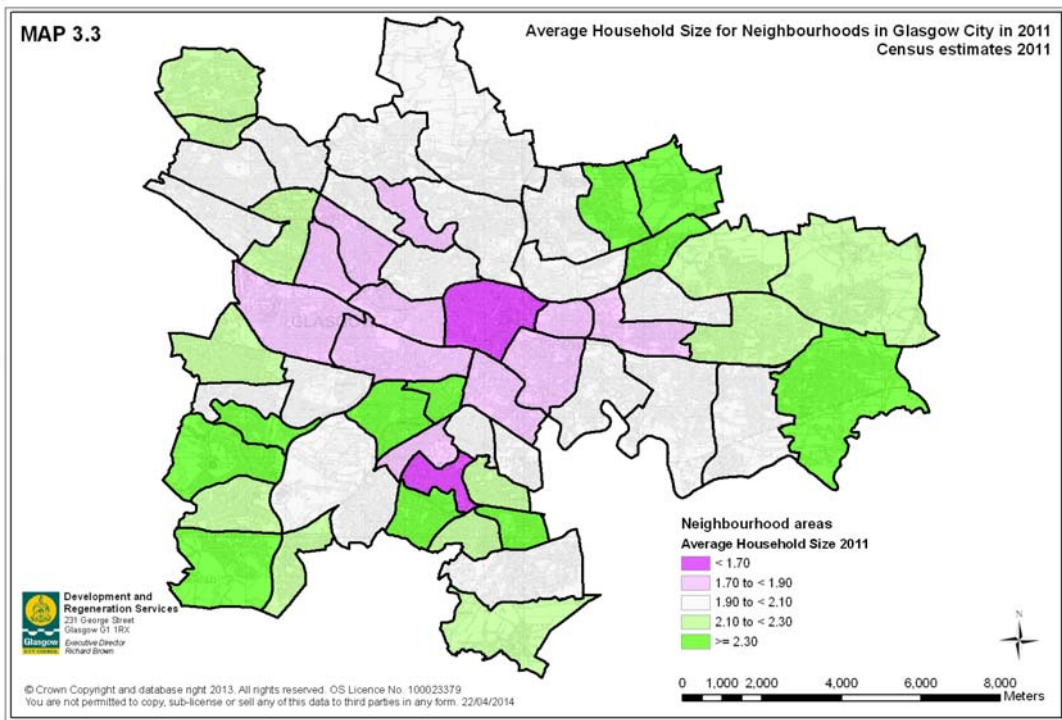




- 3.5 The spatial pattern of the changes in the number of **households** is very similar to the spatial pattern of the changes in the **population** by neighbourhood, as is clear from a comparison of Maps 3.1 and 3.2 (see previous page).
- 3.6 The population loss for Easterhouse is partly due to a boundary change (Cardowan by Stepps, Boundaries Amendment Order 2009). Without this boundary change, the population loss for Easterhouse would have been 10%, rather than 17%.

### **Changes in Average Household Size**

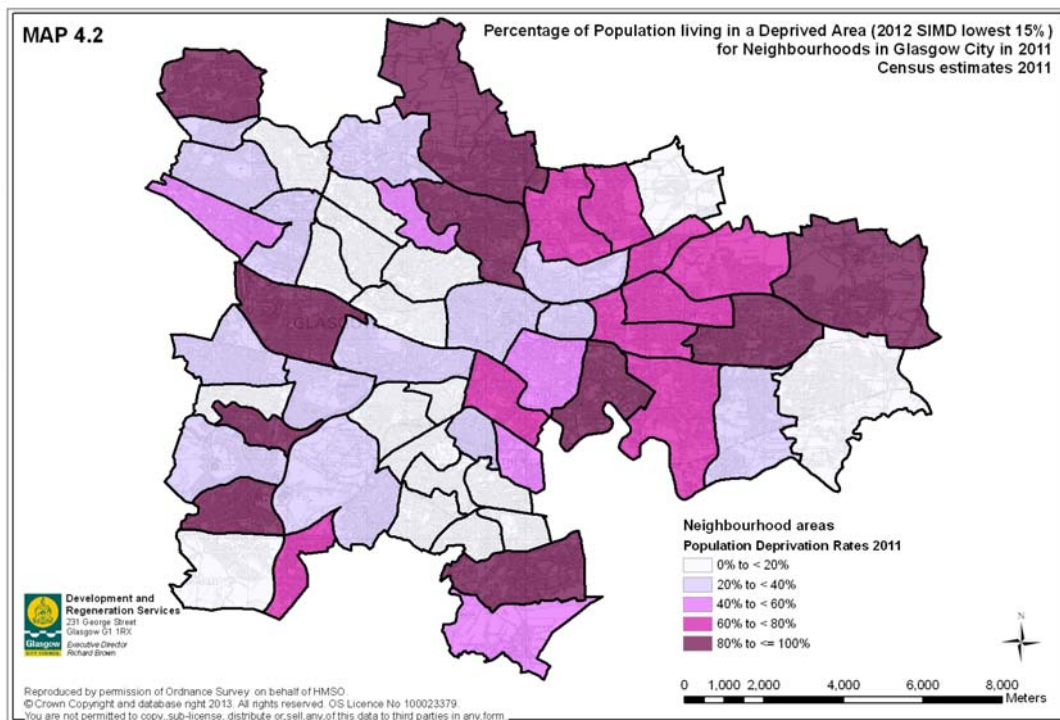
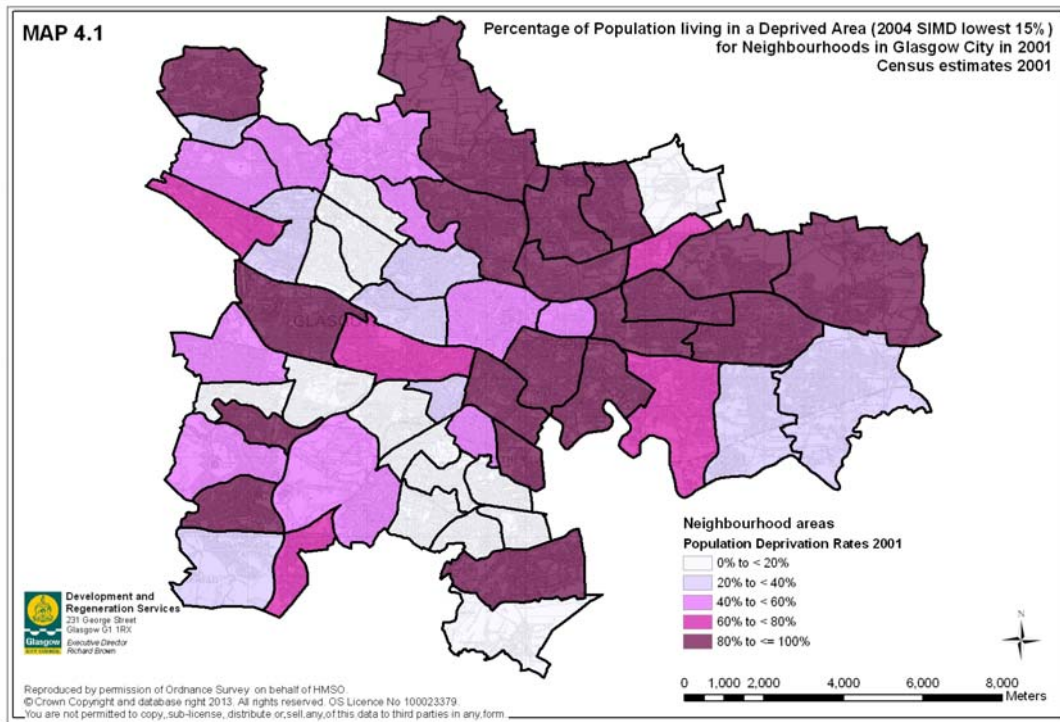
- 3.7 In Glasgow the average household size fell by 2.9%, from 2.08 in 2001 to 2.02 in 2011. In Scotland the average household size fell by 3.5%, from 2.27 in 2001 to 2.19 in 2011.
- 3.8 There is considerable variation in the average household size in 2011 and in changes to the average household size in 2001-2011, for neighbourhoods within the City. This is clear from Maps 3.3 and 3.4 (see next page) and Table A5 (see Appendix). In those maps, the green colour indicates a higher level of, or an increase in, the average household size and the pink colour indicates a lower level of, or a reduction in, the average household size.
- 3.9 The average household size is lowest in City Centre and Merchant City (at 1.60). Smaller households are more prevalent in neighbourhoods along the Clyde Corridor as well as in Shawlands/Langside. Households tend to be larger in Robroyston/Blackhill, Baillieston, Pollokshields, Newlands/Croftfoot and Greater Pollok.
- 3.10 Between 2001 and 2011, household sizes have **increased** in Blairdardie, Ruchill/Sighthill, Gorbals/Shawlands, Bellahouston, Pollok, South Nitshill/Darnley and Carmunnock. The largest **reductions** in average household size have taken place in Easterhouse, Baillieston, Kingspark/Cathcart and Priesthill/Househillwood.

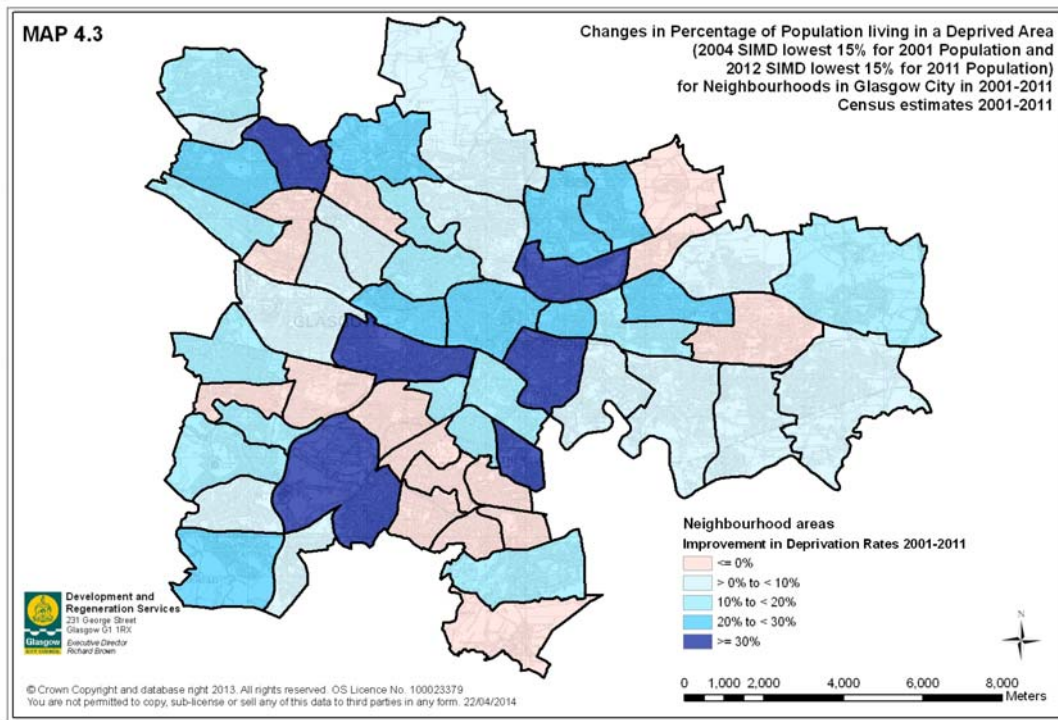


#### 4. POPULATION AND DEPRIVATION

- 4.1 The Scottish Government (SG) has assessed Scotland's 6,505 data zones in terms of the presence of deprivation, using various indicators on income, access, education, housing, crime, employment and health. The Scottish Index of Multiple Deprivation (SIMD) has ranked these data zones. For practical purposes a data zone is classified as "deprived" if it is within the lowest 15%, i.e. if the data zone is among the bottom 976 out of 6,505 data zones in Scotland.
- 4.2 The first SIMD was published in 2004. The SG has updated the SIMD on a regular basis, using more up-to-date statistics. Comprehensive updates were published in 2006, 2009 and 2012. By comparing these Indices, it is possible to monitor over time whether areas are getting more or less deprived, *relative to other areas in Scotland*.
- 4.3 According to the 2004 SIMD, 374 of Glasgow's 694 data zones (or 53.9%) were "deprived", using the definition of being in the lowest 15%. Since then there has been a considerable improvement. According to the 2012 SIMD, 288 of Glasgow's 694 data zones (or 41.5%) were "deprived", which is a significant reduction in the number of "deprived" data zones in Glasgow.
- 4.4 For an analysis of population change in 2001-2011, the populations can be matched with the version of the SIMD that is closest to the date of the population estimate. Using the 2004 SIMD and applying this to the 2001 Census population estimates, results in an estimated 53.6% of Glasgow's population living in a "deprived" data zone (309,683 out of 577,869). Similarly, using the 2012 SIMD and applying this to the 2011 Census population estimates, gives an estimated 40.1% of Glasgow's population living in a "deprived" data zone (238,029 out of 593,245).
- 4.5 In this section the population deprivation rates in 2001 are compared with the population deprivation rates in 2011 *for each neighbourhood* (see Appendix, Table A6). Maps 4.1 and 4.2 (see next page) give, respectively, for Glasgow's neighbourhoods the percentage of the **2001 population** living in a deprived area (based on 2004 SIMD, lowest 15%) and the percentage of the **2011 population** living in a deprived data zone (based on 2012 SIMD, lowest 15%). In the maps, "dark red" indicates a high level of deprivation.
- 4.6 Map 4.1 shows a sizable concentration of deprivation in Glasgow North, North East, Inner East and Inner South, as well as in Drumchapel, Greater Govan, Corkerhill, Priesthill and Castlemilk. Map 4.2 shows that the concentration of deprivation in Glasgow North, North East, Inner East and Inner South has reduced considerably. Concentrations of deprivation remain in Parkhead, Lambhill/Ruchill and Easterhouse/Springboig.



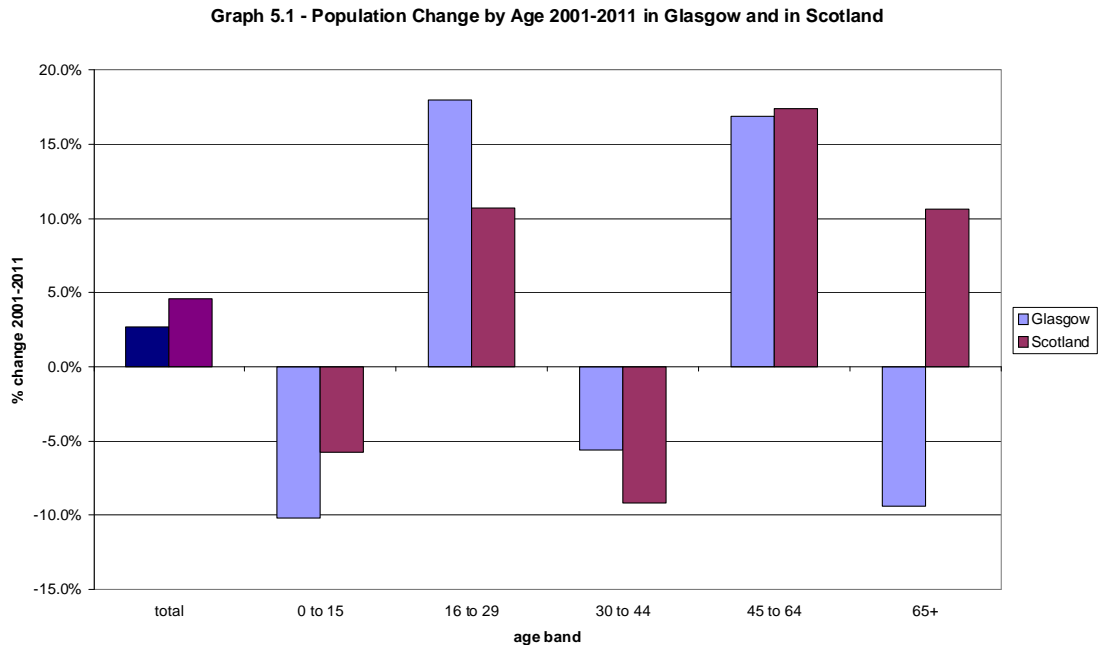




- 4.7 Map 4.3 (see above) shows the neighbourhoods where the share of the population who live in deprived data zones has changed between 2001 and 2011. The blue colour indicates improvements, i.e. reductions in deprivation rates. Major improvements have taken place in and around the City Centre (the area from Toryglen to Ibrox, Yorkhill, Calton, Sighthill and Springburn), Glasgow North West (the area from Knightswood to North Maryhill and Summerston) and Glasgow South West (the area from Pollokshaws to South Nitshill and Darnley).
- 4.8 Table A6 in the Appendix shows a big rise, from 0% to almost 50%, in the deprivation rate for Carmunnock. This, however, is not of significance. The Carmunnock neighbourhood consists of two data zones. The SIMD score for one of these data zones worsened slightly and, as a result of this, that data zone moved from just above to just below the deprivation boundary (defined as the lowest 15% SIMD).

## 5. POPULATION BY AGE

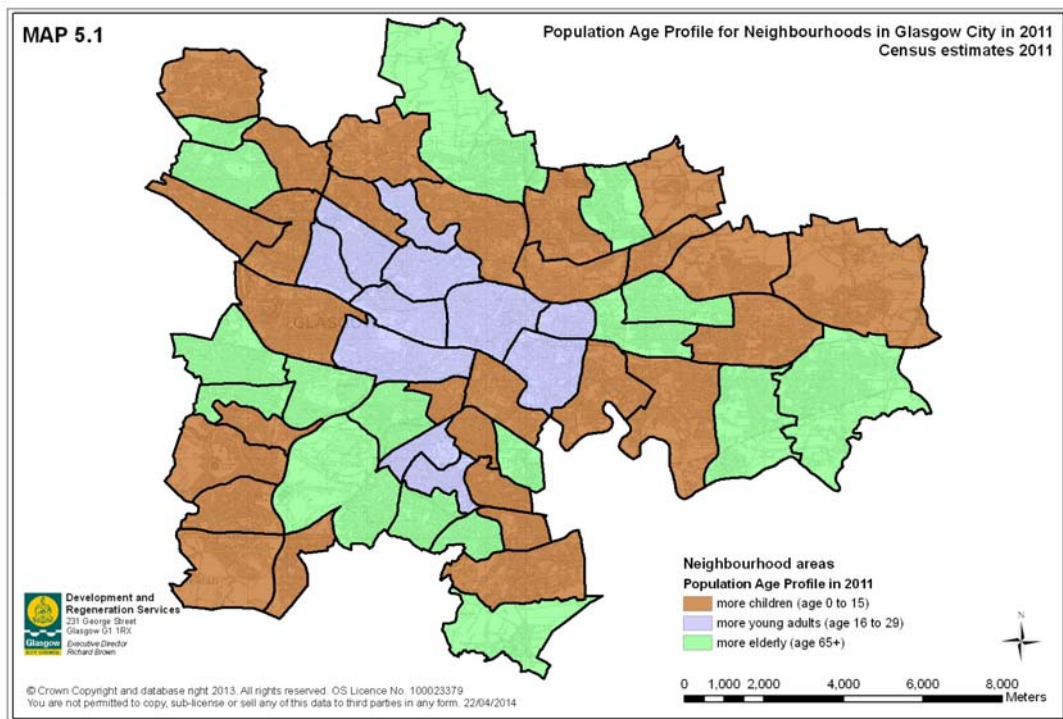
### City-wide Population Change by Age



- 5.1 The number of children (age 0 to 15) in **Glasgow** fell by 10.2%, from 106,498 in 2001 to 95,627 in 2011 (see Graph 5.1 above, and Appendix, Table A1). The number of children in **Scotland** fell by 5.7%.
- 5.2 The number of adults aged 16 to 64 in **Glasgow** rose by 9.1%, from 380,679 in 2001 to 415,453 in 2011. In **Scotland** the number of adults aged 16 to 64 in Scotland rose by a lower percentage (6.2%). It should be noted that the main reason why the growth rate in Glasgow is higher than the national rate is a rise of 18.0% in the number of adults age 16-29 in Glasgow (in Scotland: 10.7%).
- 5.3 The number of adults aged 65 and over in **Glasgow fell** by 9.4%, from 90,692 in 2001 to 82,165 in 2011. The share of this age group in the total population **fell** from 15.7% in 2001 to 13.9% in 2011. In **Scotland**, the population aged 65 and over **rose** by 10.6% and the share of this age group in the total population **rose** from 15.9% in 2001 to 16.8% in 2011.

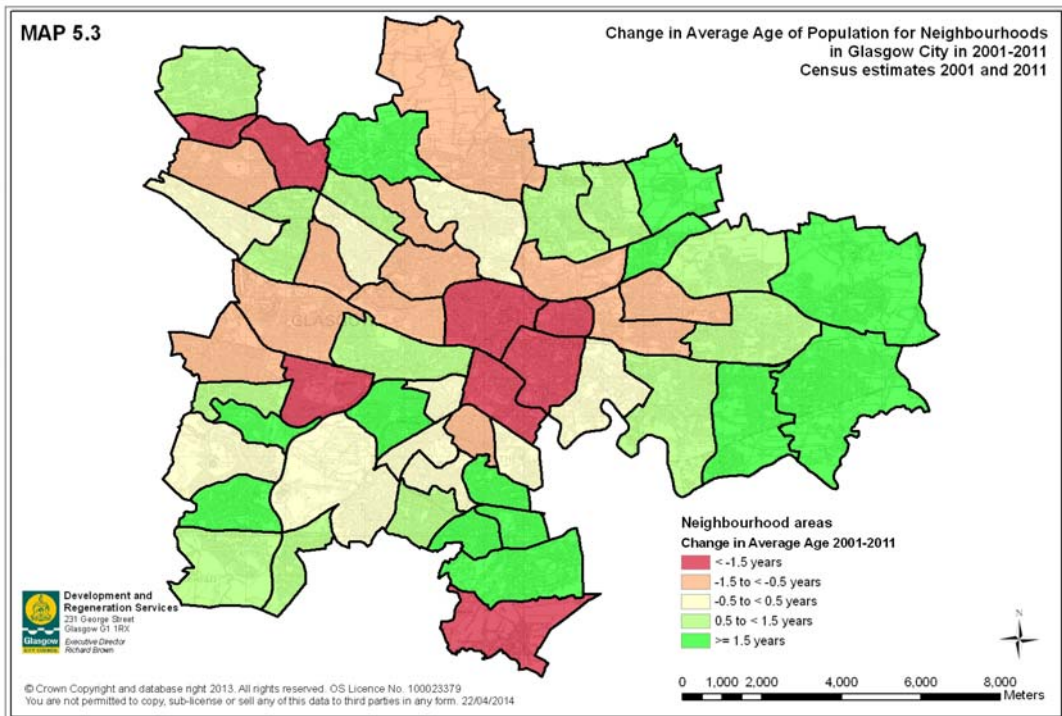
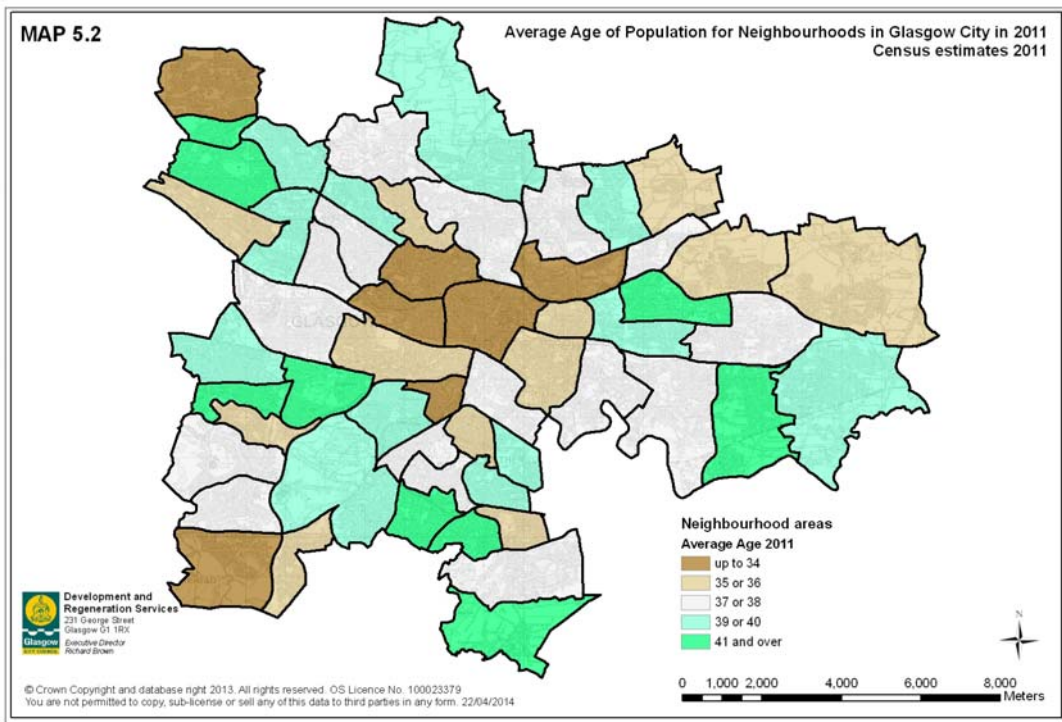
### Population Change by Age for Neighbourhoods

5.4 Map 5.1 below gives the age profile for neighbourhoods in Glasgow at 2011. There are higher numbers of **young adults** (age 16 to 29) in the Inner City and in Shawlands/Langside (the grey areas in Map 5.1). Higher numbers of **elderly** are found in the green areas: Glasgow South (the area from Cardonald to Cathcart, Carmunnock and Toryglen) and in Glasgow North (Mount Vernon/Baillieston, Haghill/Riddrie, Balornock, Lambhill/Milton and Knightswood/Blairdardie). There are higher numbers of **children** in the brown areas: Greater Govan, Greater Pollok, the area from Gorbals to Castlemilk, Parkhead/Tollcross, the area from Ruchill to Easterhouse, the area from Anniesland to Scotstoun and Drumchapel.



5.5 In Maps 5.2 and 5.3 (see next page), brown or red indicates a younger average age or a change to a younger age. Green indicates an older average age or a change to an older age.



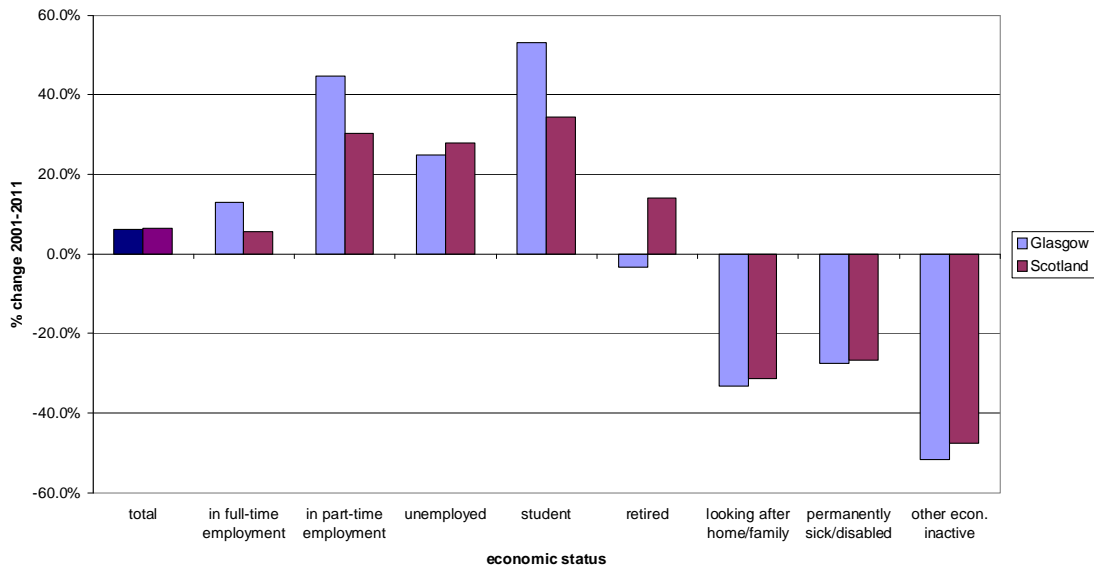


- 5.6 There are strong similarities between the patterns in Map 5.1 (see page 16) and Map 5.2 (see page 17). The latter map shows the average age of the population for neighbourhoods, in 2011 (see also Appendix, Table A7). The relatively younger age for the population of the neighbourhoods in and around the City Centre reflects the higher numbers of young adults (age 16 to 29) living there. The lower average age for Drumchapel, South Nitshill and Pollokshields East is associated with higher numbers of children. The higher average age for Knightswood, Riddrie, Mount Vernon, Crookston/Bellahouston, Cathcart and Carmunnock is associated with higher numbers of elderly in those areas.
- 5.7 Map 5.3 (see previous page) shows the changes, in 2001-2011, to the average age for the population in the neighbourhoods.
- 5.8 The population in the City Centre and in the three neighbourhoods to the east of the City Centre (Dennistoun, Calton and Gorbals) has become younger. The same is true for Blairdardie, Temple and Anniesland, Bellahouston/Craigton/Mosspark and Carmunnock. In some of these areas, this change may be due to the impact of Right-To-Buy, as younger households are buying former Council-houses which, in the past, would be allocated to older households.
- 5.9 There has been a change to an older population in some of the more deprived areas, i.e. Easterhouse, Priesthill/Househillwood and Castlemilk, and in some of the higher owner occupation areas, i.e. Robroyston, Mount Vernon/Baillieston, Kingspark/Cathcart and Pollokshields West.

## 6. POPULATION BY ECONOMIC STATUS

### City-wide Population Change by Economic Status

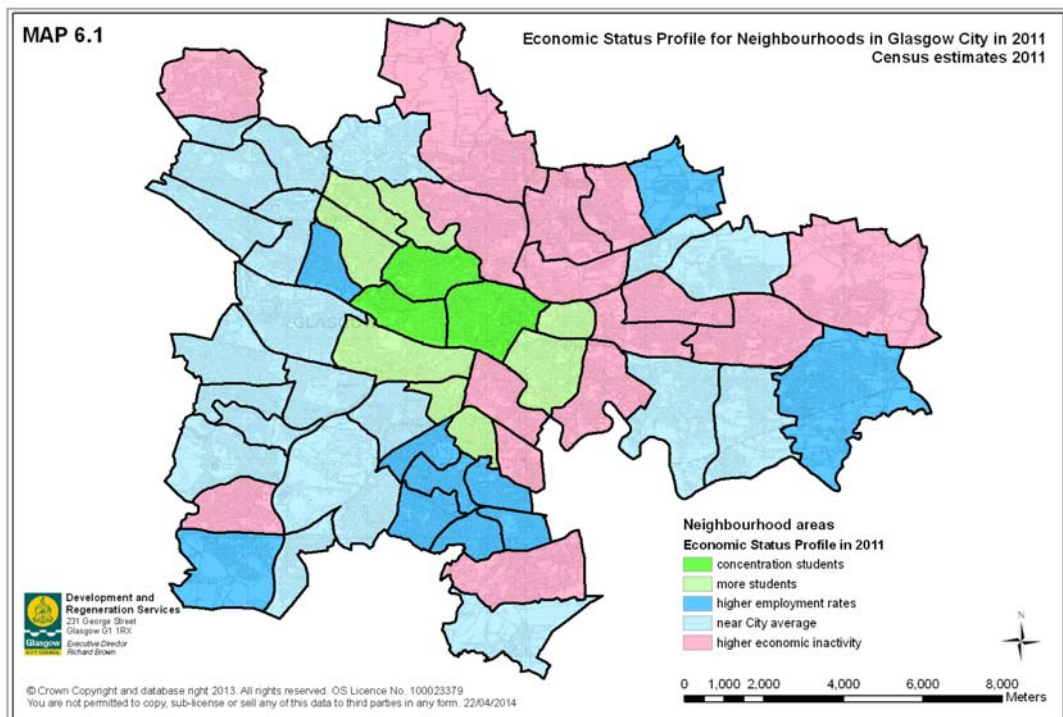
Graph 6.1 - Change in Population (Age 16-74) by Economic Status 2001-2011 in Glasgow and in Scotland



- 6.1 Published statistics from the 2011 Census give a breakdown of the population age 16-74 by economic status. Graph 6.1 above compares, for Glasgow City and Scotland, the percentage changes for the economic status categories (see Appendix, Table A1).
- 6.2 The overall population change for the age-group 16 to 74 is comparable between Glasgow (+6.2%) and Scotland (+6.4%). For both Glasgow and Scotland, the number of people in employment or studying has increased, and the number of people looking after home/family, permanently sick/disabled or “other economically inactive” has reduced (see Graph 6.1).
- 6.3 In 2001-2011 Glasgow has seen a higher rate of increase for the people in employment and/or studying, as compared with the Scotland figures. The number of people of age 16-74 with “retired” as their economic status, has fallen in Glasgow, but has risen in Scotland.

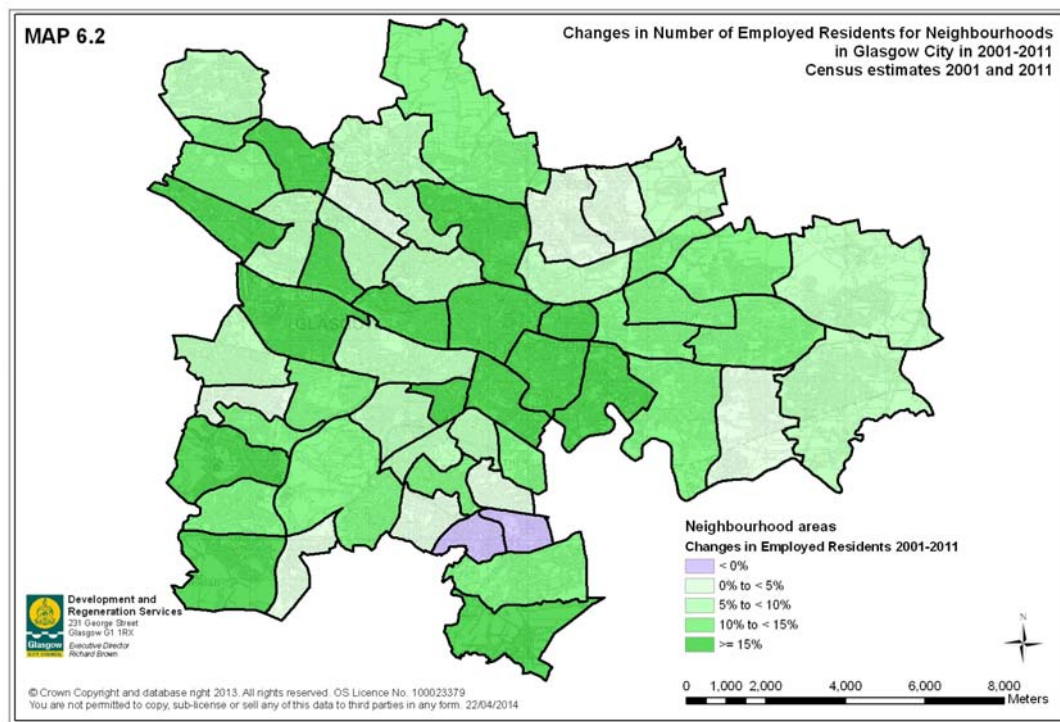
### Population Change by Economic Status for Neighbourhoods

6.4 Map 6.1 below gives, for the population in Glasgow's neighbourhoods, the economic status profile in 2011. The neighbourhoods in or around the City Centre contain more students (the green areas in the map). A comparison of Map 6.1 and Map 4.2 shows a strong relationship between higher rates of economic inactivity and higher rates of deprivation.



6.5 The number of full-time students living in Glasgow has increased from around 42,000 in 2001 to around 64,000 in 2011. There are concentrations of students in certain areas. In the seven neighbourhoods Maryhill Road Corridor, Kelvindale, Hyndland, Hillhead, Yorkhill, City-Centre and Calton the share of students in the population age 16-74 in 2011 is over 20%. In City Centre and Merchant City students make up almost 50% of the population age 16-74.

6.6 To analyse changes in the number of employed residents, it would be more appropriate to relate this to the age-group 16 to 64, rather than the age-group 16 to 74, as most of the age group 65-74 will be retired. However, data on economic status for the age-group 16-64 is unavailable from release 2 of the 2011 Census. Another potentially distorting factor is the number of students. Paragraph 6.5 indicated that the number of students can have a significant impact on particular neighbourhoods. Considering these two factors, it has been decided to relate the change in the number of employed residents to the number of people age 16-74 at 2001, **excluding** retired people and students.



6.7 Map 6.2 above shows the changes in the number of employed residents (see also Table A8 in Appendix). The changes have been calculated in terms of the “component contribution” from employed residents to the change in the total population (age 16-74, excluding retired people and students). The map shows that the number of employed residents has risen significantly in the City Centre/Inner East area, but also in some other areas, e.g. Pollok and South Nitshill/Darnley. It is not surprising that the spatial pattern of these changes is related to the spatial pattern of changes in deprivation rates (see Map 4.3).

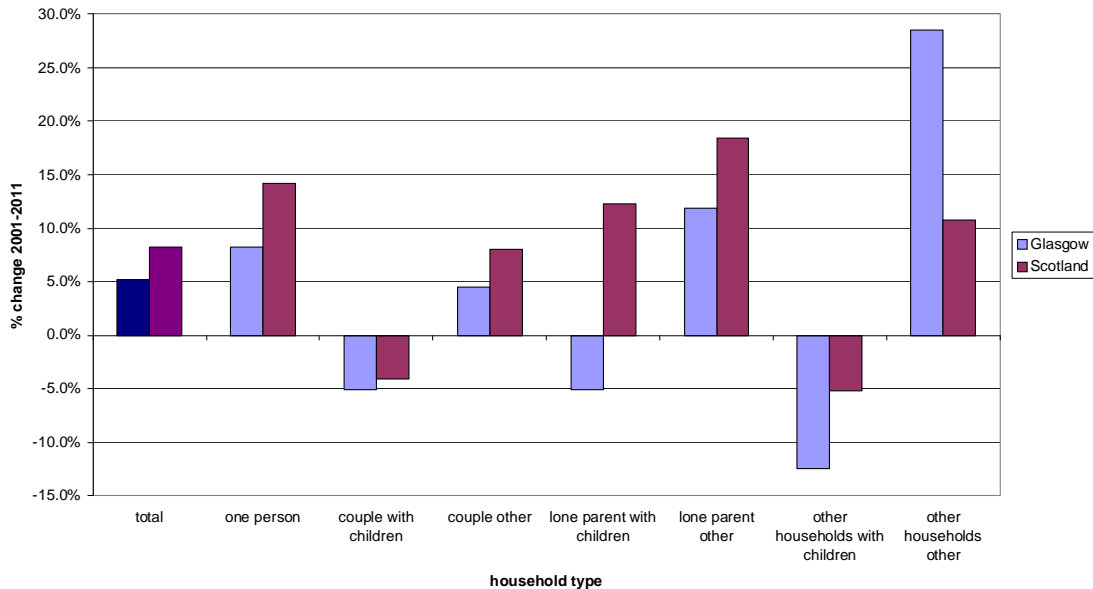
6.8 Cathcart/Simshill and Croftfoot are the only two neighbourhoods in Glasgow, where the number of employed residents has reduced since 2001. By way of contrast, the number of employed residents rose significantly in nearby Castlemilk (a component contribution of over 14%).



## 7. HOUSEHOLDS BY TYPE

### City-wide Changes in Households by Type

Graph 7.1 - Change in Number of Households by Type 2001-2011 in Glasgow and in Scotland



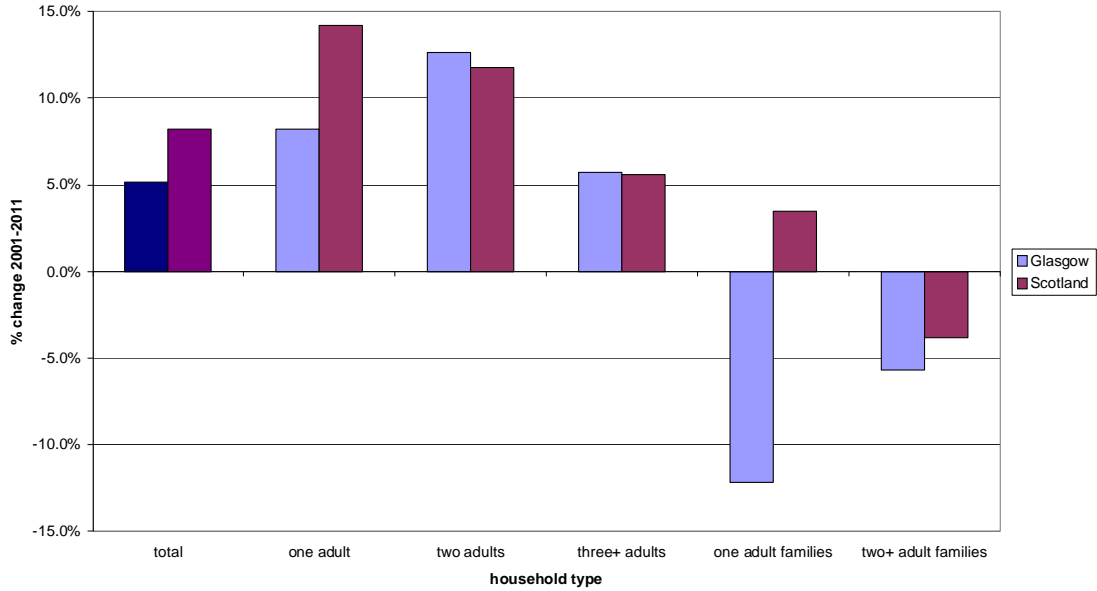
7.1 The published Census Tables recognize two different classifications of household types (see Appendix, Table A1). One set of Tables incorporates relationships within the household (e.g. couple family with dependent children and lone parent households with all children non-dependent). In the other set of Tables, households are categorized simply on the basis of the number of children (age 0 to 15) and the number of adults (age 16+, with some distinction between adults of pensionable or non-pensionable age). Graph 7.1 above gives the results of the Glasgow/Scotland comparison, using the first classification. Graph 7.2 (see next page) gives the results of the Glasgow/Scotland comparison using the second classification.

7.2 Graph 7.1 shows that the rate of change for one-person households in Glasgow (at 8%) is lower than in Scotland (at 14%).

7.3 The reduction in the number of family households in 2001-2011 is related to the fall in the number of children (by 10.2% in Glasgow and by 5.7% in Scotland). **Of particular importance is the 5% fall in the number of lone parent households with dependent children in Glasgow**, especially compared with a 12% increase for lone parent households in Scotland.

7.4 The sizable rise of **all-student households** in Glasgow is responsible for a higher rate of change in the number of “other households other” (with no children) in Glasgow (at 29%, considerably above the Scottish rate, at 11%).

Graph 7.2 - Change in Number of Households by Type 2001-2011 in Glasgow and in Scotland

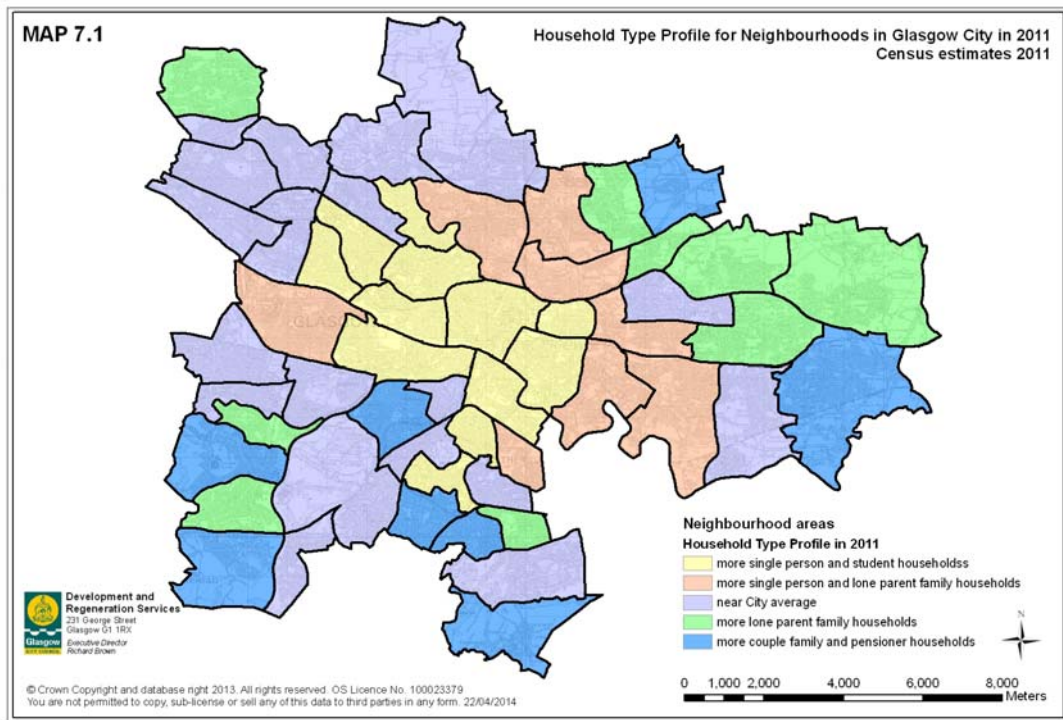


7.5 Graph 7.2 is based on the second classification, which groups households by type, without taking relationships within the household into account. Graph 7.2 shows that the lower household growth for Glasgow is due to a lower rate of growth for one adult households and **a sizable fall in the number of one adult families**. The latter can be considered as a sub-category of the lone parent households.

7.6 The reduction in the number of lone parent households with dependent children by 5% (see Graph 7.1) and in the number of one adult families by 12% (see Graph 7.2) is a significant change relative to the 1991-2001 period, when the number of one adult families rose by 19% in Glasgow.

## Changes in Households by Type for Neighbourhoods

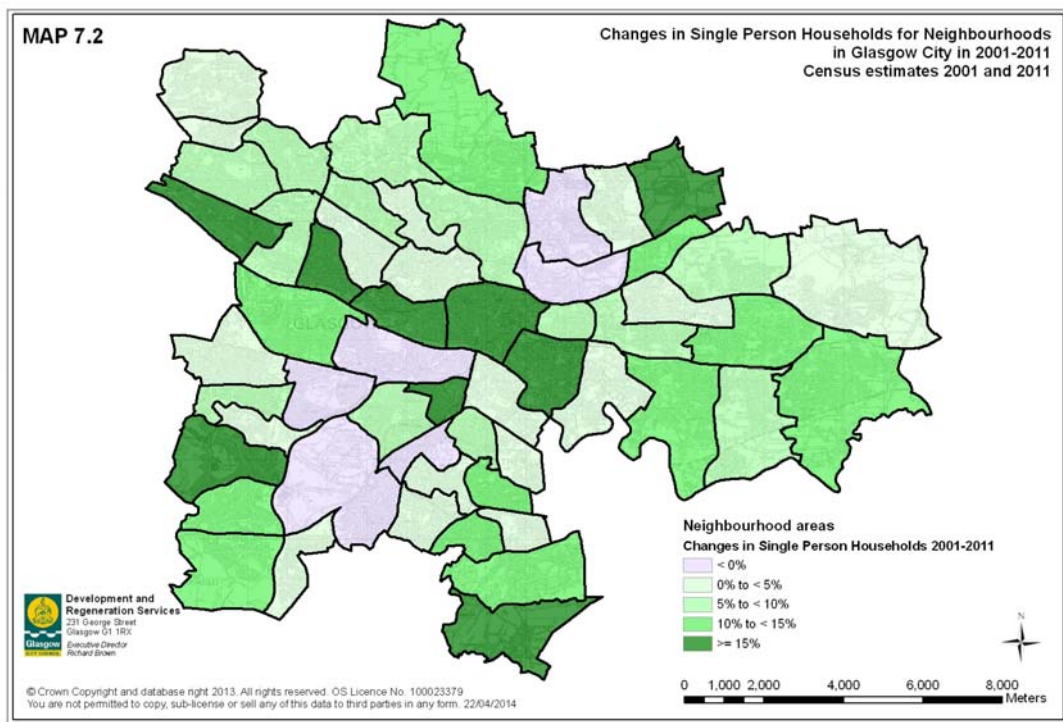
- 7.7 Map 7.1 gives a household type profile for Glasgow's neighbourhoods, in 2011. The neighbourhoods in or around the City Centre (the yellow area in the map) contain more single person and all-student households. There is a relationship between higher rates of lone parent families (the brown and green areas in Map 7.1) and higher deprivation rates (see Map 4.2).



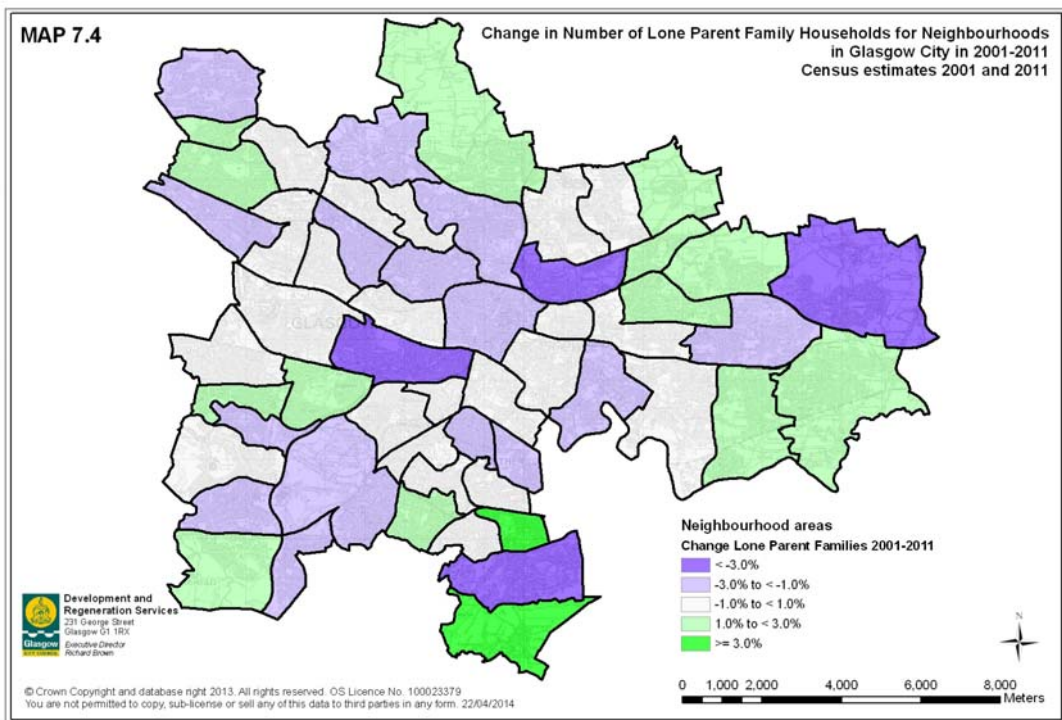
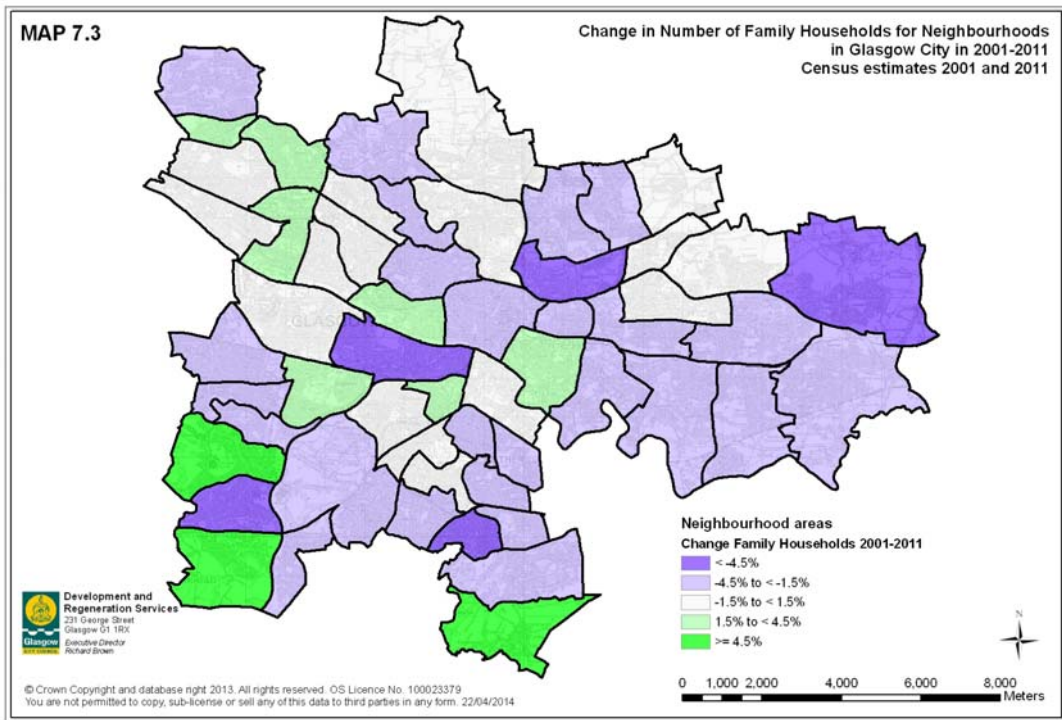
- 7.8 Maps 7.2, 7.3 and 7.4 (see next pages) show the changes in (1) the number of single person households, (2) the total number of family households (i.e. all households with dependent children) and (3) the number of lone parent households with dependent children. Again, the changes have been calculated as the “component contribution” to the total household change (see Appendix, Tables A9 to A11).



- 7.9 Map 7.2 shows that there have been rises in the numbers of **single person households** in the neighbourhoods north of the river Clyde, from Scotstoun to Calton. Other areas are Glasgow East (Tollcross, Springboig and Baillieston), Robroyston, Greater Pollok, Pollokshields East, Cathcart, Castlemilk and Carmunnock.
- 7.10 Numbers of single person households have reduced in the Springburn/Sighthill area, the Ibrox/Bellahouston/Pollokshaws area and Shawlands.



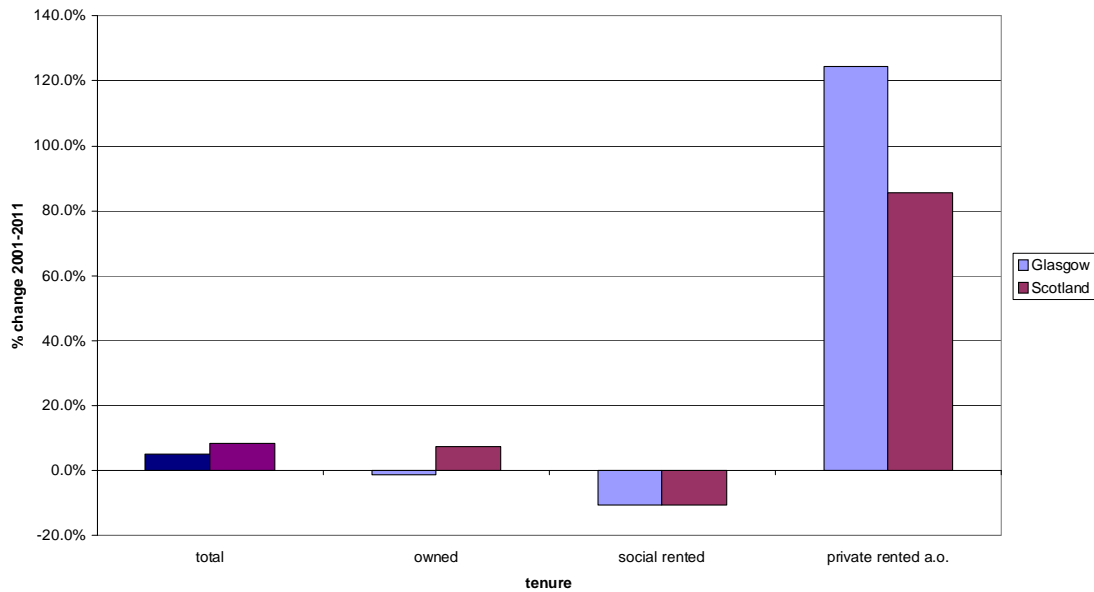
- 7.11 Map 7.3 (see next page) shows that **family households** have increased in South Nitshill, Pollok, Bellahouston, Pollokshields East and Carmunnock, as well as in parts of Glasgow North-West (Blairdardie to Anniesland), Yorkhill and Calton. The largest reductions have been in some of the more deprived areas, i.e. Easterhouse, Sighthill, Ibrox and Priesthill.
- 7.12 **Lone parent family households** are a sub-category of family households. Map 7.4 (see next page) shows that the reduction of family households in some of the more deprived areas of Glasgow, is also reflected in fewer lone parent family households (e.g. in Easterhouse and Castlemilk). But there have been increases for other areas: Carmunnock, Croftfoot, Crookston/Bellahouston, South Nitshill/Darnley, Robroyston/Blackhill/Riddrie, Lambhill, Blairdardie/Knightwood and Mount Vernon/Baillieston. This suggests that the relationship between deprivation rate and numbers of lone parent families may have weakened since 2001.



## 8. HOUSEHOLDS BY TENURE

### City-wide Changes in Households by Tenure

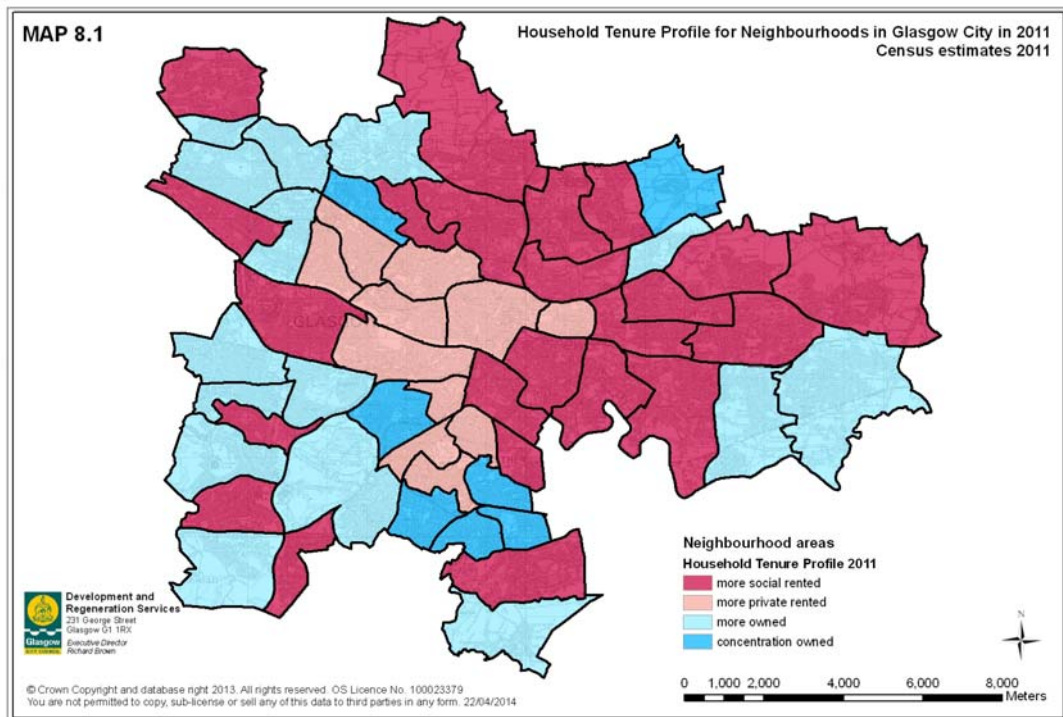
Graph 8.1 - Changes Number of Households by Tenure 2001-2011 in Glasgow and in Scotland



- 8.1 Graph 8.1 shows that there have been significant changes in tenure for Glasgow, particularly in relation to the private rented sector (see also Appendix, Table A1).
- 8.2 Owner occupied households in Glasgow have reduced by 1.2% (from 131,828 in 2001 to 130,217 in 2011). This compares with an increase for Scotland of 7.2%.
- 8.3 Social rented households have reduced at the same rate (-10.6%) for both Glasgow and Scotland in 2001-2011. In Glasgow the number of social rented households has fallen from 117,183 in 2001 to 104,811 in 2011.
- 8.4 Private rented households (including those living rent-free) have increased by 124% in Glasgow (from 22,585 in 2001 to 50,665 in 2011) and by 86% in Scotland.

## Changes in Households by Tenure for Neighbourhoods

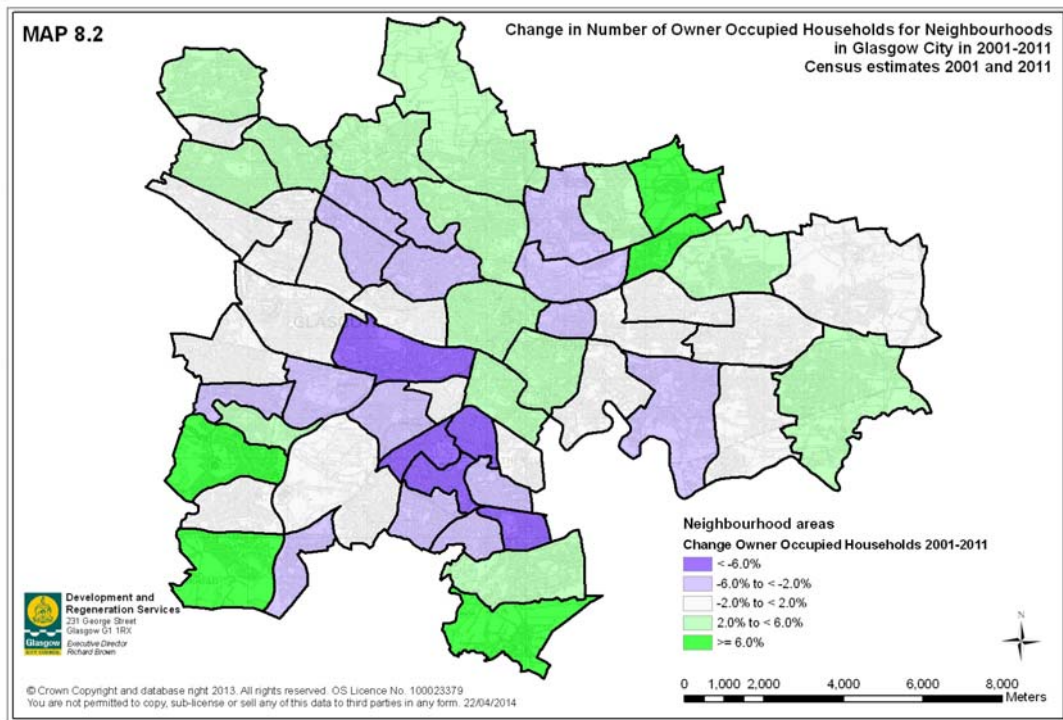
- 8.5 Map 8.1 gives a household tenure profile for neighbourhoods in Glasgow in 2011. Private rented households are concentrated in the pink areas of the map: City Centre neighbourhoods and Shawlands/Langside, which areas are generally not associated with deprivation. As expected, the areas with more social rented housing (the red areas in the map) tend to have higher deprivation rates (compare Maps 4.2 and 8.1).



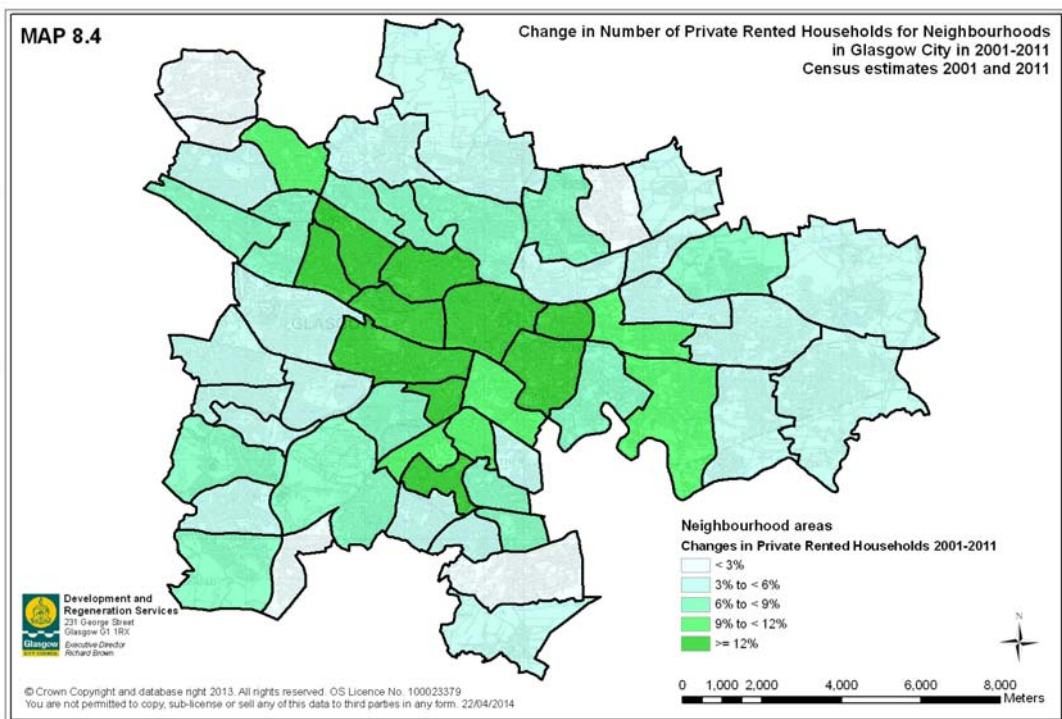
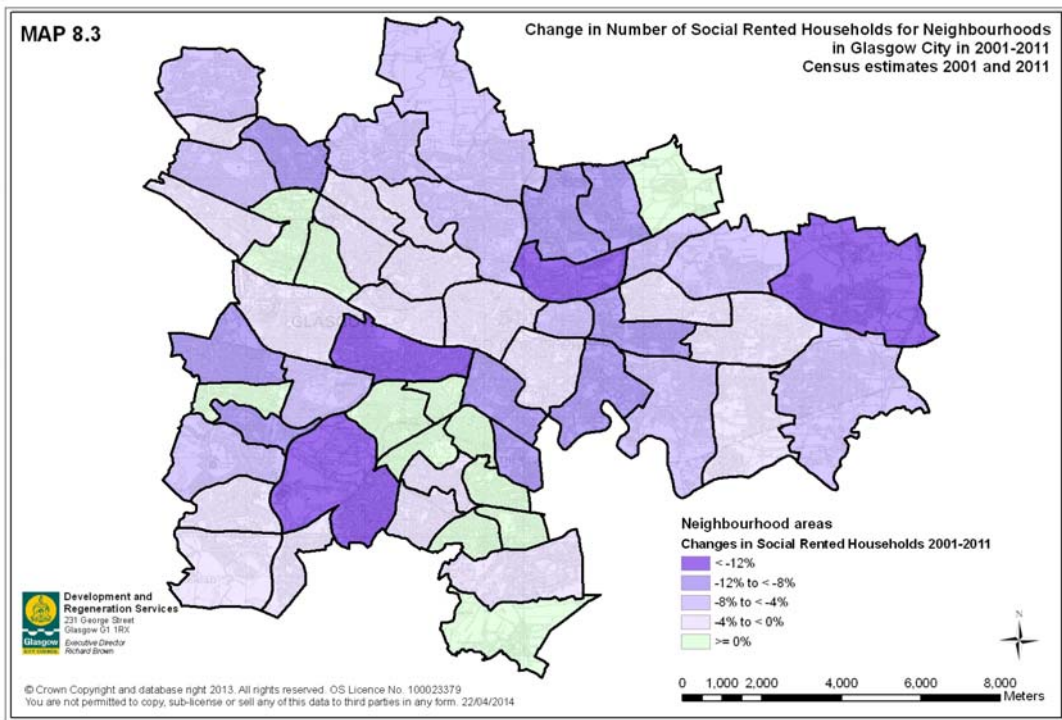
- 8.6 Maps 8.2, 8.3 and 8.4 (see next pages) give the changes by neighbourhood for each of the three tenures. Again, the changes have been defined in terms of “component contributions” to the total household change (see Appendix, Tables A12 to A14).



- 8.7 Map 8.2 shows that the numbers of owner occupied households have **increased** in South Nitshill, Pollok, Castlemilk, Carmunnock, Baillieston and Garrowhill, some neighbourhoods around Robroyston, the area from Knightswood to Lambhill and from Lambhill to Greater Gorbals. **Reductions** in the numbers of owner occupied households (e.g. in Ibrox and Shawlands area) are mainly due to increases in private renting.



- 8.8 Maps 8.3 and 8.4 (see next page) show the changes in the numbers of social rented and private rented households.
- 8.9 Reductions in the numbers of social rented households have been largely due to demolitions and Right-To-Buy. The largest reductions have taken place in Easterhouse, Sighthill, Ibrox and Pollokshaws (see Map 8.3). There have been (small) increases in the number of social rented households in parts of the City, i.e. the area from Pollokshields to Croftfoot, South Cardonald, Anniesland/Broomhill and Robroyston.
- 8.10 Map 8.4 shows that the numbers of private rented households have risen considerably in City Centre neighbourhoods, both north and south of the river Clyde, and in Shawlands/Langside. The rise in private renting has been limited (i.e. under 5% of total households) in the more deprived areas (e.g. Drumchapel, Castlemilk and Easterhouse).



## APPENDIX

### List of Tables:

Table A1 - Population and Household Change in Glasgow City in 2001-2011

Table A2 - Population and Household Change in Glasgow City in 2001-2011

Tables A3.1 to A3.4 – Neighbourhood Profiles, based on Cluster Analysis

Table A4 – Population and Household Change 2001-2011 by Neighbourhood

Table A5 – Changes in Average Household Size 2001-2011 by Neighbourhood

Table A6 – Changes Population Deprivation Rate 2001-2011 by Neighbourhood

Table A7 – Changes in Average Age Population 2001-2011 by Neighbourhood

Table A8 – Changes in Employed Residents 2001-2011 by Neighbourhood

Table A9 – Changes in Single Person Households 2001-2011 by Neighbourhood

Table A10 – Changes in Family Households 2001-2011 by Neighbourhood

Table A11 – Changes in Lone Parent Households 2001-2011 by Neighbourhood

Table A12 – Changes in Owner Occ. Households 2001-2011 by Neighbourhood

Table A13 – Changes Social Rented Households 2001-2011 by Neighbourhood

Table A14 – Changes Private Rented Households 2001-2011 by Neighbourhood

**Table A1 - Population and Household Change in Glasgow City in 2001-2011**

	2001	2011	change	% change Glasgow	% change Scotland
<b>total population</b>	<b>577,869</b>	<b>593,245</b>	<b>15,376</b>	<b>2.7%</b>	<b>4.6%</b>
age 0 to 15	106,498	95,627	-10,871	-10.2%	-5.7%
age 16 to 29	122,707	144,766	22,059	18.0%	10.7%
age 30 to 44	136,976	129,266	-7,710	-5.6%	-9.2%
age 45 to 64	120,996	141,421	20,425	16.9%	17.4%
age 65+	90,692	82,165	-8,527	-9.4%	10.6%
<b>population age 16 to 74</b>	<b>430,967</b>	<b>457,863</b>	<b>26,896</b>	<b>6.2%</b>	<b>6.4%</b>
<b>economically active</b>	<b>241,031</b>	<b>295,058</b>	<b>54,027</b>	<b>22.4%</b>	<b>13.0%</b>
employee full-time	148,542	165,615	17,073	11.5%	4.8%
employee part-time	36,051	50,922	14,871	41.2%	27.7%
self-employed full-time	14,208	18,341	4,133	29.1%	13.0%
self-employed part-time	3,465	6,300	2,835	81.8%	50.8%
unemployed	23,621	29,534	5,913	25.0%	27.9%
full-time student	15,144	24,546	9,402	62.1%	31.5%
<b>economically inactive</b>	<b>189,936</b>	<b>162,605</b>	<b>-27,331</b>	<b>-14.4%</b>	<b>-5.8%</b>
retired	53,661	51,871	-1,790	-3.3%	14.1%
student	26,806	39,714	12,908	48.2%	36.6%
looking after home/family	28,287	18,887	-9,400	-33.2%	-31.2%
permanently sick/disabled	53,226	38,582	-14,644	-27.5%	-26.5%
other	27,956	13,551	-14,405	-51.5%	-47.7%
<b>total households</b>	<b>271,596</b>	<b>285,693</b>	<b>14,097</b>	<b>5.2%</b>	<b>8.2%</b>
<b>one person</b>	<b>113,864</b>	<b>123,236</b>	<b>9,372</b>	<b>8.2%</b>	<b>14.2%</b>
<b>married/cohabiting couple</b>	<b>93,632</b>	<b>94,472</b>	<b>840</b>	<b>0.9%</b>	<b>3.4%</b>
with no children	45,497	47,993	2,496	5.5%	9.8%
with dependent child(ren)	34,865	33,078	-1,787	-5.1%	-4.1%
with all children non-dependent	13,270	13,401	131	1.0%	1.5%
<b>lone parent</b>	<b>41,150</b>	<b>41,315</b>	<b>165</b>	<b>0.4%</b>	<b>14.4%</b>
with dependent child(ren)	27,923	26,513	-1,410	-5.0%	12.2%
with all children non-dependent	13,227	14,802	1,575	11.9%	18.5%
<b>other households</b>	<b>22,950</b>	<b>26,670</b>	<b>3,720</b>	<b>16.2%</b>	<b>5.7%</b>
with no children	16,071	20,649	4,578	28.5%	10.7%
with dependent child(ren)	6,879	6,021	-858	-12.5%	-5.2%
<b>total households</b>	<b>271,596</b>	<b>285,693</b>	<b>14,097</b>	<b>5.2%</b>	<b>8.2%</b>
one adult	113,864	123,236	9,372	8.2%	14.2%
two adults	66,237	74,632	8,395	12.7%	11.8%
three+ adults	26,356	27,872	1,516	5.8%	5.6%
one adult families	22,594	19,837	-2,757	-12.2%	3.5%
two+ adult families	42,545	40,116	-2,429	-5.7%	-3.8%
<b>total households</b>	<b>271,596</b>	<b>285,693</b>	<b>14,097</b>	<b>5.2%</b>	<b>8.2%</b>
<b>Owned</b>	<b>131,828</b>	<b>130,217</b>	<b>-1,611</b>	<b>-1.2%</b>	<b>7.2%</b>
- Owned outright	41,501	48,667	7,166	17.3%	28.6%
- Owned with a mortgage or loan	87,673	79,769	-7,904	-9.0%	-5.4%
- Owned shared ownership	2,654	1,781	-873	-32.9%	-18.4%
<b>Social rented</b>	<b>117,183</b>	<b>104,811</b>	<b>-12,372</b>	<b>-10.6%</b>	<b>-10.6%</b>
<b>Private rented</b>	<b>22,252</b>	<b>48,019</b>	<b>25,767</b>	<b>115.8%</b>	<b>71.5%</b>
- Private landlord or letting agency	18,754	43,814	25,060	133.6%	108.2%
- Employer of a household member	409	120	-289	-70.7%	-71.5%
- Relative/friend of household member	2,486	3,525	1,039	41.8%	-7.4%
- Other private rented	603	560	-43	-7.1%	-27.1%
<b>Living rent free</b>	<b>333</b>	<b>2,646</b>	<b>2,313</b>	<b>694.6%</b>	<b>804.7%</b>

Source: 2001 and 2011 Census of population

National Records of Scotland - CROWN COPYRIGHT RESERVED



**Table A2 - Population and Household Change in Glasgow City in 2001-2011**

	2001	2011	change	component contribution	
				total percentage change Glasgow	Scotland
<b>total population</b>	<b>577,869</b>	<b>593,245</b>	<b>15,376</b>	<b>2.7%</b>	<b>4.6%</b>
age 0 to 15	106,498	95,627	-10,871	-1.9%	-1.1%
age 16 to 29	122,707	144,766	22,059	3.8%	1.9%
age 30 to 44	136,976	129,266	-7,710	-1.3%	-2.1%
age 45 to 64	120,996	141,421	20,425	3.5%	4.3%
age 65+	90,692	82,165	-8,527	-1.5%	1.7%
<b>population age 16 to 74</b>	<b>430,967</b>	<b>457,863</b>	<b>26,896</b>	<b>6.2%</b>	<b>6.4%</b>
<b>economically active</b>	<b>241,031</b>	<b>295,058</b>	<b>54,027</b>	<b>12.5%</b>	<b>8.4%</b>
employee full-time	148,542	165,615	17,073	4.0%	1.9%
employee part-time	36,051	50,922	14,871	3.5%	3.1%
self-employed full-time	14,208	18,341	4,133	1.0%	0.7%
self-employed part-time	3,465	6,300	2,835	0.7%	0.7%
unemployed	23,621	29,534	5,913	1.4%	1.1%
full-time student	15,144	24,546	9,402	2.2%	1.0%
<b>economically inactive</b>	<b>189,936</b>	<b>162,605</b>	<b>-27,331</b>	<b>-6.3%</b>	<b>-2.0%</b>
retired	53,661	51,871	-1,790	-0.4%	2.0%
student	26,806	39,714	12,908	3.0%	1.6%
looking after home/family	28,287	18,887	-9,400	-2.2%	-1.7%
permanently sick/disabled	53,226	38,582	-14,644	-3.4%	-2.0%
other	27,956	13,551	-14,405	-3.3%	-1.9%
<b>total households</b>	<b>271,596</b>	<b>285,693</b>	<b>14,097</b>	<b>5.2%</b>	<b>8.2%</b>
<b>one person</b>	<b>113,864</b>	<b>123,236</b>	<b>9,372</b>	<b>3.5%</b>	<b>4.7%</b>
<b>married/cohabiting couple</b>	<b>93,632</b>	<b>94,472</b>	<b>840</b>	<b>0.3%</b>	<b>1.7%</b>
with no children	45,497	47,993	2,496	0.9%	2.4%
with dependent child(ren)	34,865	33,078	-1,787	-0.7%	-0.8%
with all children non-dependent	13,270	13,401	131	0.0%	0.1%
<b>lone parent</b>	<b>41,150</b>	<b>41,315</b>	<b>165</b>	<b>0.1%</b>	<b>1.5%</b>
with dependent child(ren)	27,923	26,513	-1,410	-0.5%	0.8%
with all children non-dependent	13,227	14,802	1,575	0.6%	0.7%
<b>other households</b>	<b>22,950</b>	<b>26,670</b>	<b>3,720</b>	<b>1.4%</b>	<b>0.3%</b>
with no children	16,071	20,649	4,578	1.7%	0.4%
with dependent child(ren)	6,879	6,021	-858	-0.3%	-0.1%
<b>total households</b>	<b>271,596</b>	<b>285,693</b>	<b>14,097</b>	<b>5.2%</b>	<b>8.2%</b>
one adult	113,864	123,236	9,372	3.5%	4.7%
two adults	66,237	74,632	8,395	3.1%	3.5%
three+ adults	26,356	27,872	1,516	0.6%	0.6%
one adult families	22,594	19,837	-2,757	-1.0%	0.2%
two+ adult families	42,545	40,116	-2,429	-0.9%	-0.8%
<b>total households</b>	<b>271,596</b>	<b>285,693</b>	<b>14,097</b>	<b>5.2%</b>	<b>8.2%</b>
<b>Owned</b>	<b>131,828</b>	<b>130,217</b>	<b>-1,611</b>	<b>-0.6%</b>	<b>4.5%</b>
- Owned outright	41,501	48,667	7,166	2.6%	6.7%
- Owned with a mortgage or loan	87,673	79,769	-7,904	-2.9%	-2.1%
- Owned shared ownership	2,654	1,781	-873	-0.3%	-0.1%
<b>Social rented</b>	<b>117,183</b>	<b>104,811</b>	<b>-12,372</b>	<b>-4.6%</b>	<b>-3.1%</b>
<b>Private rented</b>	<b>22,252</b>	<b>48,019</b>	<b>25,767</b>	<b>9.5%</b>	<b>5.6%</b>
- Private landlord or letting agency	18,754	43,814	25,060	9.2%	6.2%
- Employer of a household member	409	120	-289	-0.1%	-0.5%
- Relative/friend of household member	2,486	3,525	1,039	0.4%	-0.1%
- Other private rented	603	560	-43	0.0%	-0.1%
<b>Living rent free</b>	<b>333</b>	<b>2,646</b>	<b>2,313</b>	<b>0.9%</b>	<b>1.2%</b>

Source: 2001 and 2011 Census of population

National Records of Scotland - CROWN COPYRIGHT RESERVED

**Tables A3.1 to A3.4: Neighbourhood Profiles based on Cluster Analysis**

**Table A3.1 - Age Profiles Neighbourhoods**

profile categories	profile	population total	age 0 to 15	age 16 to 29	age 30 to 44	age 45 to 64	age 65 plus
more children (age 0 to 15)	A	100.0%	19.2%	20.9%	22.2%	24.8%	12.9%
more young adults (age 16 to 29)	B	100.0%	9.5%	38.2%	23.7%	18.4%	10.2%
more elderly (age 65+)	C	100.0%	17.0%	17.5%	19.2%	27.3%	19.0%
Glasgow City	Total	100.0%	16.1%	24.4%	21.8%	23.8%	13.9%

**Table A3.2 - Economic Status Profiles Neighbourhoods**

profile categories	profile	total pop. age 16-74	employed	unemployed	students	retired	sick/disabled	other
concentration students	A	100.0%	40.4%	4.1%	41.4%	5.3%	4.6%	4.2%
more students	B	100.0%	51.9%	5.8%	20.3%	8.8%	6.9%	6.3%
higher employment rates	C	100.0%	65.7%	4.4%	9.7%	10.9%	4.5%	4.8%
near City average	D	100.0%	54.9%	6.7%	8.9%	13.4%	8.8%	7.3%
higher economic inactivity	E	100.0%	46.0%	9.0%	8.7%	13.1%	13.2%	10.0%
Glasgow City	Total	100.0%	52.7%	6.5%	14.0%	11.3%	8.4%	7.1%

**Table A3.3 - Household Type Profiles Neighbourhoods**

profile categories	profile	total households	one person	couple family	lone parent family	all-pensioner	all-student	other
more single person and student hhs.	A	100.0%	50.0%	7.2%	5.1%	2.4%	6.4%	28.9%
more single person and lone parent hhs.	B	100.0%	47.2%	9.6%	12.9%	3.6%	0.7%	26.0%
near City average	C	100.0%	41.8%	13.1%	9.7%	5.3%	0.7%	29.4%
more lone parent family households	D	100.0%	34.5%	13.0%	16.7%	4.3%	0.3%	31.1%
more couple families and pensioner hhs.	E	100.0%	29.2%	22.0%	7.1%	6.4%	0.3%	35.0%
Glasgow City	Total	100.0%	43.1%	11.6%	9.3%	4.2%	2.3%	29.5%

**Table A3.4 - Tenure Profiles Neighbourhoods**

profile categories	profile	households total	households owned	households social rented	households private rented	households rent-free
more social rented	A	100.0%	32.5%	56.2%	10.5%	0.7%
more private rented	B	100.0%	42.5%	22.0%	34.2%	1.3%
more owned	C	100.0%	60.5%	29.8%	9.0%	0.8%
concentration owned	D	100.0%	78.6%	5.1%	15.3%	1.0%
Glasgow City	Total	100.0%	45.6%	36.7%	16.8%	0.9%

**Table A4 - Population and Household Change 2001-2011 by Neighbourhood in Glasgow City**

Neighbourhoods	population	population	% change	households	households	% change
	2001	2011		2001	2011	
Anniesland, Jordanhill & Whiteinch	9,738	10,117	3.9%	4,406	4,734	7.4%
Arden & Carnwadric	9,662	9,327	-3.5%	4,311	4,213	-2.3%
Baillieston & Garrowhill	18,480	18,441	-0.2%	7,133	7,630	7.0%
Balornock & Barmulloch	8,054	7,318	-9.1%	3,246	3,077	-5.2%
Bellahouston, Craigton & Mosspark	8,930	8,898	-0.4%	4,481	4,402	-1.8%
Blackhill & Hogganfield	3,823	3,972	3.9%	1,561	1,713	9.7%
Blairdardie	3,784	3,868	2.2%	1,791	1,803	0.7%
Broomhill & Partick West	11,269	13,768	22.2%	6,368	8,036	26.2%
Calton & Bridgeton	12,008	15,335	27.7%	6,125	8,061	31.6%
Carmunnock	1,378	1,705	23.7%	597	728	21.9%
Castlemilk	13,938	14,141	1.5%	6,464	6,693	3.5%
Cathcart & Simshill	6,953	6,596	-5.1%	2,819	2,872	1.9%
City Centre & Merchant City	12,073	16,424	36.0%	5,719	8,013	40.1%
Corkerhill & North Pollok	4,647	4,487	-3.4%	1,846	1,851	0.3%
Croftfoot	6,788	6,506	-4.2%	2,713	2,744	1.1%
Crookston & South Cardonald	8,423	8,072	-4.2%	3,776	3,820	1.2%
Dennistoun	10,579	11,300	6.8%	5,584	6,199	11.0%
Drumchapel	13,453	13,060	-2.9%	5,743	5,707	-0.6%
Easterhouse	10,023	8,368	-16.5%	4,311	3,853	-10.6%
Govanhill	14,155	14,365	1.5%	7,363	7,411	0.7%
Greater Gorbals	7,784	8,466	8.8%	4,428	4,655	5.1%
Greater Govan	12,315	12,953	5.2%	6,297	6,746	7.1%
Haghill & Carntyne	9,134	8,816	-3.5%	4,597	4,611	0.3%
Hillhead & Woodlands	18,507	19,765	6.8%	8,976	9,546	6.4%
Hyndland, Dowanhill & Partick East	17,122	18,070	5.5%	8,858	9,665	9.1%
Ibrox & Kingston	12,863	11,947	-7.1%	6,447	6,144	-4.7%
Kelvindale & Kelvinside	9,242	9,664	4.6%	4,075	4,321	6.0%
Kingspark & Mount Florida	9,805	9,499	-3.1%	4,277	4,467	4.4%
Knightswood	17,111	17,555	2.6%	8,066	8,342	3.4%
Lambhill & Milton	13,922	13,486	-3.1%	6,332	6,457	2.0%
Langside & Battlefield	12,880	13,428	4.3%	7,576	7,943	4.8%
Maryhill Road Corridor	12,921	13,088	1.3%	6,655	6,758	1.5%
Mount Vernon & East Shettleston	11,925	11,267	-5.5%	5,370	5,382	0.2%
Newlands & Cathcart	7,485	7,164	-4.3%	2,931	2,927	-0.1%
North Cardonald & Penilee	14,326	13,698	-4.4%	6,295	6,135	-2.5%
North Maryhill & Summerston	12,569	12,031	-4.3%	5,680	5,740	1.1%
Parkhead & Dalrnock	6,996	6,789	-3.0%	3,571	3,530	-1.1%
Pollok	9,843	12,006	22.0%	4,115	4,926	19.7%
Pollokshaws & Mansewood	12,144	11,522	-5.1%	5,910	5,729	-3.1%
Pollokshields East	7,036	8,093	15.0%	2,762	3,384	22.5%
Pollokshields West	7,054	7,114	0.9%	2,568	2,672	4.0%
Priesthill & Househillwood	8,628	8,178	-5.2%	3,438	3,543	3.1%
Riddrie & Cranhill	11,001	11,469	4.3%	5,046	5,122	1.5%
Robroyston & Millerston	4,842	5,478	13.1%	1,807	2,076	14.9%
Ruchazie & Garthamlock	7,681	7,691	0.1%	3,267	3,408	4.3%
Ruchill & Possilpark	10,096	10,945	8.4%	5,152	5,468	6.1%
Shawlands & Strathbungo	8,249	8,413	2.0%	4,316	4,387	1.6%
Sighthill, Roystonhill & Germiston	11,400	9,786	-14.2%	5,994	5,007	-16.5%
South Nitshill & Darnley	6,090	7,976	31.0%	2,373	2,971	25.2%
Springboig & Barlanark	13,566	13,440	-0.9%	5,974	6,157	3.1%
Springburn	12,952	12,205	-5.8%	6,658	6,268	-5.9%
Temple & Anniesland	10,888	11,609	6.6%	5,603	6,060	8.2%
Tollcross & West Shettleston	16,163	15,843	-2.0%	7,705	8,008	3.9%
Toryglen	5,156	4,690	-9.0%	2,480	2,344	-5.5%
Yoker & Scotstoun	11,751	12,444	5.9%	5,533	6,019	8.8%
Yorkhill & Anderston	8,264	10,589	28.1%	4,107	5,215	27.0%
<b>Glasgow City</b>	<b>577,869</b>	<b>593,245</b>	<b>2.7%</b>	<b>271,596</b>	<b>285,693</b>	<b>5.2%</b>

Source: National Records of Scotland  
2001 and 2011 Census - Crown Copyright Reserved

**Table A5 - Changes in Average Household Size 2001-2011 by Neighbourhood in Glasgow City**

Neighbourhoods	population in households 2001	households 2001	average household size 2001	population in households 2011	households 2011	average household size 2011	change 2001-2011
Anniesland, Jordanhill & Whiteinch	9,547	4,406	2.167	10,107	4,734	2.135	-0.032
Arden & Carnwadric	9,597	4,311	2.226	9,264	4,213	2.199	-0.027
Baillieston & Garrowhill	18,378	7,133	2.576	18,350	7,630	2.405	-0.171
Balornock & Barmulloch	7,940	3,246	2.446	7,191	3,077	2.337	-0.109
Bellahouston, Craigton & Mossspark	8,896	4,481	1.985	8,885	4,402	2.018	0.033
Blackhill & Hogganfield	3,823	1,561	2.449	3,966	1,713	2.315	-0.134
Blairdardie	3,784	1,791	2.113	3,868	1,803	2.145	0.033
Broomhill & Partick West	11,155	6,368	1.752	13,676	8,036	1.702	-0.050
Calton & Bridgeton	11,436	6,125	1.867	14,290	8,061	1.773	-0.094
Carmunnock	1,353	597	2.266	1,671	728	2.295	0.029
Castlemilk	13,864	6,464	2.145	13,950	6,693	2.084	-0.061
Cathcart & Simshill	6,953	2,819	2.466	6,596	2,872	2.297	-0.170
City Centre & Merchant City	9,316	5,719	1.629	12,804	8,013	1.598	-0.031
Corkerhill & North Pollok	4,647	1,846	2.517	4,473	1,851	2.417	-0.101
Croftfoot	6,782	2,713	2.500	6,501	2,744	2.369	-0.131
Crookston & South Cardonald	8,264	3,776	2.189	7,925	3,820	2.075	-0.114
Dennistoun	10,416	5,584	1.865	11,175	6,199	1.803	-0.063
Drumchapel	13,316	5,743	2.319	12,857	5,707	2.253	-0.066
Easterhouse	9,900	4,311	2.296	8,251	3,853	2.141	-0.155
Govanhill	14,085	7,363	1.913	14,257	7,411	1.924	0.011
Greater Gorbals	7,766	4,428	1.754	8,288	4,655	1.780	0.027
Greater Govan	12,171	6,297	1.933	12,799	6,746	1.897	-0.036
Haghill & Carntyne	8,940	4,597	1.945	8,618	4,611	1.869	-0.076
Hillhead & Woodlands	18,264	8,976	2.035	19,289	9,546	2.021	-0.014
Hyndland, Dowanhill & Partick East	16,427	8,858	1.854	17,902	9,665	1.852	-0.002
Ibrox & Kingston	12,475	6,447	1.935	11,280	6,144	1.836	-0.099
Kelvindale & Kelvinside	8,626	4,075	2.117	8,910	4,321	2.062	-0.055
Kingspark & Mount Florida	9,765	4,277	2.283	9,474	4,467	2.121	-0.162
Knightswood	16,793	8,066	2.082	17,211	8,342	2.063	-0.019
Lambhill & Milton	13,816	6,332	2.182	13,441	6,457	2.082	-0.100
Langside & Battlefield	12,763	7,576	1.685	13,368	7,943	1.683	-0.002
Maryhill Road Corridor	11,672	6,655	1.754	11,555	6,758	1.710	-0.044
Mount Vernon & East Shettleston	11,739	5,370	2.186	11,116	5,382	2.065	-0.121
Newlands & Cathcart	7,404	2,931	2.526	7,102	2,927	2.426	-0.100
North Cardonald & Penilee	14,232	6,295	2.261	13,635	6,135	2.222	-0.038
North Maryhill & Summerston	12,323	5,680	2.170	11,763	5,740	2.049	-0.120
Parkhead & Dalmarnock	6,977	3,571	1.954	6,767	3,530	1.917	-0.037
Pollok	9,677	4,115	2.352	11,832	4,926	2.402	0.050
Pollokshaws & Mansewood	12,114	5,910	2.050	11,504	5,729	2.008	-0.042
Pollokshields East	6,969	2,762	2.523	8,064	3,384	2.383	-0.140
Pollokshields West	6,865	2,568	2.673	6,972	2,672	2.609	-0.064
Priesthill & Househillwood	8,563	3,438	2.491	8,099	3,543	2.286	-0.205
Riddrie & Cranhill	10,458	5,046	2.073	10,491	5,122	2.048	-0.024
Robroyston & Millerston	4,714	1,807	2.609	5,376	2,076	2.590	-0.019
Ruchazie & Garthamlock	7,639	3,267	2.338	7,643	3,408	2.243	-0.096
Ruchill & Possilpark	9,926	5,152	1.927	10,676	5,468	1.952	0.026
Shawlands & Strathbungo	8,146	4,316	1.887	8,316	4,387	1.896	0.008
Sighthill, Roystonhill & Germiston	11,303	5,994	1.886	9,716	5,007	1.940	0.055
South Nitshill & Darnley	5,925	2,373	2.497	7,780	2,971	2.619	0.122
Springboig & Barlanark	13,530	5,974	2.265	13,378	6,157	2.173	-0.092
Springburn	12,850	6,658	1.930	12,058	6,268	1.924	-0.006
Temple & Anniesland	10,850	5,603	1.936	11,562	6,060	1.908	-0.029
Tollcross & West Shettleston	15,980	7,705	2.074	15,722	8,008	1.963	-0.111
Toryglen	5,156	2,480	2.079	4,689	2,344	2.000	-0.079
Yoker & Scotstoun	11,744	5,533	2.123	12,414	6,019	2.062	-0.060
Yorkhill & Anderston	7,960	4,107	1.938	9,384	5,215	1.799	-0.139
<b>Glasgow City</b>	<b>565,974</b>	<b>271,596</b>	<b>2.084</b>	<b>578,251</b>	<b>285,693</b>	<b>2.024</b>	<b>-0.060</b>

Source: National Records of Scotland  
2001 and 2011 Census - Crown Copyright Reserved

**Table A6 - Changes in Population Deprivation Rate 2001-2011 by Neighbourhood in Glasgow City**

Neighbourhoods	population 2001	population deprived dz 2001	% deprived 2001	population 2011	population deprived dz 2011	% deprived 2011	change 2001-2011
Anniesland, Jordanhill & Whiteinch	9,738	2,445	25.1%	10,117	2,697	26.7%	1.6%
Arden & Carnwadric	9,662	6,676	69.1%	9,327	6,354	68.1%	-1.0%
Baillieston & Garrowhill	18,480	3,807	20.6%	18,441	2,776	15.1%	-5.5%
Balornock & Barmulloch	8,054	8,054	100.0%	7,318	5,469	74.7%	-25.3%
Bellahouston, Craigton & Mossspark	8,930	1,733	19.4%	8,898	1,859	20.9%	1.5%
Blackhill & Hogganfield	3,823	2,403	62.9%	3,972	2,658	66.9%	4.1%
Blairdardie	3,784	961	25.4%	3,868	942	24.4%	-1.0%
Broomhill & Partick West	11,269	810	7.2%	13,768	807	5.9%	-1.3%
Calton & Bridgeton	12,008	10,449	87.0%	15,335	8,465	55.2%	-31.8%
Carmunnock	1,378	0	0.0%	1,705	848	49.7%	49.7%
Castlemilk	13,938	13,938	100.0%	14,141	12,355	87.4%	-12.6%
Cathcart & Simshill	6,953	0	0.0%	6,596	0	0.0%	0.0%
City Centre & Merchant City	12,073	5,811	48.1%	16,424	4,230	25.8%	-22.4%
Corkerhill & North Pollok	4,647	4,647	100.0%	4,487	3,591	80.0%	-20.0%
Croftfoot	6,788	0	0.0%	6,506	0	0.0%	0.0%
Crookston & South Cardonald	8,423	876	10.4%	8,072	918	11.4%	1.0%
Dennistoun	10,579	4,351	41.1%	11,300	2,310	20.4%	-20.7%
Drumchapel	13,453	13,453	100.0%	13,060	11,629	89.0%	-11.0%
Easterhouse	10,023	10,023	100.0%	8,368	7,137	85.3%	-14.7%
Govanhill	14,155	7,390	52.2%	14,365	4,860	33.8%	-18.4%
Greater Gorbals	7,784	6,991	89.8%	8,466	6,331	74.8%	-15.0%
Greater Govan	12,315	10,976	89.1%	12,953	11,437	88.3%	-0.8%
Haghill & Carntyne	9,134	7,346	80.4%	8,816	6,156	69.8%	-10.6%
Hillhead & Woodlands	18,507	5,307	28.7%	19,765	2,512	12.7%	-16.0%
Hyndland, Dowanhill & Partick East	17,122	750	4.4%	18,070	787	4.4%	0.0%
Ibrox & Kingston	12,863	9,014	70.1%	11,947	4,449	37.2%	-32.8%
Kelvindale & Kelvinside	9,242	0	0.0%	9,664	0	0.0%	0.0%
Kingspark & Mount Florida	9,805	0	0.0%	9,499	0	0.0%	0.0%
Knightswood	17,111	8,903	52.0%	17,555	4,580	26.1%	-25.9%
Lambhill & Milton	13,922	12,850	92.3%	13,486	11,571	85.8%	-6.5%
Langside & Battlefield	12,880	0	0.0%	13,428	0	0.0%	0.0%
Maryhill Road Corridor	12,921	7,478	57.9%	13,088	6,029	46.1%	-11.8%
Mount Vernon & East Shettleston	11,925	4,438	37.2%	11,267	3,546	31.5%	-5.7%
Newlands & Cathcart	7,485	0	0.0%	7,164	0	0.0%	0.0%
North Cardonald & Penilee	14,326	8,042	56.1%	13,698	5,462	39.9%	-16.3%
North Maryhill & Summerston	12,569	7,440	59.2%	12,031	4,405	36.6%	-22.6%
Parkhead & Dalmarnock	6,996	6,996	100.0%	6,789	6,542	96.4%	-3.6%
Pollok	9,843	4,286	43.5%	12,006	3,390	28.2%	-15.3%
Pollokshaws & Mansewood	12,144	6,462	53.2%	11,522	2,674	23.2%	-30.0%
Pollokshields East	7,036	1,972	28.0%	8,093	1,436	17.7%	-10.3%
Pollokshields West	7,054	0	0.0%	7,114	0	0.0%	0.0%
Priesthill & Househillwood	8,628	8,628	100.0%	8,178	7,901	96.6%	-3.4%
Riddrie & Cranhill	11,001	9,051	82.3%	11,469	7,001	61.0%	-21.2%
Robroyston & Millerston	4,842	0	0.0%	5,478	0	0.0%	0.0%
Ruchazie & Garthamlock	7,681	6,258	81.5%	7,691	6,039	78.5%	-3.0%
Ruchill & Possilpark	10,096	10,096	100.0%	10,945	9,976	91.1%	-8.9%
Shawlands & Strathbungo	8,249	0	0.0%	8,413	0	0.0%	0.0%
Sighthill, Roystonhill & Germiston	11,400	11,400	100.0%	9,786	3,683	37.6%	-62.4%
South Nitshill & Darnley	6,090	1,704	28.0%	7,976	0	0.0%	-28.0%
Springboig & Barlanark	13,566	11,149	82.2%	13,440	11,255	83.7%	1.6%
Springburn	12,952	11,466	88.5%	12,205	7,577	62.1%	-26.4%
Temple & Anniesland	10,888	5,457	50.1%	11,609	2,208	19.0%	-31.1%
Tollcross & West Shettleston	16,163	11,462	70.9%	15,843	11,206	70.7%	-0.2%
Toryglen	5,156	4,379	84.9%	4,690	2,476	52.8%	-32.1%
Yoker & Scotstoun	11,751	8,438	71.8%	12,444	6,519	52.4%	-19.4%
Yorkhill & Anderston	8,264	3,117	37.7%	10,589	976	9.2%	-28.5%
<b>Glasgow City</b>	<b>577,869</b>	<b>309,683</b>	<b>53.6%</b>	<b>593,245</b>	<b>238,029</b>	<b>40.1%</b>	<b>-13.5%</b>

Source: National Records of Scotland  
2001 and 2011 Census - Crown Copyright Reserved

**Table A7 - Changes in Average Age Population 2001-2011 by Neighbourhood in Glasgow City**

Neighbourhoods	average age 2001	average age 2011	change 2001-2011
Anniesland, Jordanhill & Whiteinch	38.7	39.3	0.7
Arden & Carnwadric	34.7	35.9	1.3
Baillieston & Garrowhill	37.4	40.4	3.0
Balornock & Barmulloch	39.6	40.2	0.7
Bellahouston, Craigton & Mosspark	46.9	44.1	-2.8
Blackhill & Hogganfield	36.4	38.0	1.6
Blairdardie	45.5	43.1	-2.4
Broomhill & Partick West	39.5	38.4	-1.1
Calton & Bridgeton	39.1	36.2	-2.9
Carmunnock	44.1	41.5	-2.5
Castlemilk	36.3	38.1	1.7
Cathcart & Simshill	38.5	41.7	3.2
City Centre & Merchant City	36.7	32.4	-4.3
Corkerhill & North Pollok	34.2	36.1	1.9
Croftfoot	34.1	36.0	1.8
Crookston & South Cardonald	41.1	42.1	1.0
Dennistoun	38.4	36.1	-2.3
Drumchapel	33.2	34.1	0.9
Easterhouse	33.4	37.0	3.6
Govanhill	36.9	36.3	-0.5
Greater Gorbals	41.1	38.6	-2.5
Greater Govan	39.3	38.7	-0.6
Haghill & Carntyne	42.2	41.0	-1.3
Hillhead & Woodlands	33.3	32.6	-0.7
Hyndland, Dowanhill & Partick East	37.4	37.6	0.2
Ibrox & Kingston	34.8	35.4	0.7
Kelvindale & Kelvinside	38.5	39.5	1.0
Kingspark & Mount Florida	37.2	39.2	2.1
Knightswood	43.5	42.1	-1.4
Lambhill & Milton	40.8	40.3	-0.5
Langside & Battlefield	38.2	38.1	-0.1
Maryhill Road Corridor	37.8	36.6	-1.3
Mount Vernon & East Shettleston	43.0	45.3	2.3
Newlands & Cathcart	41.1	42.2	1.0
North Cardonald & Penilee	39.9	39.3	-0.6
North Maryhill & Summerston	36.5	38.4	2.0
Parkhead & Dalmarnock	38.0	37.6	-0.4
Pollok	38.4	38.4	0.0
Pollokshaws & Mansewood	41.2	41.0	-0.3
Pollokshields East	32.8	32.5	-0.4
Pollokshields West	38.9	40.4	1.6
Priesthill & Househillwood	35.3	37.3	2.0
Riddrie & Cranhill	42.3	41.2	-1.1
Robroyston & Millerston	30.8	35.6	4.7
Ruchazie & Garthamlock	35.4	36.2	0.8
Ruchill & Possilpark	38.0	37.7	-0.3
Shawlands & Strathbungo	37.9	37.7	-0.2
Sighthill, Roystonhill & Germiston	35.5	34.9	-0.7
South Nitshill & Darnley	33.3	34.4	1.1
Springboig & Barlanark	36.8	38.3	1.5
Springburn	37.8	38.4	0.6
Temple & Anniesland	42.0	39.9	-2.1
Tollcross & West Shettleston	37.3	38.2	0.9
Toryglen	40.2	40.1	-0.1
Yoker & Scotstoun	35.9	35.8	0.0
Yorkhill & Anderston	32.7	31.4	-1.3
Glasgow City	38.0	38.0	0.0

Source: National Records of Scotland  
2001 and 2011 Census - Crown Copyright Reserved

**Table A8 - Changes in Employed Residents 2001-2011 by Neighbourhood in Glasgow City**

Neighbourhoods	population age 16-74 2001	population retired 2001	population students 2001	population adjusted 2001	population employed 2001	population employed 2011	change 2001-2011	component contribution 2001-2011
Anniesland, Jordanhill & Whiteinch	6,989	932	724	5,333	3,959	4,388	429	8.0%
Arden & Carnwadric	6,935	727	384	5,824	3,273	3,404	131	2.2%
Baillieston & Garrowhill	13,611	1,705	848	11,058	8,044	8,673	629	5.7%
Balornock & Barmulloch	5,883	975	295	4,613	2,305	2,504	199	4.3%
Bellahouston, Craigton & Mossspark	6,350	1,450	304	4,596	2,999	3,556	557	12.1%
Blackhill & Hogganfield	2,840	362	187	2,291	1,289	1,624	335	14.6%
Blairdardie	2,633	544	161	1,928	1,367	1,600	233	12.1%
Broomhill & Partick West	9,114	1,041	1,050	7,023	5,429	7,307	1,878	26.7%
Calton & Bridgeton	9,679	1,194	1,092	7,393	3,701	5,657	1,956	26.5%
Carmunnock	960	171	74	715	513	716	203	28.4%
Castlemilk	9,881	1,242	580	8,059	3,479	4,641	1,162	14.4%
Cathcart & Simshill	5,313	672	458	4,183	3,415	3,349	-66	-1.6%
City Centre & Merchant City	10,465	1,008	3,935	5,522	3,060	5,087	2,027	36.7%
Corkehill & North Pollok	3,259	405	164	2,690	1,346	1,668	322	12.0%
Croftfoot	4,911	446	361	4,104	3,215	3,163	-52	-1.3%
Crookston & South Cardonald	6,017	1,032	386	4,599	3,232	3,348	116	2.5%
Dennistoun	8,423	935	936	6,552	4,024	5,238	1,214	18.5%
Drumchapel	8,962	762	552	7,648	3,430	4,176	746	9.8%
Easterhouse	6,933	712	340	5,881	2,514	2,965	451	7.7%
Govanhill	10,800	1,036	949	8,815	5,120	5,665	545	6.2%
Greater Gorbals	6,014	926	384	4,704	1,940	3,038	1,098	23.3%
Greater Govan	9,067	1,219	498	7,350	3,872	5,047	1,175	16.0%
Haghill & Carntyne	6,775	1,145	371	5,259	2,616	3,316	700	13.3%
Hillhead & Woodlands	15,577	1,005	4,655	9,917	6,759	7,294	535	5.4%
Hyndland, Downhill & Partick East	14,284	1,161	2,694	10,429	8,397	9,007	610	5.8%
Ibrox & Kingston	9,834	770	885	8,179	4,662	5,227	565	6.9%
Kelvindale & Kelvinside	7,201	713	1,283	5,205	4,306	4,541	235	4.5%
Kingspark & Mount Florida	7,322	858	608	5,856	4,520	4,766	246	4.2%
Knightswood	12,035	2,301	663	9,071	5,267	6,489	1,222	13.5%
Lambhill & Milton	10,052	1,777	497	7,778	3,791	4,703	912	11.7%
Langside & Battlefield	10,378	919	743	8,716	6,866	8,119	1,253	14.4%
Maryhill Road Corridor	10,393	1,082	2,102	7,209	4,253	4,942	689	9.6%
Mount Vernon & East Shettleston	8,794	1,545	427	6,822	4,567	4,643	76	1.1%
Newlands & Cathcart	5,324	838	498	3,988	3,139	3,254	115	2.9%
North Cardonald & Penilee	10,081	1,670	615	7,796	4,700	5,362	662	8.5%
North Maryhill & Summerston	9,292	1,043	682	7,567	4,683	5,185	502	6.6%
Parkhead & Dalmarnock	4,927	708	200	4,019	1,495	2,139	644	16.0%
Pollok	7,281	1,081	377	5,823	3,693	5,365	1,672	28.7%
Pollokshaws & Mansewood	8,752	1,454	586	6,712	3,896	4,602	706	10.5%
Pollokshields East	4,892	419	548	3,925	2,156	3,029	873	22.2%
Pollokshields West	5,099	640	576	3,883	2,878	3,115	237	6.1%
Priesthill & Househillwood	6,054	765	372	4,917	2,180	2,765	585	11.9%
Riddrie & Cranhill	7,936	1,386	359	6,191	2,911	3,641	730	11.8%
Robroyston & Millerston	3,507	132	181	3,194	2,717	2,969	252	7.9%
Ruchazie & Garthamlock	5,422	576	289	4,557	2,349	2,837	488	10.7%
Ruchill & Possilpark	7,232	907	355	5,970	2,380	3,641	1,261	21.1%
Shawlands & Strathbungo	6,580	598	492	5,490	4,331	4,822	491	8.9%
Sighthill, Roystonhill & Germiston	8,376	903	697	6,776	2,884	3,293	409	6.0%
South Nitshill & Darnley	4,351	305	259	3,787	2,712	3,618	906	23.9%
Springboig & Barlanark	9,620	1,362	485	7,773	3,791	4,648	857	11.0%
Springburn	9,525	1,363	518	7,644	4,040	4,126	86	1.1%
Temple & Anniesland	8,063	1,330	534	6,199	4,046	5,127	1,081	17.4%
Tollcross & West Shettleston	11,733	1,465	623	9,645	5,355	6,524	1,169	12.1%
Toryglen	3,645	610	187	2,848	1,313	1,656	343	12.0%
Yoker & Scotstoun	8,402	946	644	6,812	4,010	5,156	1,146	16.8%
Yorkhill & Anderston	7,189	388	2,283	4,518	3,077	4,443	1,366	30.2%
<b>Glasgow City</b>	<b>430,967</b>	<b>53,661</b>	<b>41,950</b>	<b>335,356</b>	<b>202,266</b>	<b>241,178</b>	<b>38,912</b>	<b>11.6%</b>

Source: National Records of Scotland  
2001 and 2011 Census - Crown Copyright Reserved

**Table A9 - Changes in Single Person Households 2001-2011 by Neighbourhood in Glasgow City**

Neighbourhoods	households 2001	single person hhs 2001	single person hhs 2011	change 2001-2011	component contribution 2001-2011
Anniesland, Jordanhill & Whiteinch	4,406	1,828	1,992	164	3.7%
Arden & Carnwadric	4,311	1,570	1,613	43	1.0%
Baillieston & Garrowhill	7,133	1,732	2,130	398	5.6%
Balornock & Barmulloch	3,246	922	985	63	1.9%
Bellahouston, Craigton & Mosspark	4,481	2,050	1,978	-72	-1.6%
Blackhill & Hogganfield	1,561	442	507	65	4.2%
Blairdardie	1,791	684	706	22	1.2%
Broomhill & Partick West	6,368	3,367	4,208	841	13.2%
Calton & Bridgeton	6,125	2,978	4,019	1,041	17.0%
Carmunnock	597	194	241	47	7.9%
Castlemilk	6,464	2,486	2,797	311	4.8%
Cathcart & Simshill	2,819	827	944	117	4.2%
City Centre & Merchant City	5,719	3,386	4,609	1,223	21.4%
Corkerhill & North Pollok	1,846	550	580	30	1.6%
Croftfoot	2,713	714	759	45	1.7%
Crookston & South Cardonald	3,776	1,465	1,578	113	3.0%
Dennistoun	5,584	2,720	2,882	162	2.9%
Drumchapel	5,743	2,029	2,096	67	1.2%
Easterhouse	4,311	1,455	1,459	4	0.1%
Govanhill	7,363	3,735	3,910	175	2.4%
Greater Gorbals	4,428	2,408	2,421	13	0.3%
Greater Govan	6,297	3,015	3,298	283	4.5%
Haghill & Carntyne	4,597	2,061	2,183	122	2.7%
Hillhead & Woodlands	8,976	3,909	3,945	36	0.4%
Hyndland, Dowanhill & Partick East	8,858	4,177	4,295	118	1.3%
Ibrox & Kingston	6,447	3,112	3,025	-87	-1.3%
Kelvindale & Kelvinside	4,075	1,600	1,693	93	2.3%
Kingspark & Mount Florida	4,277	1,538	1,750	212	5.0%
Knightswood	8,066	3,303	3,533	230	2.9%
Lambhill & Milton	6,332	2,357	2,635	278	4.4%
Langside & Battlefield	7,576	4,250	4,346	96	1.3%
Maryhill Road Corridor	6,655	3,599	3,675	76	1.1%
Mount Vernon & East Shettleston	5,370	1,984	2,158	174	3.2%
Newlands & Cathcart	2,931	843	895	52	1.8%
North Cardonald & Penilee	6,295	2,250	2,274	24	0.4%
North Maryhill & Summerston	5,680	2,142	2,356	214	3.8%
Parkhead & Dalrnarnock	3,571	1,638	1,651	13	0.4%
Pollok	4,115	1,218	1,522	304	7.4%
Pollokshaws & Mansewood	5,910	2,672	2,654	-18	-0.3%
Pollokshields East	2,762	1,006	1,367	361	13.1%
Pollokshields West	2,568	747	826	79	3.1%
Priesthill & Househillwood	3,438	994	1,189	195	5.7%
Riddrie & Cranhill	5,046	2,132	2,179	47	0.9%
Robroyston & Millerston	1,807	352	488	136	7.5%
Ruchazie & Garthamlock	3,267	1,095	1,177	82	2.5%
Ruchill & Possilpark	5,152	2,442	2,550	108	2.1%
Shawlands & Strathbungo	4,316	2,102	1,991	-111	-2.6%
Sighthill, Roystonhill & Germiston	5,994	2,953	2,392	-561	-9.4%
South Nitshill & Darnley	2,373	677	789	112	4.7%
Springboig & Barlanark	5,974	1,970	2,314	344	5.8%
Springburn	6,658	3,195	2,996	-199	-3.0%
Temple & Anniesland	5,603	2,604	2,828	224	4.0%
Tollcross & West Shettleston	7,705	3,204	3,641	437	5.7%
Toryglen	2,480	1,043	1,088	45	1.8%
Yoker & Scotstoun	5,533	2,227	2,599	372	6.7%
Yorkhill & Anderston	4,107	1,911	2,520	609	14.8%
<b>Glasgow City</b>	<b>271,596</b>	<b>113,864</b>	<b>123,236</b>	<b>9,372</b>	<b>3.5%</b>

Source: National Records of Scotland  
2001 and 2011 Census - Crown Copyright Reserved



**Table A10 - Changes in Family Households 2001-2011 by Neighbourhood in Glasgow City**

Neighbourhoods	households 2001	family households 2001	family households 2011	change 2001-2011	component contribution 2001-2011
Anniesland, Jordanhill & Whiteinch	4,406	1,222	1,312	90	2.0%
Arden & Carnwadric	4,311	1,531	1,369	-162	-3.8%
Baillieston & Garrowhill	7,133	2,557	2,385	-172	-2.4%
Balornock & Barmulloch	3,246	1,063	970	-93	-2.9%
Bellahouston, Craigton & Mosspark	4,481	814	909	95	2.1%
Blackhill & Hogganfield	1,561	547	546	-1	-0.1%
Blairdardie	1,791	406	451	45	2.5%
Broomhill & Partick West	6,368	930	1,001	71	1.1%
Calton & Bridgeton	6,125	1,147	1,257	110	1.8%
Carmunnock	597	165	213	48	8.0%
Castlemilk	6,464	2,183	1,973	-210	-3.2%
Cathcart & Simshill	2,819	819	680	-139	-4.9%
City Centre & Merchant City	5,719	561	468	-93	-1.6%
Corkerhill & North Pollok	1,846	716	651	-65	-3.5%
Croftfoot	2,713	1,052	934	-118	-4.3%
Crookston & South Cardonald	3,776	1,062	943	-119	-3.2%
Dennistoun	5,584	1,009	888	-121	-2.2%
Drumchapel	5,743	2,294	2,137	-157	-2.7%
Easterhouse	4,311	1,725	1,189	-536	-12.4%
Govanhill	7,363	1,548	1,423	-125	-1.7%
Greater Gorbals	4,428	812	850	38	0.9%
Greater Govan	6,297	1,587	1,569	-18	-0.3%
Haghill & Carntyne	4,597	997	919	-78	-1.7%
Hillhead & Woodlands	8,976	1,385	1,199	-186	-2.1%
Hyndland, Dowanhill & Partick East	8,858	1,263	1,203	-60	-0.7%
Ibrox & Kingston	6,447	1,430	939	-491	-7.6%
Kelvindale & Kelvinside	4,075	892	847	-45	-1.1%
Kingspark & Mount Florida	4,277	1,216	1,030	-186	-4.3%
Knightswood	8,066	1,947	2,037	90	1.1%
Lambhill & Milton	6,332	1,715	1,795	80	1.3%
Langside & Battlefield	7,576	1,027	959	-68	-0.9%
Maryhill Road Corridor	6,655	1,115	968	-147	-2.2%
Mount Vernon & East Shettleston	5,370	1,333	1,137	-196	-3.6%
Newlands & Cathcart	2,931	896	805	-91	-3.1%
North Cardonald & Penilee	6,295	1,896	1,787	-109	-1.7%
North Maryhill & Summerston	5,680	1,768	1,526	-242	-4.3%
Parkhead & Dalrnarnock	3,571	1,038	917	-121	-3.4%
Pollok	4,115	1,338	1,599	261	6.3%
Pollokshaws & Mansewood	5,910	1,449	1,327	-122	-2.1%
Pollokshields East	2,762	913	959	46	1.7%
Pollokshields West	2,568	800	782	-18	-0.7%
Priesthill & Househillwood	3,438	1,354	1,158	-196	-5.7%
Riddrie & Cranhill	5,046	1,248	1,310	62	1.2%
Robroyston & Millerston	1,807	811	822	11	0.6%
Ruchazie & Garthamlock	3,267	1,169	1,137	-32	-1.0%
Ruchill & Possilpark	5,152	1,449	1,445	-4	-0.1%
Shawlands & Strathbungo	4,316	731	695	-36	-0.8%
Sighthill, Roystonhill & Germiston	5,994	1,671	1,346	-325	-5.4%
South Nitshill & Darnley	2,373	964	1,259	295	12.4%
Springboig & Barlanark	5,974	2,039	1,895	-144	-2.4%
Springburn	6,658	1,702	1,584	-118	-1.8%
Temple & Anniesland	5,603	1,116	1,226	110	2.0%
Tollcross & West Shettleston	7,705	2,322	2,035	-287	-3.7%
Toryglen	2,480	674	588	-86	-3.5%
Yoker & Scotstoun	5,533	1,705	1,652	-53	-1.0%
Yorkhill & Anderston	4,107	544	607	63	1.5%
<b>Glasgow City</b>	<b>271,596</b>	<b>69,667</b>	<b>65,612</b>	<b>-4,055</b>	<b>-1.5%</b>

Source: National Records of Scotland  
2001 and 2011 Census - Crown Copyright Reserved

**Table A11 - Changes in Lone Parent Households 2001-2011 by Neighbourhood in Glasgow City**

Neighbourhoods	households 2001	lone parent households 2001	lone parent households 2011	change 2001-2011	component contribution 2001-2011
Anniesland, Jordanhill & Whiteinch	4,406	310	348	38	0.9%
Arden & Carnwadric	4,311	670	618	-52	-1.2%
Baillieston & Garrowhill	7,133	470	581	111	1.6%
Balornock & Barmulloch	3,246	434	440	6	0.2%
Bellahouston, Craigton & Mosspark	4,481	179	305	126	2.8%
Blackhill & Hogganfield	1,561	197	236	39	2.5%
Blairdardie	1,791	102	144	42	2.3%
Broomhill & Partick West	6,368	296	324	28	0.4%
Calton & Bridgeton	6,125	585	639	54	0.9%
Carmunnock	597	35	57	22	3.7%
Castlemilk	6,464	1,294	1,073	-221	-3.4%
Cathcart & Simshill	2,819	99	118	19	0.7%
City Centre & Merchant City	5,719	320	178	-142	-2.5%
Corkerhill & North Pollok	1,846	349	303	-46	-2.5%
Croftfoot	2,713	277	383	106	3.9%
Crookston & South Cardonald	3,776	304	362	58	1.5%
Dennistoun	5,584	428	385	-43	-0.8%
Drumchapel	5,743	1,344	1,190	-154	-2.7%
Easterhouse	4,311	962	650	-312	-7.2%
Govanhill	7,363	580	445	-135	-1.8%
Greater Gorbals	4,428	469	452	-17	-0.4%
Greater Govan	6,297	817	777	-40	-0.6%
Haghill & Carntyne	4,597	457	459	2	0.0%
Hillhead & Woodlands	8,976	522	409	-113	-1.3%
Hyndland, Dowanhill & Partick East	8,858	358	268	-90	-1.0%
Ibrox & Kingston	6,447	675	366	-309	-4.8%
Kelvindale & Kelvinside	4,075	158	163	5	0.1%
Kingspark & Mount Florida	4,277	290	294	4	0.1%
Knightswood	8,066	682	783	101	1.3%
Lambhill & Milton	6,332	786	922	136	2.1%
Langside & Battlefield	7,576	346	296	-50	-0.7%
Maryhill Road Corridor	6,655	544	483	-61	-0.9%
Mount Vernon & East Shettleston	5,370	302	375	73	1.4%
Newlands & Cathcart	2,931	93	135	42	1.4%
North Cardonald & Penilee	6,295	752	736	-16	-0.3%
North Maryhill & Summerston	5,680	739	651	-88	-1.5%
Parkhead & Dalrnarnock	3,571	639	563	-76	-2.1%
Pollok	4,115	434	463	29	0.7%
Pollokshaws & Mansewood	5,910	577	495	-82	-1.4%
Pollokshields East	2,762	248	244	-4	-0.1%
Pollokshields West	2,568	73	80	7	0.3%
Priesthill & Househillwood	3,438	669	592	-77	-2.2%
Riddrie & Cranhill	5,046	535	618	83	1.6%
Robroyston & Millerston	1,807	114	162	48	2.7%
Ruchazie & Garthamlock	3,267	549	583	34	1.0%
Ruchill & Possilpark	5,152	876	765	-111	-2.2%
Shawlands & Strathbungo	4,316	168	151	-17	-0.4%
Sighthill, Roystonhill & Germiston	5,994	897	668	-229	-3.8%
South Nitshill & Darnley	2,373	242	295	53	2.2%
Springboig & Barlanark	5,974	1,045	975	-70	-1.2%
Springburn	6,658	841	870	29	0.4%
Temple & Anniesland	5,603	396	449	53	0.9%
Tollcross & West Shettleston	7,705	1,059	1,021	-38	-0.5%
Toryglen	2,480	353	300	-53	-2.1%
Yoker & Scotstoun	5,533	734	662	-72	-1.3%
Yorkhill & Anderston	4,107	249	209	-40	-1.0%
<b>Glasgow City</b>	<b>271,596</b>	<b>27,923</b>	<b>26,513</b>	<b>-1,410</b>	<b>-0.5%</b>

Source: National Records of Scotland  
2001 and 2011 Census - Crown Copyright Reserved

**Table A12 - Changes in Owner Occupied Households 2001-2011 by Neighbourhood in Glasgow City**

Neighbourhoods	households 2001	owner occupied households 2001	owner occupied households 2011	change 2001-2011	component contribution 2001-2011
Anniesland, Jordanhill & Whiteinch	4,406	2,834	2,784	-50	-1.1%
Arden & Carnwadric	4,311	1,786	1,631	-155	-3.6%
Baillieston & Garrowhill	7,133	5,625	5,949	324	4.5%
Balornock & Barmulloch	3,246	1,332	1,447	115	3.5%
Bellahouston, Craigton & Mosspark	4,481	2,721	2,615	-106	-2.4%
Blackhill & Hogganfield	1,561	824	943	119	7.6%
Blairdardie	1,791	1,073	1,083	10	0.6%
Broomhill & Partick West	6,368	3,866	3,765	-101	-1.6%
Calton & Bridgeton	6,125	2,146	2,279	133	2.2%
Carmunnoch	597	430	535	105	17.6%
Castlemilk	6,464	1,309	1,488	179	2.8%
Cathcart & Simshill	2,819	2,505	2,364	-141	-5.0%
City Centre & Merchant City	5,719	1,796	2,116	320	5.6%
Corkerhill & North Pollok	1,846	686	778	92	5.0%
Croftfoot	2,713	2,314	2,082	-232	-8.6%
Crookston & South Cardonald	3,776	2,596	2,440	-156	-4.1%
Dennistoun	5,584	2,847	2,533	-314	-5.6%
Drumchapel	5,743	1,103	1,267	164	2.9%
Easterhouse	4,311	1,161	1,122	-39	-0.9%
Govanhill	7,363	3,490	2,717	-773	-10.5%
Greater Gorbals	4,428	984	1,248	264	6.0%
Greater Govan	6,297	2,069	2,174	105	1.7%
Haghill & Carntyne	4,597	1,908	1,822	-86	-1.9%
Hillhead & Woodlands	8,976	3,780	3,338	-442	-4.9%
Hyndland, Dowanhill & Partick East	8,858	5,524	4,997	-527	-5.9%
Ibrox & Kingston	6,447	2,867	2,255	-612	-9.5%
Kelvindale & Kelvinside	4,075	3,284	3,197	-87	-2.1%
Kingspark & Mount Florida	4,277	3,359	3,183	-176	-4.1%
Knightswood	8,066	4,298	4,516	218	2.7%
Lambhill & Milton	6,332	2,477	2,719	242	3.8%
Langside & Battlefield	7,576	5,254	4,737	-517	-6.8%
Maryhill Road Corridor	6,655	2,409	2,116	-293	-4.4%
Mount Vernon & East Shettleston	5,370	3,597	3,527	-70	-1.3%
Newlands & Cathcart	2,931	2,585	2,459	-126	-4.3%
North Cardonald & Penilee	6,295	3,405	3,438	33	0.5%
North Maryhill & Summerston	5,680	2,728	2,901	173	3.0%
Parkhead & Dalmarnock	3,571	614	675	61	1.7%
Pollok	4,115	2,679	3,352	673	16.4%
Pollokshaws & Mansewood	5,910	2,792	2,825	33	0.6%
Pollokshields East	2,762	1,433	1,471	38	1.4%
Pollokshields West	2,568	2,337	2,238	-99	-3.9%
Priesthill & Househillwood	3,438	1,025	1,019	-6	-0.2%
Riddrie & Cranhill	5,046	2,138	2,151	13	0.3%
Robroyston & Millerston	1,807	1,694	1,824	130	7.2%
Ruchazie & Garthamlock	3,267	1,158	1,306	148	4.5%
Ruchill & Possilpark	5,152	980	1,222	242	4.7%
Shawlands & Strathbungo	4,316	3,200	2,721	-479	-11.1%
Sighthill, Roystonhill & Germiston	5,994	1,174	980	-194	-3.2%
South Nitshill & Darnley	2,373	1,557	2,020	463	19.5%
Springboig & Barlanark	5,974	2,168	2,218	50	0.8%
Springburn	6,658	2,380	2,033	-347	-5.2%
Temple & Anniesland	5,603	3,231	3,472	241	4.3%
Tollcross & West Shettleston	7,705	3,357	3,132	-225	-2.9%
Toryglen	2,480	802	828	26	1.0%
Yoker & Scotstoun	5,533	2,491	2,575	84	1.5%
Yorkhill & Anderston	4,107	1,646	1,590	-56	-1.4%
<b>Glasgow City</b>	<b>271,596</b>	<b>131,828</b>	<b>130,217</b>	<b>-1,611</b>	<b>-0.6%</b>

Source: National Records of Scotland  
2001 and 2011 Census - Crown Copyright Reserved

**Table A13 - Changes in Social Rented Households 2001-2011 by Neighbourhood in Glasgow City**

Neighbourhoods	households 2001	social rented households 2001	social rented households 2011	change 2001-2011	component contribution 2001-2011
Anniesland, Jordanhill & Whiteinch	4,406	1,325	1,392	67	1.5%
Arden & Carnwadric	4,311	2,402	2,319	-83	-1.9%
Baillieston & Garrowhill	7,133	1,330	1,039	-291	-4.1%
Balornock & Barmulloch	3,246	1,868	1,493	-375	-11.6%
Bellahouston, Craigton & Mosspark	4,481	1,618	1,371	-247	-5.5%
Blackhill & Hogganfield	1,561	700	628	-72	-4.6%
Blairdardie	1,791	692	633	-59	-3.3%
Broomhill & Partick West	6,368	1,572	1,629	57	0.9%
Calton & Bridgeton	6,125	3,362	3,349	-13	-0.2%
Carmunnock	597	155	155	0	0.0%
Castlemilk	6,464	5,040	4,931	-109	-1.7%
Cathcart & Simshill	2,819	112	143	31	1.1%
City Centre & Merchant City	5,719	2,705	2,489	-216	-3.8%
Corkerhill & North Pollok	1,846	1,117	928	-189	-10.2%
Croftfoot	2,713	91	105	14	0.5%
Crookston & South Cardonald	3,776	990	995	5	0.1%
Dennistoun	5,584	2,007	1,667	-340	-6.1%
Drumchapel	5,743	4,570	4,226	-344	-6.0%
Easterhouse	4,311	2,996	2,377	-619	-14.4%
Govanhill	7,363	2,470	2,521	51	0.7%
Greater Gorbals	4,428	3,295	2,810	-485	-11.0%
Greater Govan	6,297	4,051	3,986	-65	-1.0%
Haghill & Carntyne	4,597	2,320	1,932	-388	-8.4%
Hillhead & Woodlands	8,976	2,685	2,470	-215	-2.4%
Hyndland, Dowanhill & Partick East	8,858	1,357	1,336	-21	-0.2%
Ibrox & Kingston	6,447	2,507	1,536	-971	-15.1%
Kelvindale & Kelvinside	4,075	157	129	-28	-0.7%
Kingspark & Mount Florida	4,277	383	416	33	0.8%
Knightswood	8,066	3,624	3,210	-414	-5.1%
Lambhill & Milton	6,332	3,733	3,305	-428	-6.8%
Langside & Battlefield	7,576	806	684	-122	-1.6%
Maryhill Road Corridor	6,655	3,405	3,266	-139	-2.1%
Mount Vernon & East Shettleston	5,370	1,645	1,440	-205	-3.8%
Newlands & Cathcart	2,931	250	192	-58	-2.0%
North Cardonald & Penilee	6,295	2,634	2,047	-587	-9.3%
North Maryhill & Summerston	5,680	2,755	2,303	-452	-8.0%
Parkhead & Dalmarnock	3,571	2,837	2,417	-420	-11.8%
Pollok	4,115	1,358	1,155	-203	-4.9%
Pollokshaws & Mansewood	5,910	2,934	2,211	-723	-12.2%
Pollokshields East	2,762	815	866	51	1.8%
Pollokshields West	2,568	73	94	21	0.8%
Priesthill & Househillwood	3,438	2,301	2,244	-57	-1.7%
Riddrie & Cranhill	5,046	2,798	2,655	-143	-2.8%
Robroyston & Millerston	1,807	38	55	17	0.9%
Ruchazie & Garthamlock	3,267	2,040	1,780	-260	-8.0%
Ruchill & Possilpark	5,152	4,024	3,728	-296	-5.7%
Shawlands & Strathbungo	4,316	191	196	5	0.1%
Sighthill, Roystonhill & Germiston	5,994	4,664	3,619	-1,045	-17.4%
South Nitshill & Darnley	2,373	747	681	-66	-2.8%
Springboig & Barlanark	5,974	3,675	3,530	-145	-2.4%
Springburn	6,658	4,034	3,413	-621	-9.3%
Temple & Anniesland	5,603	2,078	1,612	-466	-8.3%
Tollcross & West Shettleston	7,705	4,023	3,627	-396	-5.1%
Toryglen	2,480	1,609	1,342	-267	-10.8%
Yoker & Scotstoun	5,533	2,832	2,791	-41	-0.7%
Yorkhill & Anderston	4,107	1,383	1,343	-40	-1.0%
<b>Glasgow City</b>	<b>271,596</b>	<b>117,183</b>	<b>104,811</b>	<b>-12,372</b>	<b>-4.6%</b>

Source: National Records of Scotland  
2001 and 2011 Census - Crown Copyright Reserved

**Table A14 - Changes in Private Rented Households 2001-2011 by Neighbourhood in Glasgow City**

Neighbourhoods	households 2001	private rented households 2001	private rented households 2011	change 2001-2011	component contribution 2001-2011
Anniesland, Jordanhill & Whiteinch	4,406	240	520	280	6.4%
Arden & Carnwadric	4,311	115	242	127	2.9%
Baillieston & Garrowhill	7,133	175	581	406	5.7%
Balornock & Barmulloch	3,246	41	119	78	2.4%
Bellahouston, Craigton & Mosspark	4,481	136	371	235	5.2%
Blackhill & Hogganfield	1,561	36	129	93	6.0%
Blairdardie	1,791	24	69	45	2.5%
Broomhill & Partick West	6,368	923	2,539	1,616	25.4%
Calton & Bridgeton	6,125	610	2,369	1,759	28.7%
Carmunnock	597	12	36	24	4.0%
Castlemilk	6,464	100	259	159	2.5%
Cathcart & Simshill	2,819	197	343	146	5.2%
City Centre & Merchant City	5,719	1,210	3,214	2,004	35.0%
Corkerhill & North Pollok	1,846	42	132	90	4.9%
Croftfoot	2,713	307	533	226	8.3%
Crookston & South Cardonald	3,776	182	356	174	4.6%
Dennistoun	5,584	724	1,924	1,200	21.5%
Drumchapel	5,743	63	192	129	2.2%
Easterhouse	4,311	147	344	197	4.6%
Govanhill	7,363	1,397	2,102	705	9.6%
Greater Gorbals	4,428	146	570	424	9.6%
Greater Govan	6,297	172	545	373	5.9%
Haghill & Carntyne	4,597	366	823	457	9.9%
Hillhead & Woodlands	8,976	2,502	3,611	1,109	12.4%
Hyndland, Dowanhill & Partick East	8,858	1,966	3,209	1,243	14.0%
Ibrox & Kingston	6,447	1,066	2,276	1,210	18.8%
Kelvindale & Kelvinside	4,075	620	934	314	7.7%
Kingspark & Mount Florida	4,277	532	841	309	7.2%
Knightswood	8,066	131	537	406	5.0%
Lambhill & Milton	6,332	117	396	279	4.4%
Langside & Battlefield	7,576	1,511	2,461	950	12.5%
Maryhill Road Corridor	6,655	832	1,293	461	6.9%
Mount Vernon & East Shettleston	5,370	126	370	244	4.5%
Newlands & Cathcart	2,931	87	232	145	4.9%
North Cardonald & Penilee	6,295	253	601	348	5.5%
North Maryhill & Summerston	5,680	194	510	316	5.6%
Parkhead & Dalrarnock	3,571	114	405	291	8.1%
Pollok	4,115	77	388	311	7.6%
Pollokshaws & Mansewood	5,910	170	642	472	8.0%
Pollokshields East	2,762	507	1,003	496	18.0%
Pollokshields West	2,568	153	313	160	6.2%
Priesthill & Househillwood	3,438	108	271	163	4.7%
Riddrie & Cranhill	5,046	105	288	183	3.6%
Robroyston & Millerston	1,807	74	178	104	5.8%
Ruchazie & Garthamlock	3,267	67	300	233	7.1%
Ruchill & Possilpark	5,152	144	488	344	6.7%
Shawlands & Strathbungo	4,316	922	1,429	507	11.7%
Sighthill, Roystonhill & Germiston	5,994	135	380	245	4.1%
South Nitshill & Darnley	2,373	67	259	192	8.1%
Springboig & Barlanark	5,974	128	367	239	4.0%
Springburn	6,658	238	642	404	6.1%
Temple & Anniesland	5,603	290	908	618	11.0%
Tollcross & West Shettleston	7,705	320	1,198	878	11.4%
Toryglen	2,480	65	161	96	3.9%
Yoker & Scotstoun	5,533	193	611	418	7.6%
Yorkhill & Anderston	4,107	1,073	2,205	1,132	27.6%
<b>Glasgow City</b>	<b>271,596</b>	<b>22,252</b>	<b>48,019</b>	<b>25,767</b>	<b>9.5%</b>

Source: National Records of Scotland  
2001 and 2011 Census - Crown Copyright Reserved