



Glasgow City Council

**Briefing Paper by Executive Director of Development and
Regeneration Services**

Contact: Jan Freeke

Phone: (0141) 287 8647

POPULATION AND HOUSEHOLD PROJECTIONS 2012 - 2022

FOR GLASGOW CITY'S 21 MULTI-MEMBER WARDS

**Results of National Records of Scotland Projections
and Comparison with Glasgow City Council DRS Projections**

Date of Issue: 25 April 2016

PLEASE NOTE THE FOLLOWING:

Any Ordnance Survey mapping included within this Report is provided by Glasgow City Council under licence from the Ordnance Survey in order to fulfil its public function to make available Council-held public domain information. Persons viewing this mapping should contact Ordnance Survey Copyright for advice where they wish to licence Ordnance Survey mapping/map data for their own use. The OS web site can be found at <<http://www.ordnancesurvey.co.uk>> " If accessing this Report via the Internet, please note that any mapping is for illustrative purposes only and is not true to any marked scale

1 INTRODUCTION

- 1.1 On 23rd March 2016, National Records of Scotland (NRS) published, for the first time, population and household projections for small areas **within** councils (2012-based) in response to requests from councils and community planners. For most of the council areas in Scotland, including Glasgow City, Wards have been selected as the small area geography.
- 1.2 These population and household projections can be used to determine housing and service provision requirements which may vary considerably across different areas within the council area. These differences are not captured in council area projections.
- 1.3 As this is the first time that NRS has produced sub-council area projections, NRS has classified the projections as experimental statistics, being developed and published to involve users and stakeholders in their development, and to build in quality and understanding at an early stage. NRS would like to hear from users about whether these projections have been useful, examples of how they have been used and any feedback on the results and methodology.
- 1.4 NRS makes clear that the projections assume a continuation of past trends in local fertility, mortality, migration and household formation. They do not take account of any future changes that may occur as a result of policy initiatives, social or economic change or house-building. **Projections are not forecasts of what the government expects to happen.** For example, an area may have seen recent increases and the projections simply show these trends continuing regardless of future planned development or planning restrictions.
- 1.5 The projections are constrained to the published 2012-based sub-national principal projections at council area level. The projections are 2012-based and do not take account of more recent data or more recent projections. **It should be noted that in the Office for National Statistics 2014-based projections for Scotland the long term fertility rate has been reduced, as compared with the 2012-based projections. This has resulted in projected lower numbers of children.**
- 1.6 Further information on the projections is available from the NRS website at <http://www.nrscotland.gov.uk/statistics-and-data/statistics/statistics-by-theme/population/population-projections/population-and-household-sub-council-area-projections>
- 1.7 In 2015, Glasgow City Council - Development and Regeneration Services (GCC-DRS) prepared a set of population and household projections for Glasgow's 21 Multi Member Wards. The results were discussed by the Council's Regeneration and the Economy Policy Development Committee on 18th August 2015 and have been published on the Council's website: <https://glasgow.gov.uk/CHttpHandler.ashx?id=30428&p=0>
- 1.8 This briefing paper gives the results of the NRS projections and compares these with those from GCC-DRS for Glasgow City's 21 Multi Member Wards.

2 MAIN RESULTS

NRS Projections

- 2.1 In Glasgow City, the population is expected to grow by 3,450 per year and the number of households by 2,600 per year, in the period 2012 to 2022.
- 2.2 The five Wards with the highest expected population growth in 2012-2022 are Partick West, Calton, East Centre, Govan and Pollokshields.
- 2.3 The number of children is expected to rise by 1,300 per year in 2012-2022. The projected rise in the number of children during 2012-2022 is concentrated in the Wards more directly north and south of the river Clyde.
- 2.4 The number of elderly is expected to rise by 750 per year in 2012-2022. The projected rise in the number of elderly is concentrated in Greater Pollok, Pollokshields, Langside and Linn (in Glasgow South), in North East, Baillieston and Shettleston (in Glasgow East) and in Partick West, Hillhead and Maryhill/Kelvin (in Glasgow West).

Comparison with GCC-DRS Projections

- 2.5 ***Projection results need to be understood in relation to the assumptions made.*** Given that NRS has undertaken this exercise, it is possible to compare the NRS projection results with those of the GCC-DRS projections. ***For practical purposes, given the uncertainty associated with any projections, it is useful to have ranges of results rather than single figure projections.***
- 2.6 The NRS projections show, generally, a higher rate of population growth for Wards in Glasgow West and a lower rate of population growth for Wards in Glasgow East. NRS projections are based on past population change. GCC-DRS projections take into account planned housing development in Glasgow East and other areas of the City.
- 2.7 Within Glasgow South the NRS projections indicate a higher population growth for Pollokshields and population losses for Newlands/Auldburn. Again, planned housing stock change relative to changes in recent years has led, in the GCC-DRS projections, to higher population change in Newlands/Auldburn and lower population growth in Pollokshields.
- 2.8 For Wards with higher student numbers, e.g. Anderston/City and Hillhead, the population age profile is different in the NRS projections with fewer numbers “age 16 to 29” and higher numbers “age 45+”. This is due to a different methodology used in relation to the student population (see paragraph 3.2).
- 2.9 The NRS projections show a higher rate of population growth for the East Centre Ward than the GCC-DRS projections. This is probably due to the different way the Barlinnie prison population is handled in the two projections.

3 APPROACH AND METHODOLOGY

- 3.1 Both sets of projections, from National Records of Scotland (NRS) and from Glasgow City Council – Development and Regeneration Services (GCC-DRS), use the same projection methodology (cohort component method) and have been prepared with the same software (POPGROUP). Also, both projections have the same base year (2012) and have been constrained to the NRS 2012-based principal projection for Glasgow City.
- 3.2 There are also important differences. The main ones are: (1) the NRS projections are based on past trends, i.e. recent fertility and mortality rates and recent levels of net-migration. The GCC-DRS projections are also based on past trends, but net-migration levels have been adjusted to reflect planned changes in the housing stock over the projection period (i.e. newbuild and demolitions); (2) a different treatment of (some) communal establishment population. In areas with a high number of students, the NRS projections take out these students, calculate the changes in the remaining population (i.e. births, deaths and migration) and then add the students back in. In the GCC-DRS projections the changes in the population are calculated for the population *including students*. The same difference of approach has been applied to the Barlinnie prison population in East Centre Ward; and (3) patterns of household formation reflect local rates of change in the NRS projections and reflect the City-wide rate of change (with calibration) in the GCC-DRS projections.
- 3.3 Further detail on the NRS projection methodology is given in the publication “Population and Household Projections for Scottish Sub-Council Areas (2012-based)”, which is available on the NRS website (see paragraph 1.6). The briefing paper “Population and Household Projections 2012-2022 for Glasgow City’s 21 Multi-Member Wards” gives detail on the projection methodology used in the GCC-DRS projections. This paper can be accessed on the Council website (see paragraph 1.7).
- 3.4 NRS projections cover a 25-year period, i.e. 2012 to 2037. NRS notes, however, that projections become more uncertain the further ahead they project and that therefore the results to 2026 are considered more reliable than the longer-term projections. GCC-DRS projections are for the 10-year period 2012-2022. This paper gives the NRS projection results for the two periods 2012 to 2022 and 2022 to 2026.
- 3.5 Appendix A contains a set of Tables (A1 to A8) with population and household estimates (for 2012) and projection results (for 2022 and 2026).

4 PROJECTION RESULTS

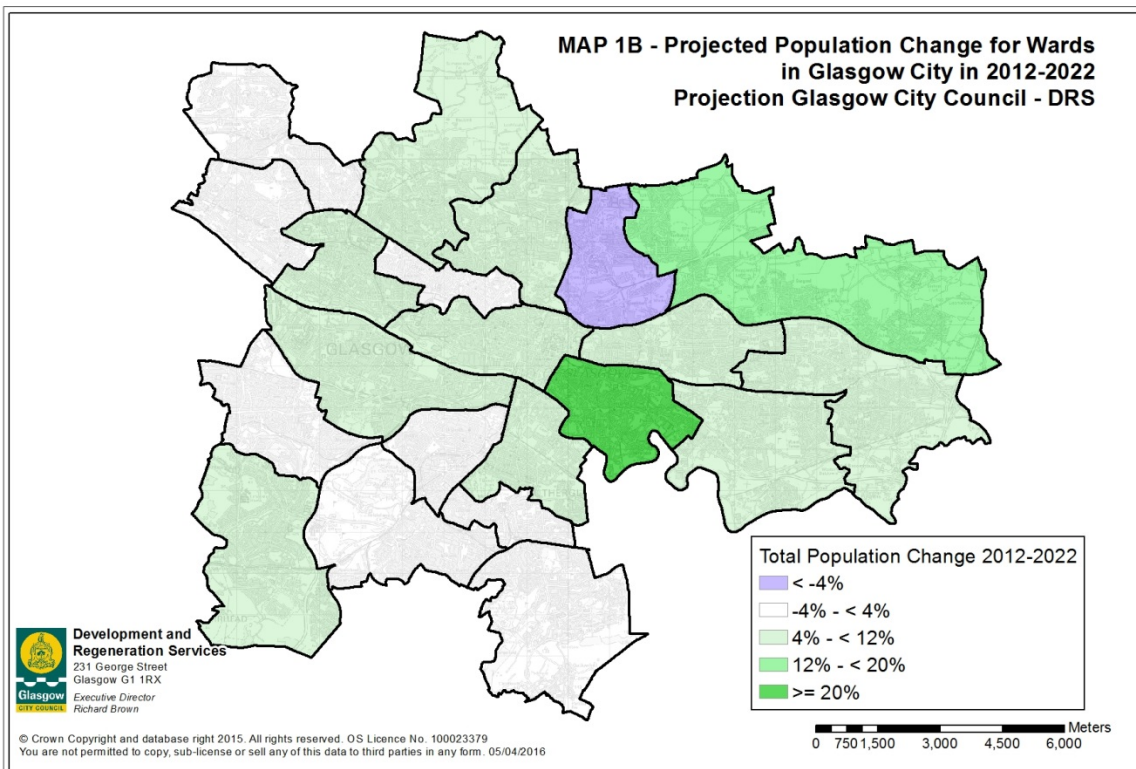
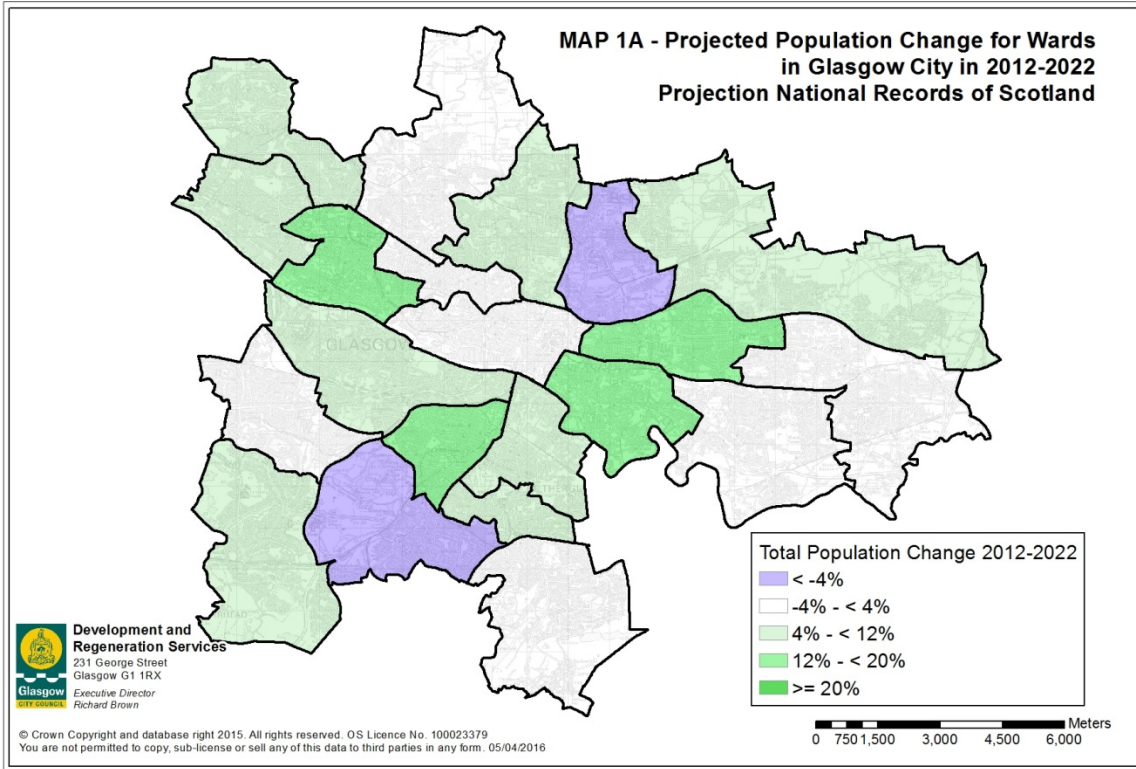
- 4.1 In this chapter the projected changes for Glasgow's population and households are discussed via a commentary on some Tables and a series of Maps. Figures quoted in the text have been rounded to the nearest 50.
- 4.2 The focus in this chapter is on the results of the NRS projections. In the text these results are described first and after that a comparison is made with the GCC-DRS projection results. The "A" maps show the projected changes in 2012 to 2022 from the NRS projection, and the "B" maps show the projection results from the GCC-DRS projection. In the maps green is used to show increases and purple is used to show reductions.

Table 1 - Estimated and Projected Population Change Glasgow City

	estimates	principal projection	principal projection
	2002 to 2012	2012 to 2022	2022 to 2026
population at start of period	576,450	595,080	629,696
population at end of period	595,080	629,696	645,919
total change	18,630	34,616	16,223
annual change	1,863	3,462	4,056
births	7,086	7,795	8,026
deaths	6,934	6,078	5,820
natural change	152	1,717	2,206
net migration/other changes	1,711	1,745	1,850

Source: National Records of Scotland - Crown Copyright Reserved

- 4.3 Glasgow's population is projected to grow by 3,450 per year in 2012-2022 according to the NRS principal projection (see Table 1), which is considerably higher than in the recent decade (1,850 per year in 2002-2012). It should be noted that net migration is projected to be similar in the two periods (at about 1,700 to 1,750 per year). The difference is caused by a higher natural population change in the projection period (more births and fewer deaths).
- 4.4 For the period 2022 to 2026 Glasgow's population is projected to grow by 4,050 per year. More than half of this growth (2,200 per year) is accounted for by natural change and just under half of this growth (1,850 per year) is accounted for by net migration.
- 4.5 Map 1A (see next page) shows the projected population change for Glasgow's Wards in 2012 to 2022. The most notable projected changes are population growth in three areas: (1) Calton, East Centre and North East in Glasgow East, (2) Partick West, Garscadden/Scotstounhill and Drumchapel/Annie'sland in Glasgow West and (3) Govan, Pollokshields, Southside Central and Langside in Glasgow South. Canal and Greater Pollok are also expected to see population growth. Population losses are expected in Springburn and Newlands/Auldburn.



- 4.6 The main differences with the GCC-DRS projections (see Maps 1A and 1B and Table 2) are a lower rate of population change in Glasgow East (North East, Baillieston, Shettleston and Calton), a higher rate of population growth in Glasgow West (Partick West, Garscadden/Scotstoun and Drumchapel/Annie'sland) and, in Glasgow South, more population growth in Pollokshields and Langside, together with population losses in Newlands/Auldburn.
- 4.7 East Centre is the only Ward in Glasgow East for which the NRS projections show a higher rise in population. In Glasgow North West (Maryhill/Kelvin and Canal) projected growth is smaller than in the GCC – DRS projections.

Table 2 - Comparison of Population Change for MMWs in Glasgow City in 2012-2022

Multi Member Ward	2012	NRS 2022	DRS 2022	% change NRS	2012-2022 DRS
Linn	28,913	29,523	29,535	2%	2%
Newlands/Auldburn	23,189	21,803	23,566	-6%	2%
Greater Pollok	33,056	35,530	35,337	7%	7%
Craigton	29,626	29,195	30,150	-1%	2%
Govan	30,988	34,378	33,016	11%	7%
Pollokshields	22,571	25,902	23,089	15%	2%
Langside	23,103	24,373	23,092	5%	0%
Southside Central	28,770	30,786	30,937	7%	8%
Calton	24,746	29,539	31,510	19%	27%
Anderston/City	29,177	30,310	31,606	4%	8%
Hillhead	26,703	26,764	27,285	0%	2%
Partick West	33,310	39,081	35,064	17%	5%
Garscadden/Scotstounhill	29,707	31,799	29,569	7%	0%
Drumchapel/Annie'sland	28,862	31,508	29,741	9%	3%
Maryhill/Kelvin	27,086	27,585	28,678	2%	6%
Canal	32,107	34,483	35,525	7%	11%
Springburn	21,407	19,958	19,882	-7%	-7%
East Centre	29,992	34,049	31,840	14%	6%
Shettleston	25,651	25,445	26,864	-1%	5%
Baillieston	32,614	32,138	34,729	-1%	6%
North East	33,502	35,547	38,681	6%	15%
Glasgow City	595,080	629,696	629,696	6%	6%

Source:

The 2012 ward estimates are based on 2012 population estimates for data zones

and the NRS 2022 projected population figures are from projections by

National Records of Scotland (NRS) - CROWN COPYRIGHT RESERVED

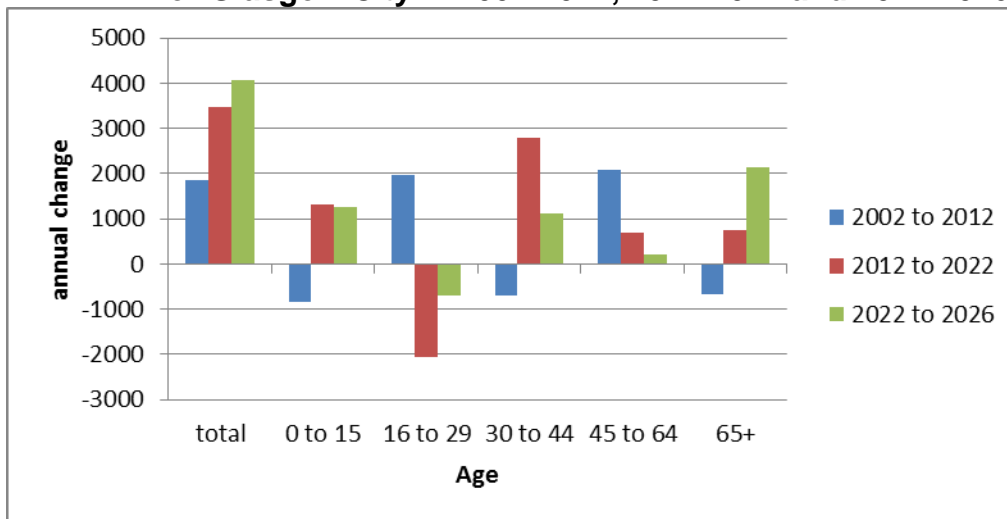
DRS 2022 projected population figures are from projections by Glasgow City Council - DRS

The DRS 2022 projections have been constrained to the NRS 2012-base principal population projection for Glasgow City.

Population Change by Age

- 4.8 Graph 1 and Table 3 show that there are considerable differences in the population change by age between the projection periods and the recent decade.

Graph 1 - Estimated and Projected Annual Population Change by Age for Glasgow City in 2002-2012, 2012-2022 and 2022-2026



Source: National Records of Scotland – Crown Copyright Reserved

Table 3 - Estimated/Projected Population Change by Age in Glasgow City

	estimates	principal projection	principal projection
	2002 to 2012	2012 to 2022	2022 to 2026
	annual change	annual change	annual change
0 to 4	338	431	-2
5 to 11	-752	918	544
12 to 15	-437	-31	719
children	-851	1,318	1,261
16 to 29	1,974	-2,072	-687
30 to 44	-691	2,784	1,130
45 to 64	2,093	679	222
adults (non elderly)	3,376	1,391	665
65 to 74	-632	652	1,460
75 to 84	-123	-136	501
85 and over	93	237	169
elderly	-662	753	2,130
total population	1,863	3,462	4,056

Source: National Records of Scotland - Crown Copyright Reserved

- 4.9 The number of children fell by 850 per year in 2002-2012 but is expected to rise by 1,300 per year in 2012-2022 and by 1,250 per year in 2022-2026.

- 4.10 The number of non-elderly adults (or adults of working age, approximated by the age-group 16-64) is projected to grow by only 1,400 per year in 2012-2022 and by 650 in 2022-2026. This compares with a growth of 3,400 per year in 2002-2012. The age-group 16-29 rose by 1,950 per year in 2002-2012 and falls by 2,050 per year in 2012-2022 and by 700 per year in 2022-2026.
- 4.11 The number of elderly fell by 650 per year in 2002-2012 but is expected to rise by 750 per year in 2012-2022 and by 2,150 per year in 2022-2026.
- 4.12 Table 4 below gives a slightly longer term perspective via a comparison between the periods 2012-2022 and 2022-2026 of projected **annual** changes for children, non-elderly adults and elderly (see Appendix, Tables A5 and A6).
- 4.13 In the later period, 2022-2026, the annual change in the number of **children** is projected to reduce most, relative to 2012-2022, for Drumchapel/Anniesland, Anderston/City and Langside and to increase most for Calton and Greater Pollok. The annual change in the number of **elderly** is expected to increase significantly for Garscadden/Scotstounhill, East Centre and North East.

Table 4 - Comparison Annual Population Change by Age and MMW in 2012-2022 and 2022-2026

Multi Member Ward	children age 0 to 15		adults age 16 to 64		elderly age 65+	
	2012-2022	2022-2026	2012-2022	2022-2026	2012-2022	2022-2026
Linn	19	20	-60	-75	102	116
Newlands/Auldburn	-28	-34	-128	-151	18	45
Greater Pollok	32	92	105	-19	110	195
Craigton	37	24	-85	-128	5	91
Govan	116	120	211	190	12	100
Pollokshields	82	72	179	164	72	102
Langside	70	26	-5	-19	62	105
Southside Central	47	19	172	143	-18	55
Calton	134	175	329	300	17	86
Anderston/City	63	23	63	137	-13	46
Hillhead	51	26	-91	-52	45	54
Partick West	141	157	338	293	98	162
Garscadden/Scotstounhill	56	45	134	77	19	130
Drumchapel/Anniesland	112	72	134	129	18	99
Maryhill/Kelvin	54	51	-66	-76	63	90
Canal	113	124	117	101	8	79
Springburn	-20	-27	-73	-138	-51	20
East Centre	142	170	287	224	-23	80
Shettleston	25	41	-81	-157	36	111
Baillieston	-3	14	-130	-241	86	171
North East	77	49	40	-35	88	192
Glasgow City	1,319	1,261	1,391	665	753	2,130

Source: National Records of Scotland - Crown Copyright Reserved

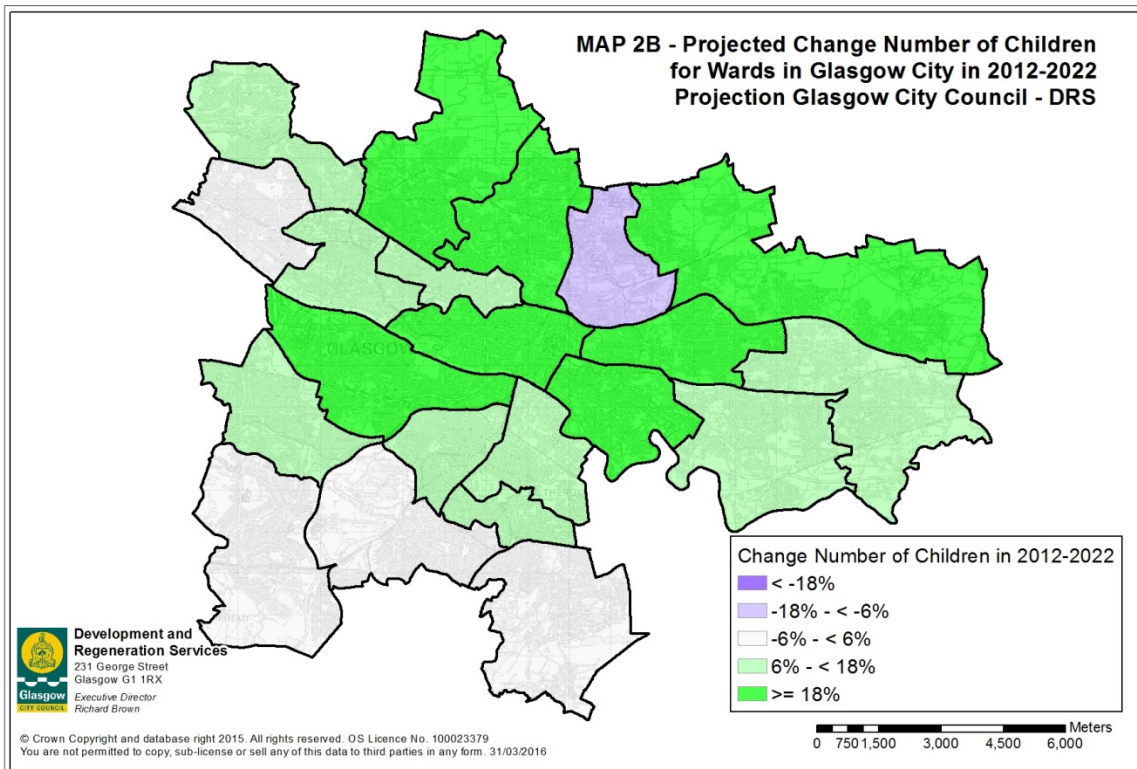
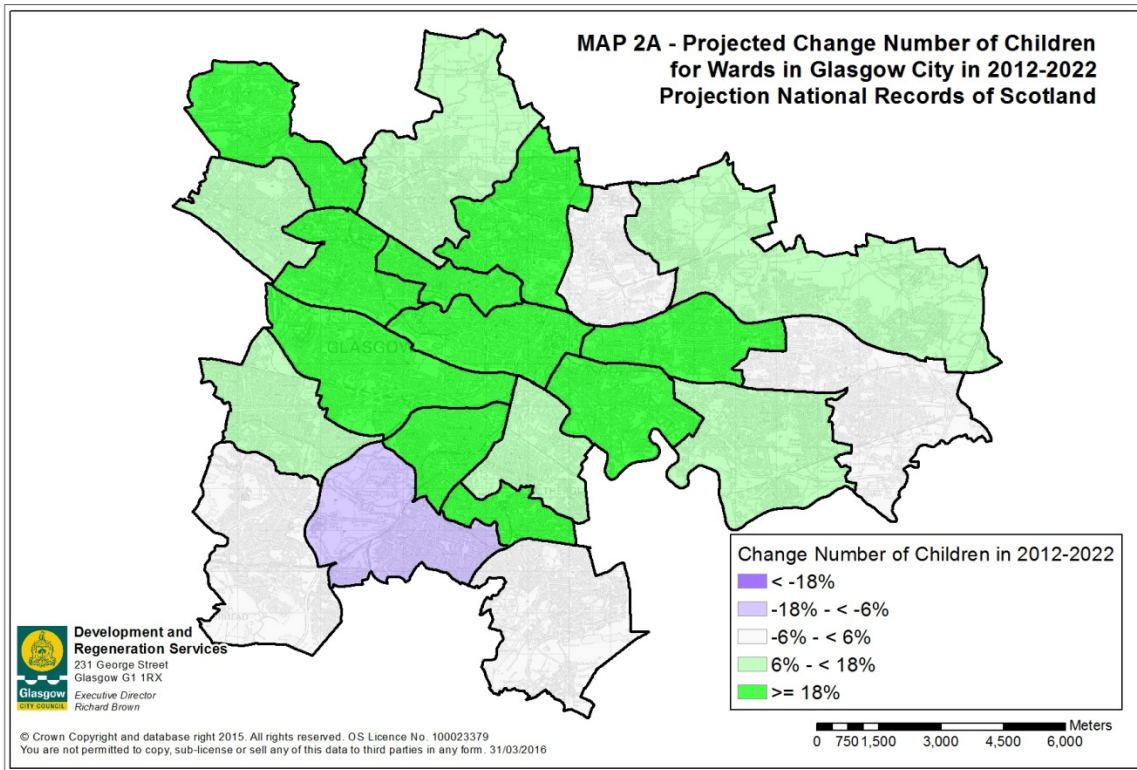
- 4.14 In the following pages Maps 2A/B to 4A/B show the projected population changes for children (age 0 to 15), non-elderly adults (age 16 to 64) and elderly (age 65+). These Maps and corresponding Tables compare projected changes from the NRS projections and the GCC-DRS projections.

Number of Children (age 0-15)

- 4.15 Map 2A (see next page) shows the projected change in the number of children for Glasgow's Wards in 2012 to 2022. The most notable projected changes are increases in the number of children in two areas: (1) north of the River Clyde: from Drumchapel/Annie'sland in the West to Calton and East Centre in the East, as well as the Canal Ward, and (2) south of the River Clyde: from Govan to Pollokshields and Langside.
- 4.16 The number of children is projected to fall in Newlands/Auldburn, Springburn and Baillieston.
- 4.17 The main differences with the GCC-DRS projections (see Maps 2A and 2B and Table 5) in relation to changes in the number of children are: (1) lower changes in Glasgow East (North East, Baillieston, Shettleston and Calton), (2) lower rises in Glasgow North West (Maryhill/Kelvin and Canal) and (3) higher rises in Glasgow West (Hillhead, Partick West, Garscadden/Scotstounhill and Drumchapel/Annie'sland). The position in Glasgow South is mixed, with higher rises for Pollokshields and Langside and a change from a moderate rise to a significant fall for the number of children in Newlands/Auldburn.

Table 5 - Comparison of Change in Children for MWWs in Glasgow City in 2012-2022

Multi Member Ward	2012	NRS 2022	DRS 2022	% change NRS	2012-2022 DRS
Linn	5,513	5,702	5,621	3%	2%
Newlands/Auldburn	4,151	3,867	4,311	-7%	4%
Greater Pollok	6,925	7,244	7,163	5%	3%
Craigton	5,631	6,001	6,189	7%	10%
Govan	4,562	5,721	5,588	25%	22%
Pollokshields	4,078	4,901	4,423	20%	8%
Langside	2,937	3,638	3,455	24%	18%
Southside Central	4,734	5,208	5,512	10%	16%
Calton	3,391	4,728	5,042	39%	49%
Anderston/City	1,891	2,523	2,500	33%	32%
Hillhead	2,750	3,265	3,106	19%	13%
Partick West	4,119	5,529	4,754	34%	15%
Garscadden/Scotstounhill	5,499	6,060	5,629	10%	2%
Drumchapel/Annie'sland	5,605	6,726	6,348	20%	13%
Maryhill/Kelvin	4,148	4,684	4,925	13%	19%
Canal	5,020	6,146	6,357	22%	27%
Springburn	4,192	3,989	3,908	-5%	-7%
East Centre	4,265	5,684	5,459	33%	28%
Shettleston	3,986	4,231	4,522	6%	13%
Baillieston	6,015	5,981	6,487	-1%	8%
North East	6,851	7,620	8,149	11%	19%
Glasgow City	96,263	109,448	109,448	14%	14%
Sources : see under Table 2					

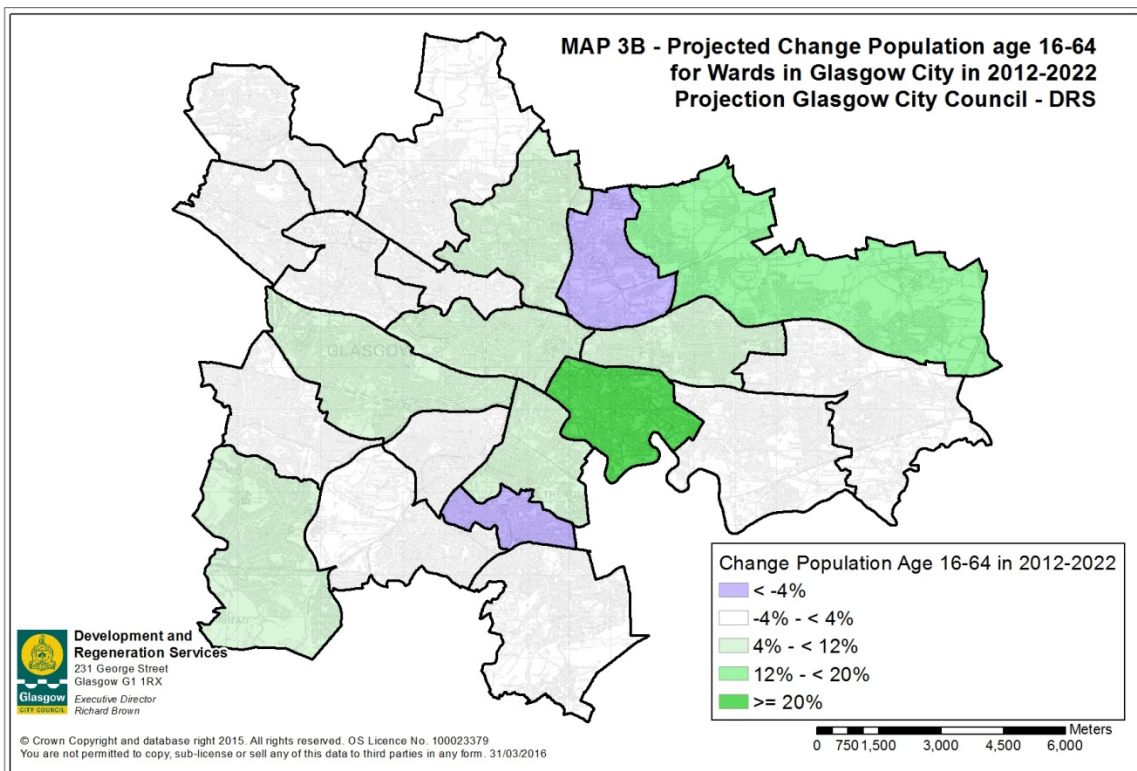
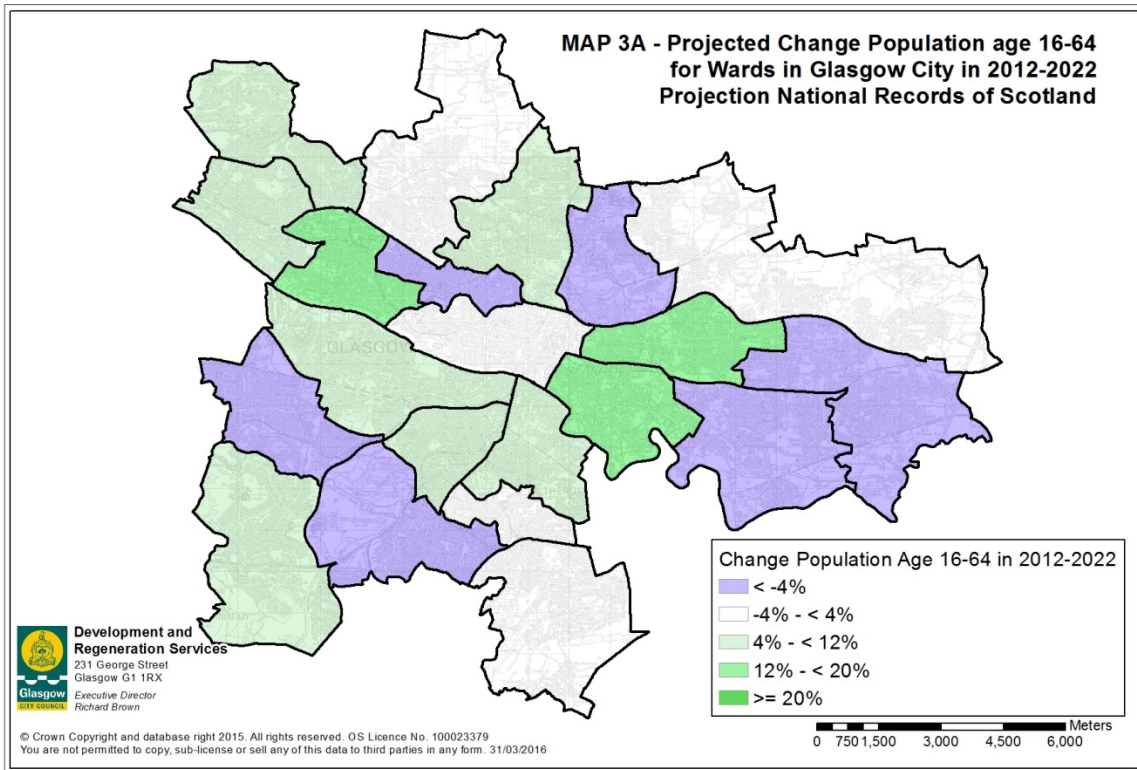


Number of non-elderly Adults (age 16-64)

- 4.18 Map 3A (see next page) shows the projected change in the population age 16-64 for Glasgow's Wards in 2012 to 2022. The most notable projected changes in the number of non-elderly adults are: for Glasgow East: increases in Calton and East Centre; for Glasgow West: increases in Partick West, Garscadden/Scotstounhill and Drumchapel/Anniesland; and for Glasgow South: increases in Govan, Pollokshields and Southside Central. The number of non-elderly adults is projected to reduce by 4% or more in Craigton, Newlands/Auldburn, Hillhead, Springburn, Shettleston and Baillieston.
- 4.19 The main differences with the GCC-DRS projections (see Maps 3A and 3B and Table 6) with respect to numbers of non-elderly adults are (1) a lower rate of change in Glasgow East (North East, Baillieston, Shettleston and Calton), (2) a higher rate of growth in Glasgow West (Partick West, Garscadden/Scotstounhill and Drumchapel/Anniesland) and (3) in Glasgow South a more positive population change (Govan, Pollokshields and Langside). Numbers of non-elderly adults are projected to reduce in Newlands/Auldburn, grow at a slower rate in Anderston/City and grow at a higher rate in East Centre. Numbers in Glasgow North West are expected to be more stable, as compared with the GCC-DRS projections.

Table 6 - Comparison of Change in Age 16-64 for MWWs in Glasgow City in 2012-2022

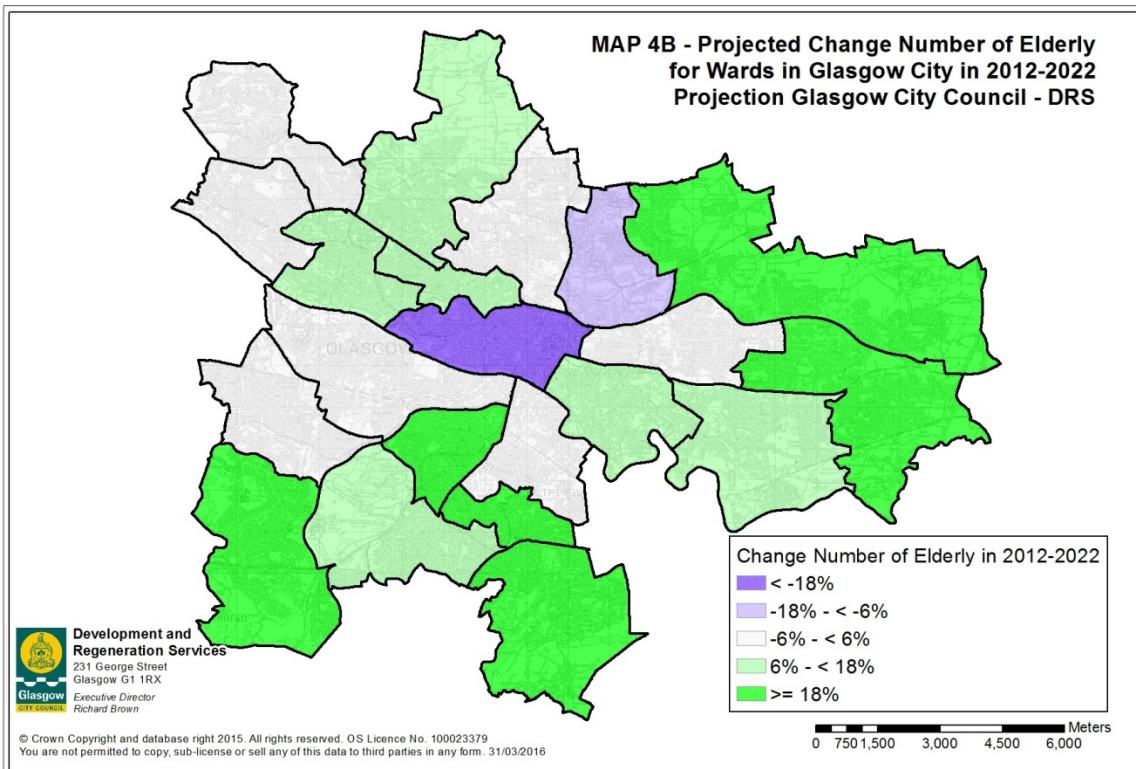
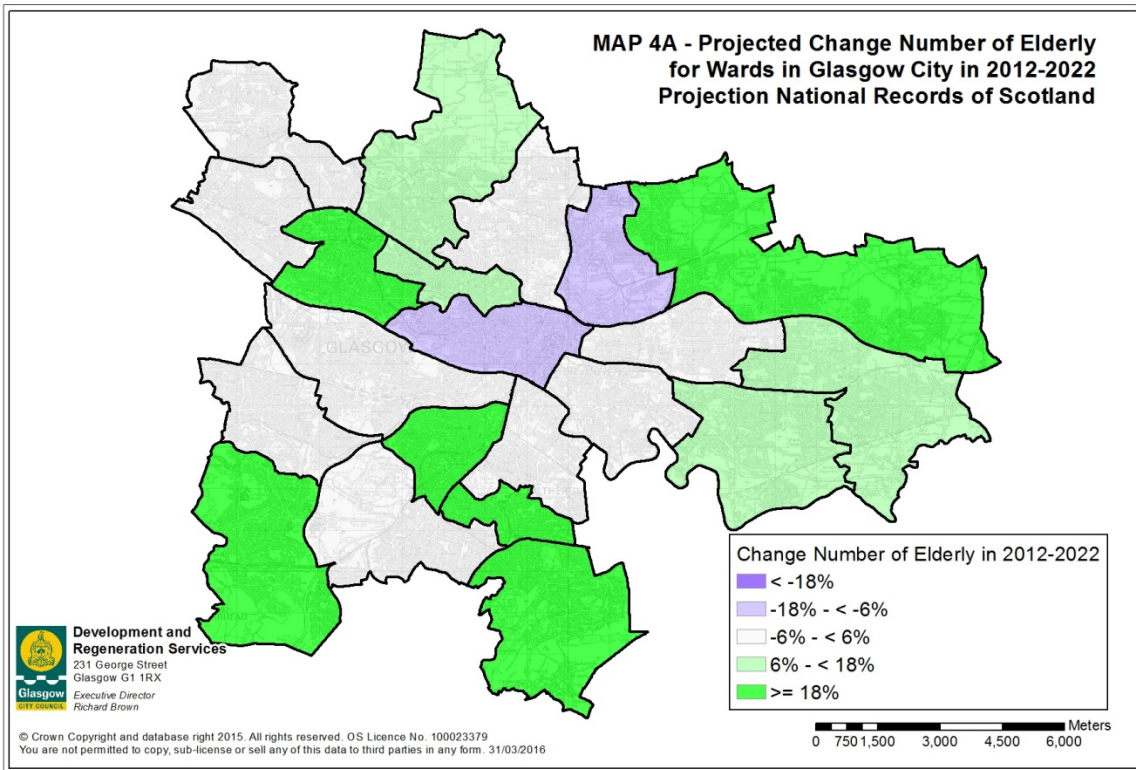
Multi Member Ward	2012	NRS 2022	DRS 2022	% change NRS	2012-2022 DRS
Linn	19,196	18,598	18,627	-3%	-3%
Newlands/Auldburn	15,026	13,743	14,965	-9%	0%
Greater Pollok	22,003	23,058	23,035	5%	5%
Craigton	18,737	17,888	18,575	-5%	-1%
Govan	22,169	24,281	23,062	10%	4%
Pollokshields	15,779	17,567	15,330	11%	-3%
Langside	17,291	17,238	16,224	0%	-6%
Southside Central	20,210	21,932	21,679	9%	7%
Calton	18,286	21,571	23,095	18%	26%
Anderston/City	25,230	25,860	27,478	2%	9%
Hillhead	21,303	20,397	21,322	-4%	0%
Partick West	24,924	28,303	25,281	14%	1%
Garscadden/Scotstounhill	19,353	20,694	18,974	7%	-2%
Drumchapel/Anniesland	19,168	20,512	19,081	7%	0%
Maryhill/Kelvin	18,822	18,158	18,992	-4%	1%
Canal	22,400	23,572	24,397	5%	9%
Springburn	14,260	13,527	13,367	-5%	-6%
East Centre	20,833	23,701	21,721	14%	4%
Shettleston	17,026	16,219	17,176	-5%	1%
Baillieston	21,504	20,205	22,163	-6%	3%
North East	22,339	22,740	25,220	2%	13%
Glasgow City	415,859	429,764	429,764	3%	3%
Sources : see under Table 2					



Number of Elderly (age 65+)

- 4.20 Map 4A (see next page) shows the projected change in the number of elderly for Glasgow's Wards in 2012 to 2022. There are increases for Greater Pollok, Pollokshields, Langside and Linn in Glasgow South and for Maryhill/Kelvin, Partick West and Hillhead in Glasgow West. In Glasgow East the number of elderly is expected to increase considerably in Baillieston and North East. Reductions are projected for Springburn, Anderston/City, East Centre and Southside Central.
- 4.21 The projection results for the two sets of projections are more similar than for children and non-elderly adults. The main differences with the GCC-DRS projections (see Maps 4A and 4B and Table 7) are a smaller loss of elderly in Anderston/City and a higher rise of the elderly population for Hillhead and Partick West in Glasgow West and Pollokshields in Glasgow South. The NRS projection results show a higher loss in Springburn and a lower rise in Calton, as compared with the GCC-DRS projections.

Multi Member Ward	2012	NRS 2022	DRS 2022	% change NRS	2012-2022 DRS
Linn	4,204	5,223	5,287	24%	26%
Newlands/Auldburn	4,012	4,194	4,290	5%	7%
Greater Pollok	4,128	5,228	5,139	27%	24%
Craigton	5,258	5,306	5,386	1%	2%
Govan	4,257	4,375	4,366	3%	3%
Pollokshields	2,714	3,434	3,336	27%	23%
Langside	2,875	3,497	3,413	22%	19%
Southside Central	3,826	3,645	3,746	-5%	-2%
Calton	3,069	3,240	3,373	6%	10%
Anderston/City	2,056	1,927	1,628	-6%	-21%
Hillhead	2,650	3,102	2,857	17%	8%
Partick West	4,267	5,249	5,029	23%	18%
Garscadden/Scotstounhill	4,855	5,045	4,966	4%	2%
Drumchapel/Anniesland	4,089	4,270	4,312	4%	5%
Maryhill/Kelvin	4,116	4,744	4,761	15%	16%
Canal	4,687	4,766	4,771	2%	2%
Springburn	2,955	2,442	2,607	-17%	-12%
East Centre	4,894	4,663	4,660	-5%	-5%
Shettleston	4,639	4,995	5,166	8%	11%
Baillieston	5,095	5,952	6,079	17%	19%
North East	4,312	5,187	5,312	20%	23%
Glasgow City	82,958	90,484	90,484	9%	9%
Sources : see under Table 2					



Number of Households

- 4.22 The number of households is expected to rise by 2,600 per year in 2012-2022. NRS expects over 12% household growth to take place in East Centre, Calton, Anderston/City, Partick West and Pollokshields. Reductions in household numbers are projected for Springburn and Newlands/Auldburn (see Map 5A).
- 4.23 The greatest differences with the GCC-DRS projections are: (1) lower growth in household numbers for North East, Baillieston, Shettleston and Calton; (2) a fall instead of a rise in households for Newlands/Auldburn and (3) a higher rate of growth for households in Partick West, Garscadden/Scotstounhill, Drumchapel/Annie'sland, Pollokshields, Anderston/City and East Centre (see Maps 5A and 5B and Table 8).

Table 8 - Comparison of Household Change for MMWs in Glasgow City in 2012-2022

Multi Member Ward	2012	NRS 2022	DRS 2022	% change NRS	2012-2022 DRS
Linn	12,915	13,476	13,831	4%	7%
Newlands/Auldburn	10,740	10,505	11,278	-2%	5%
Greater Pollok	13,567	14,828	15,185	9%	12%
Craigton	13,268	13,397	13,648	1%	3%
Govan	16,159	18,070	17,879	12%	10%
Pollokshields	9,789	11,497	10,476	17%	7%
Langside	12,525	13,318	13,001	6%	4%
Southside Central	15,116	16,521	16,652	9%	11%
Calton	12,955	16,085	16,835	24%	29%
Anderston/City	14,183	16,724	16,223	18%	13%
Hillhead	13,198	13,790	13,942	4%	5%
Partick West	18,045	21,756	19,541	21%	9%
Garscadden/Scotstounhill	14,296	15,740	14,372	10%	3%
Drumchapel/Annie'sland	13,764	15,244	14,459	11%	6%
Maryhill/Kelvin	13,295	13,910	14,352	5%	8%
Canal	15,396	16,870	17,517	10%	12%
Springburn	11,043	10,315	10,397	-7%	-3%
East Centre	15,095	17,498	16,196	16%	8%
Shettleston	12,514	12,828	13,674	3%	8%
Baillieston	14,029	14,441	15,671	3%	11%
North East	14,242	15,294	16,979	7%	20%
Glasgow City	286,134	312,107	312,107	9%	9%

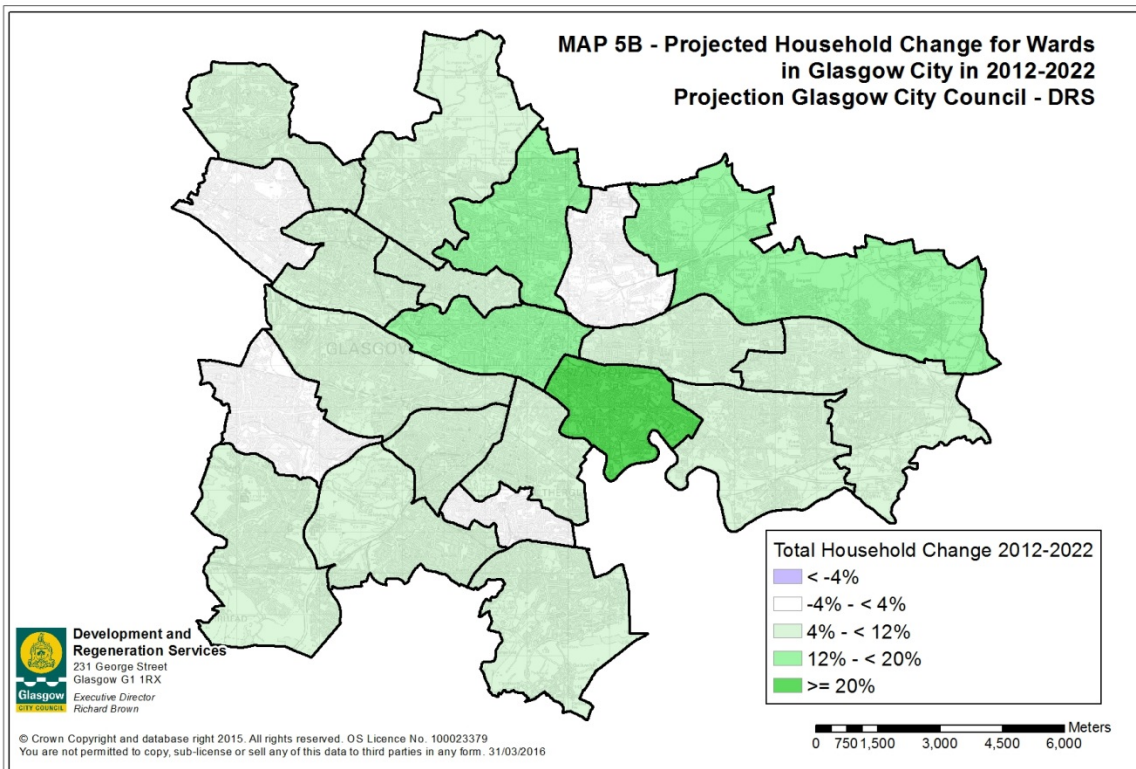
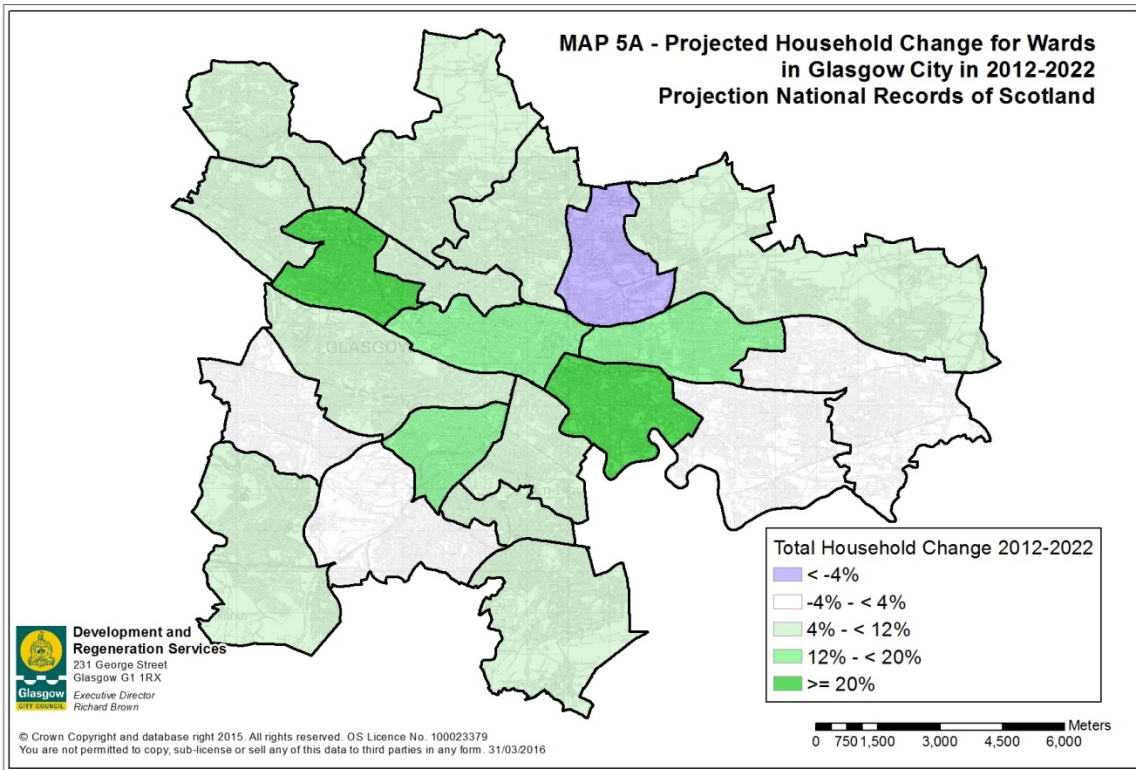
Source:

The 2012 ward estimates are based on 2012 household estimates for data zones and the NRS 2022 projected household figures are from projections by

National Records of Scotland (NRS) - CROWN COPYRIGHT RESERVED

DRS 2022 projected household figures are from projections by Glasgow City Council - DRS

The DRS 2022 projections have been constrained to the NRS 2012-base principal household projection for Glasgow City.



Appendix A – Tables and Map of Electoral Wards

List of Tables.

- A1 – Population by Age for Multi-Member Wards in Glasgow City in 2012
- A2 – Projected Population by Age for Multi-Member Wards in Glasgow City in 2022 – National Records of Scotland Projections
- A3 – Projected Population by Age for Multi-Member Wards in Glasgow City in 2026 – National Records of Scotland Projections
- A4 – Projected Population by Age for Multi-Member Wards in Glasgow City in 2022 – Glasgow City Council - DRS Projections
- A5 – Population Change by Age for Multi-Member Wards in Glasgow City in 2012 to 2022 – National Records of Scotland Projections
- A6 – Population Change by Age for Multi-Member Wards in Glasgow City in 2022 to 2026 – National Records of Scotland Projections
- A7 – Population Change by Age for Multi-Member Wards in Glasgow City in 2012 to 2022 – Glasgow City Council - DRS Projections
- A8 – Differences Population by Age for Multi-Member Wards in Glasgow City in 2022 – NRS Projections minus Glasgow City Council - DRS Projections

Map Glasgow City Council Electoral Wards

Table A2 - Projected Population by Age for Multi-Member Wards in Glasgow City in 2022 - National Records of Scotland Projections													
Multi Member Ward	0-4	5-11	12-15	children	16-29	30-44	45-64	age 16-64	65-74	75-84	85+	age 65+	Total
Linn	1,802	2,530	1,370	5,702	4,818	6,087	7,693	18,598	3,077	1,569	578	5,223	29,523
Newlands/Auldburn	1,282	1,678	906	3,866	3,449	4,805	5,489	13,743	2,262	1,301	631	4,194	21,803
Greater Pollok	2,476	3,086	1,682	7,244	6,391	7,105	9,561	23,057	2,889	1,578	761	5,228	35,530
Craigton	1,931	2,628	1,442	6,001	4,420	6,217	7,250	17,888	2,734	1,701	871	5,306	29,195
Govan	2,162	2,480	1,079	5,721	7,201	9,444	7,637	24,281	2,477	1,305	593	4,375	34,378
Pollokshields	1,796	2,085	1,020	4,901	4,537	7,449	5,581	17,567	1,853	989	592	3,434	25,902
Langside	1,290	1,667	681	3,638	3,928	7,561	5,749	17,238	1,985	1,001	510	3,497	24,373
Southside Central	1,846	2,309	1,052	5,208	5,971	8,884	7,077	21,932	2,031	1,213	402	3,645	30,786
Calton	1,911	1,986	831	4,728	6,839	8,397	6,335	21,571	2,000	941	300	3,240	29,539
Anderston/City	1,020	1,080	423	2,523	10,895	9,668	5,297	25,860	1,163	573	191	1,927	30,310
Hillhead	1,255	1,452	558	3,265	8,208	7,297	4,892	20,397	1,656	959	487	3,102	26,764
Partick West	2,087	2,383	1,059	5,529	8,288	10,982	9,033	28,303	2,850	1,545	854	5,249	39,081
Garscadden/Scotstounhill	2,068	2,552	1,440	6,060	5,270	7,124	8,300	20,694	2,604	1,533	908	5,045	31,799
Drumchapel/Anniesland	2,273	2,946	1,507	6,726	5,147	7,719	7,646	20,512	2,373	1,295	602	4,270	31,508
Maryhill/Kelvin	1,692	2,074	918	4,684	4,981	6,568	6,608	18,158	2,588	1,419	737	4,744	27,585
Canal	2,187	2,673	1,286	6,146	7,307	8,250	8,014	23,572	2,559	1,642	564	4,766	34,483
Springburn	1,560	1,632	798	3,989	3,678	5,014	4,835	13,527	1,189	870	383	2,442	19,958
East Centre	2,114	2,508	1,063	5,684	6,935	9,769	6,998	23,701	2,341	1,555	767	4,663	34,049
Shettleston	1,490	1,867	874	4,231	4,022	5,364	6,833	16,219	2,652	1,638	705	4,995	25,445
Baillieston	1,829	2,664	1,488	5,981	5,097	6,081	9,026	20,205	3,230	1,946	777	5,952	32,138
North East	2,523	3,337	1,759	7,620	5,601	7,530	9,609	22,740	3,121	1,501	565	5,187	35,547
Glasgow City	38,594	47,618	23,236	109,448	122,983	157,316	149,465	429,764	49,633	28,072	12,779	90,484	629,696
Source:													
2022 Population figures are from projections for Wards by National Records of Scotland													
CROWN COPYRIGHT RESERVED													

Table A3 - Projected Population by Age for Multi-Member Wards in Glasgow City in 2026 - National Records of Scotland Projections													
Multi Member Ward	0-4	5-11	12-15	children	16-29	30-44	45-64	age 16-64	65-74	75-84	85+	age 65+	Total
Linn	1,784	2,523	1,473	5,781	4,708	6,078	7,514	18,300	3,251	1,794	643	5,688	29,768
Newlands/Auldburn	1,222	1,602	907	3,731	3,236	4,781	5,123	13,140	2,377	1,358	639	4,374	21,245
Greater Pollok	2,587	3,250	1,776	7,614	6,221	7,533	9,225	22,980	3,444	1,718	845	6,007	36,601
Craigton	1,932	2,704	1,461	6,098	4,300	6,211	6,865	17,376	3,076	1,724	869	5,670	29,144
Govan	2,206	2,705	1,289	6,200	7,189	10,023	7,828	25,040	2,792	1,383	600	4,775	36,015
Pollokshields	1,815	2,227	1,148	5,190	4,583	7,728	5,912	18,223	2,035	1,148	659	3,841	27,254
Langside	1,230	1,639	875	3,744	3,941	7,319	5,901	17,160	2,188	1,208	522	3,918	24,822
Southside Central	1,808	2,203	1,271	5,282	6,004	9,008	7,491	22,503	2,273	1,194	400	3,867	31,652
Calton	2,014	2,328	1,085	5,426	6,733	9,180	6,858	22,771	2,257	1,029	298	3,584	31,781
Anderston/City	905	1,140	570	2,615	10,357	9,814	6,236	26,407	1,362	576	173	2,111	31,133
Hillhead	1,163	1,471	735	3,369	7,944	7,129	5,117	20,190	1,700	1,090	528	3,317	26,876
Partick West	2,155	2,695	1,307	6,158	8,285	11,567	9,622	29,474	3,206	1,789	902	5,897	41,529
Garscadden/Scotstounhill	2,099	2,686	1,456	6,242	5,413	7,310	8,281	21,003	3,028	1,600	937	5,566	32,810
Drumchapel/Anniesland	2,276	3,155	1,583	7,014	5,221	7,957	7,852	21,030	2,646	1,416	606	4,668	32,712
Maryhill/Kelvin	1,672	2,171	1,047	4,890	4,678	6,772	6,405	17,854	2,716	1,593	794	5,103	27,847
Canal	2,250	2,896	1,495	6,641	7,149	8,552	8,274	23,975	2,798	1,666	617	5,082	35,697
Springburn	1,462	1,599	823	3,883	3,465	4,907	4,603	12,975	1,352	766	405	2,523	19,381
East Centre	2,200	2,780	1,385	6,364	6,921	10,414	7,260	24,595	2,663	1,532	788	4,983	35,943
Shettleston	1,471	1,931	994	4,396	3,712	5,540	6,337	15,589	3,004	1,687	747	5,438	25,424
Baillieston	1,817	2,647	1,574	6,038	4,724	6,238	8,278	19,240	3,631	2,131	876	6,638	31,915
North East	2,516	3,441	1,859	7,816	5,454	7,773	9,372	22,599	3,672	1,675	607	5,955	36,370
Glasgow City	38,585	49,795	26,112	114,492	120,237	161,834	150,353	432,424	55,471	30,078	13,454	99,003	645,919
Source:													
2026 Population figures are from projections for Wards by National Records of Scotland													
CROWN COPYRIGHT RESERVED													

Table A4 - Projected Population by Age for Multi-Member Wards in Glasgow City in 2022 - Glasgow City Council - DRS Projections													
Multi Member Ward	0-4	5-11	12-15	children	16-29	30-44	45-64	age 16-64	65-74	75-84	85+	age 65+	Total
Linn	1,767	2,476	1,378	5,621	4,466	6,232	7,929	18,627	3,108	1,572	607	5,287	29,535
Newlands/Auldburn	1,436	1,878	997	4,311	3,620	5,427	5,918	14,965	2,315	1,341	634	4,290	23,566
Greater Pollok	2,387	3,079	1,697	7,163	6,057	7,118	9,860	23,035	2,873	1,540	726	5,139	35,337
Craigton	1,949	2,730	1,510	6,189	4,479	6,456	7,640	18,575	2,794	1,711	881	5,386	30,150
Govan	2,162	2,418	1,008	5,588	5,926	9,493	7,643	23,062	2,416	1,310	640	4,366	33,016
Pollokshields	1,553	1,932	938	4,423	3,152	6,702	5,476	15,330	1,921	941	474	3,336	23,089
Langside	1,241	1,589	625	3,455	2,877	7,541	5,806	16,224	1,976	983	454	3,413	23,092
Southside Central	2,043	2,413	1,056	5,512	5,311	9,213	7,155	21,679	2,019	1,246	481	3,746	30,937
Calton	2,080	2,144	818	5,042	7,908	9,013	6,174	23,095	1,968	999	406	3,373	31,510
Anderston/City	1,165	934	401	2,500	14,454	9,191	3,833	27,478	968	497	163	1,628	31,606
Hillhead	1,294	1,259	553	3,106	9,887	7,194	4,241	21,322	1,574	905	378	2,857	27,285
Partick West	1,744	2,115	895	4,754	7,194	9,578	8,509	25,281	2,824	1,505	700	5,029	35,064
Garscadden/Scotstounhill	1,802	2,438	1,389	5,629	4,263	6,460	8,251	18,974	2,609	1,524	833	4,966	29,569
Drumchapel/Anniesland	2,026	2,830	1,492	6,348	4,335	7,208	7,538	19,081	2,378	1,326	608	4,312	29,741
Maryhill/Kelvin	1,789	2,203	933	4,925	5,793	6,440	6,759	18,992	2,602	1,462	697	4,761	28,678
Canal	2,307	2,760	1,290	6,357	8,626	7,816	7,955	24,397	2,529	1,616	626	4,771	35,525
Springburn	1,510	1,603	795	3,908	3,304	5,083	4,980	13,367	1,249	933	425	2,607	19,882
East Centre	2,002	2,455	1,002	5,459	5,260	9,510	6,951	21,721	2,347	1,511	802	4,660	31,840
Shettleston	1,585	1,981	956	4,522	4,139	5,936	7,101	17,176	2,733	1,675	758	5,166	26,864
Baillieston	2,049	2,851	1,587	6,487	5,741	6,906	9,516	22,163	3,267	1,948	864	6,079	34,729
North East	2,703	3,530	1,916	8,149	6,191	8,799	10,230	25,220	3,163	1,527	622	5,312	38,681
Glasgow City	38,594	47,618	23,236	109,448	122,983	157,316	149,465	429,764	49,633	28,072	12,779	90,484	629,696
Source:													
Population figures are from projections for Wards by Glasgow City Council - DRS													
The 2022 projections have been constrained to NRS 2012-base principal population projection for Glasgow City													

Table A5 - Population Change by Age for Multi-Member Wards in Glasgow City in 2012 to 2022 - National Records of Scotland Projections

Multi Member Ward	0-4	5-11	12-15	children	16-29	30-44	45-64	age 16-64	65-74	75-84	85+	age 65+	Total
Linn	28	275	-114	189	-668	245	-175	-598	737	198	85	1,019	610
Newlands/Auldburn	-132	-34	-119	-285	-727	234	-790	-1,283	214	-150	118	182	-1,386
Greater Pollok	272	201	-154	319	-22	267	809	1,054	662	84	354	1,100	2,474
Craigton	79	332	-41	370	-944	568	-474	-849	159	-266	155	48	-431
Govan	427	665	67	1,159	-678	2,308	483	2,112	340	-217	-5	118	3,390
Pollokshields	257	432	134	823	-395	1,711	472	1,788	485	40	195	720	3,331
Langside	58	553	90	701	-1,119	691	375	-53	543	-26	104	622	1,270
Southside Central	-70	513	30	474	-508	1,544	686	1,722	-31	-142	-7	-181	2,016
Calton	619	742	-24	1,337	-718	3,079	924	3,285	335	-180	17	171	4,793
Anderston/City	160	391	81	632	-4,159	3,464	1,325	630	67	-180	-16	-129	1,133
Hillhead	113	417	-15	515	-2,652	1,536	210	-906	312	20	120	452	61
Partick West	583	761	66	1,410	-741	2,941	1,179	3,379	686	80	216	982	5,771
Garscadden/Scotstounhill	173	320	68	561	-192	797	736	1,341	334	-272	128	190	2,092
Drumchapel/Anniesland	317	626	178	1,121	-842	1,596	590	1,344	322	-119	-22	181	2,646
Maryhill/Kelvin	181	447	-92	536	-1,217	979	-427	-664	427	21	180	628	499
Canal	430	659	37	1,126	-1,060	1,578	653	1,172	-48	55	71	79	2,376
Springburn	-77	-4	-121	-203	-808	67	8	-733	-366	-218	71	-513	-1,449
East Centre	578	820	22	1,419	-630	3,303	196	2,868	-36	-298	103	-231	4,057
Shettleston	139	314	-208	245	-882	514	-439	-807	231	-22	147	356	-206
Baillieston	-3	211	-242	-34	-922	-169	-209	-1,299	412	191	255	857	-476
North East	177	540	51	769	-838	587	652	401	738	38	99	875	2,045
Glasgow City	4,309	9,182	-306	13,185	-20,722	27,841	6,786	13,905	6,522	-1,365	2,369	7,526	34,616

Source:

2012 Population estimates for data zones from National Records of Scotland

2022 Population figures are from projections for Wards by National Records of Scotland

CROWN COPYRIGHT RESERVED

The ward estimates are based on 2012 population estimates for data zones in Glasgow

Table A6 - Population Change by Age for Multi-Member Wards in Glasgow City in 2022 to 2026 - National Records of Scotland Projections

Multi Member Ward	0-4	5-11	12-15	children	16-29	30-44	45-64	age 16-64	65-74	75-84	85+	age 65+	Total
Linn	-18	-7	104	79	-110	-10	-179	-299	175	226	65	465	245
Newlands/Auldburn	-60	-77	1	-135	-213	-24	-366	-603	115	57	8	180	-558
Greater Pollok	111	164	94	370	-170	428	-336	-78	555	140	84	780	1,072
Craigton	2	76	19	97	-121	-6	-385	-512	342	23	-1	364	-51
Govan	44	224	210	479	-11	579	191	759	314	78	7	399	1,636
Pollokshields	19	142	128	288	46	280	330	656	182	159	67	408	1,352
Langside	-60	-28	193	105	13	-242	152	-78	203	206	12	421	449
Southside Central	-38	-106	218	74	33	124	414	571	242	-19	-1	221	867
Calton	103	342	254	699	-106	783	523	1,200	257	88	-2	343	2,242
Anderston/City	-115	60	147	92	-538	146	939	547	199	3	-19	184	822
Hillhead	-92	19	177	105	-264	-168	225	-207	44	130	40	215	112
Partick West	69	312	248	629	-3	585	589	1,171	356	245	48	649	2,448
Garscadden/Scotstounhill	31	134	16	181	143	186	-19	309	424	67	29	521	1,012
Drumchapel/Anniesland	3	209	76	288	74	238	205	518	273	121	4	398	1,203
Maryhill/Kelvin	-20	97	129	206	-303	204	-203	-303	128	175	57	359	262
Canal	62	224	209	495	-159	302	260	403	239	24	53	316	1,214
Springburn	-98	-33	25	-106	-212	-108	-233	-553	164	-104	21	81	-577
East Centre	86	272	322	680	-14	646	262	894	322	-23	20	320	1,894
Shettleston	-19	64	119	165	-309	176	-496	-629	352	49	43	443	-21
Baillieston	-12	-17	87	57	-373	156	-748	-965	401	185	99	685	-223
North East	-7	104	100	197	-147	243	-237	-141	551	175	42	767	823
Glasgow City	-9	2,177	2,876	5,044	-2,746	4,518	888	2,660	5,838	2,006	675	8,519	16,223

Sources:

2022 and 2026 population figures are from projections for Wards by National Records of Scotland

CROWN COPYRIGHT RESERVED

Table A7 - Population Change by Age for Multi-Member Wards in Glasgow City in 2012 to 2022 - Glasgow City Council - DRS Projections

Multi Member Ward	0-4	5-11	12-15	children	16-29	30-44	45-64	age 16-64	65-74	75-84	85+	age 65+	Total
Linn	-7	221	-106	108	-1,020	390	61	-569	768	201	114	1,083	622
Newlands/Auldburn	22	166	-28	160	-556	856	-361	-61	267	-110	121	278	377
Greater Pollok	183	194	-139	238	-356	280	1,108	1,032	646	46	319	1,011	2,281
Craigton	97	434	27	558	-885	807	-84	-162	219	-256	165	128	524
Govan	427	603	-4	1,026	-1,953	2,357	489	893	279	-212	42	109	2,028
Pollokshields	14	279	52	345	-1,780	964	367	-449	553	-8	77	622	518
Langside	9	475	34	518	-2,170	671	432	-1,067	534	-44	48	538	-11
Southside Central	127	617	34	778	-1,168	1,873	764	1,469	-43	-109	72	-80	2,167
Calton	788	900	-37	1,651	351	3,695	763	4,809	303	-122	123	304	6,764
Anderston/City	305	245	59	609	-600	2,987	-139	2,248	-128	-256	-44	-428	2,429
Hillhead	152	224	-20	356	-973	1,433	-441	19	230	-34	11	207	582
Partick West	240	493	-98	635	-1,835	1,537	655	357	660	40	62	762	1,754
Garscadden/Scotstounhill	-93	206	17	130	-1,199	133	687	-379	339	-281	53	111	-138
Drumchapel/Anniesland	70	510	163	743	-1,654	1,085	482	-87	327	-88	-16	223	879
Maryhill/Kelvin	278	576	-77	777	-405	851	-276	170	441	64	140	645	1,592
Canal	550	746	41	1,337	259	1,144	594	1,997	-78	29	133	84	3,418
Springburn	-127	-33	-124	-284	-1,182	136	153	-893	-306	-155	113	-348	-1,525
East Centre	466	767	-39	1,194	-2,305	3,044	149	888	-30	-342	138	-234	1,848
Shettleston	234	428	-126	536	-765	1,086	-171	150	312	15	200	527	1,213
Baillieston	217	398	-143	472	-278	656	281	659	449	193	342	984	2,115
North East	357	733	208	1,298	-248	1,856	1,273	2,881	780	64	156	1,000	5,179
Glasgow City	4,309	9,182	-306	13,185	-20,722	27,841	6,786	13,905	6,522	-1,365	2,369	7,526	34,616

Sources:

Population estimates 2012 for data zones from National Records of Scotland

CROWN COPYRIGHT RESERVED

The ward estimates are based on 2012 population estimates for data zones in Glasgow

2022 population figures are from projections for Wards by Glasgow City Council - DRS

The 2022 projections have been constrained to the NRS 2012-base principal population projection for Glasgow City

Table A8 - Differences Population by Age for Wards in Glasgow City in 2022: NRS Projections minus Glasgow City Council - DRS Projections

Multi Member Ward	0-4	5-11	12-15	children	16-29	30-44	45-64	age 16-64	65-74	75-84	85+	age 65+	Total
Linn	35	54	-8	81	352	-145	-236	-29	-31	-3	-29	-64	-12
Newlands/Auldburn	-154	-200	-91	-445	-171	-622	-429	-1,222	-53	-40	-3	-96	-1,763
Greater Pollok	89	7	-15	81	334	-13	-299	22	16	38	35	89	193
Craigton	-18	-102	-68	-188	-59	-239	-390	-687	-60	-10	-10	-80	-955
Govan	0	62	71	133	1,275	-49	-6	1,219	61	-5	-47	9	1,362
Pollokshields	243	153	82	478	1,385	747	105	2,237	-68	48	118	98	2,813
Langside	49	78	56	183	1,051	20	-57	1,014	9	18	56	84	1,281
Southside Central	-197	-104	-4	-304	660	-329	-78	253	12	-33	-79	-101	-151
Calton	-169	-158	13	-314	-1,069	-616	161	-1,524	32	-58	-106	-133	-1,971
Anderston/City	-145	146	22	23	-3,559	477	1,464	-1,618	195	76	28	299	-1,296
Hillhead	-39	193	5	159	-1,679	103	651	-925	82	54	109	245	-521
Partick West	343	268	164	775	1,094	1,404	524	3,022	26	40	154	220	4,017
Garscadden/Scotstounhill	266	114	51	431	1,007	664	49	1,720	-5	9	75	79	2,230
Drumchapel/Anniesland	247	116	15	378	812	511	108	1,431	-5	-31	-6	-42	1,767
Maryhill/Kelvin	-97	-129	-15	-241	-812	128	-151	-834	-14	-43	40	-17	-1,093
Canal	-120	-87	-4	-211	-1,319	434	59	-825	30	26	-62	-5	-1,042
Springburn	50	29	3	81	374	-69	-145	160	-60	-63	-42	-165	76
East Centre	112	53	61	225	1,675	259	47	1,980	-6	44	-35	3	2,209
Shettleston	-95	-114	-82	-291	-117	-572	-268	-957	-81	-37	-53	-171	-1,419
Baillieston	-220	-187	-99	-506	-644	-825	-490	-1,958	-37	-2	-87	-127	-2,591
North East	-180	-193	-157	-529	-590	-1,269	-621	-2,480	-42	-26	-57	-125	-3,134
Glasgow City	0	0	0	0	0	0	0	0	0	0	0	0	0

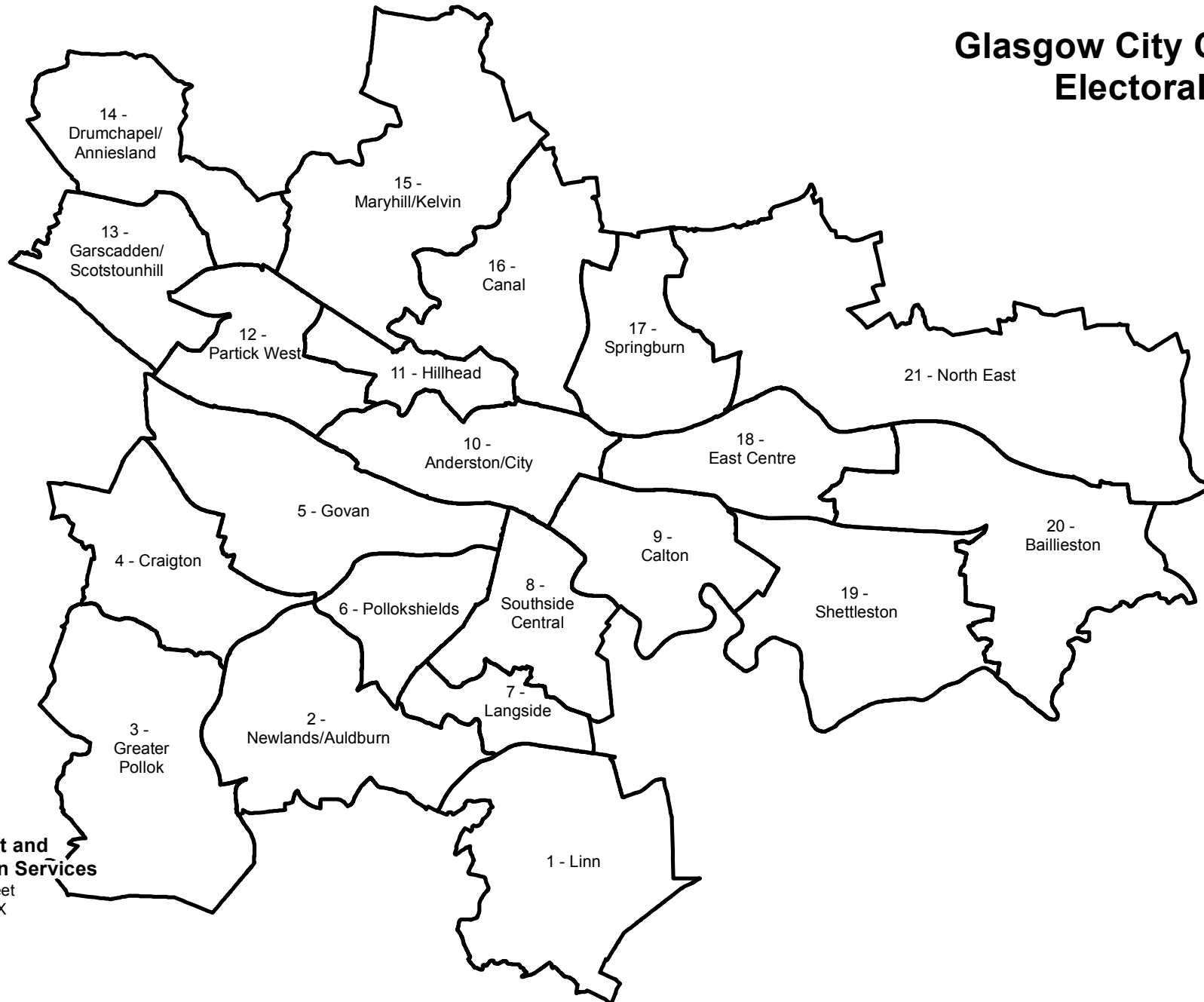
Sources:

2022 Population figures are from projections for Wards by National Records of Scotland

CROWN COPYRIGHT RESERVED

2022 Population figures are from projections for Wards by Glasgow City Council - DRS

Glasgow City Council Electoral Wards



**Development and
Regeneration Services**

231 George Street
Glasgow G1 1RX



*Executive Director
Richard Brown*