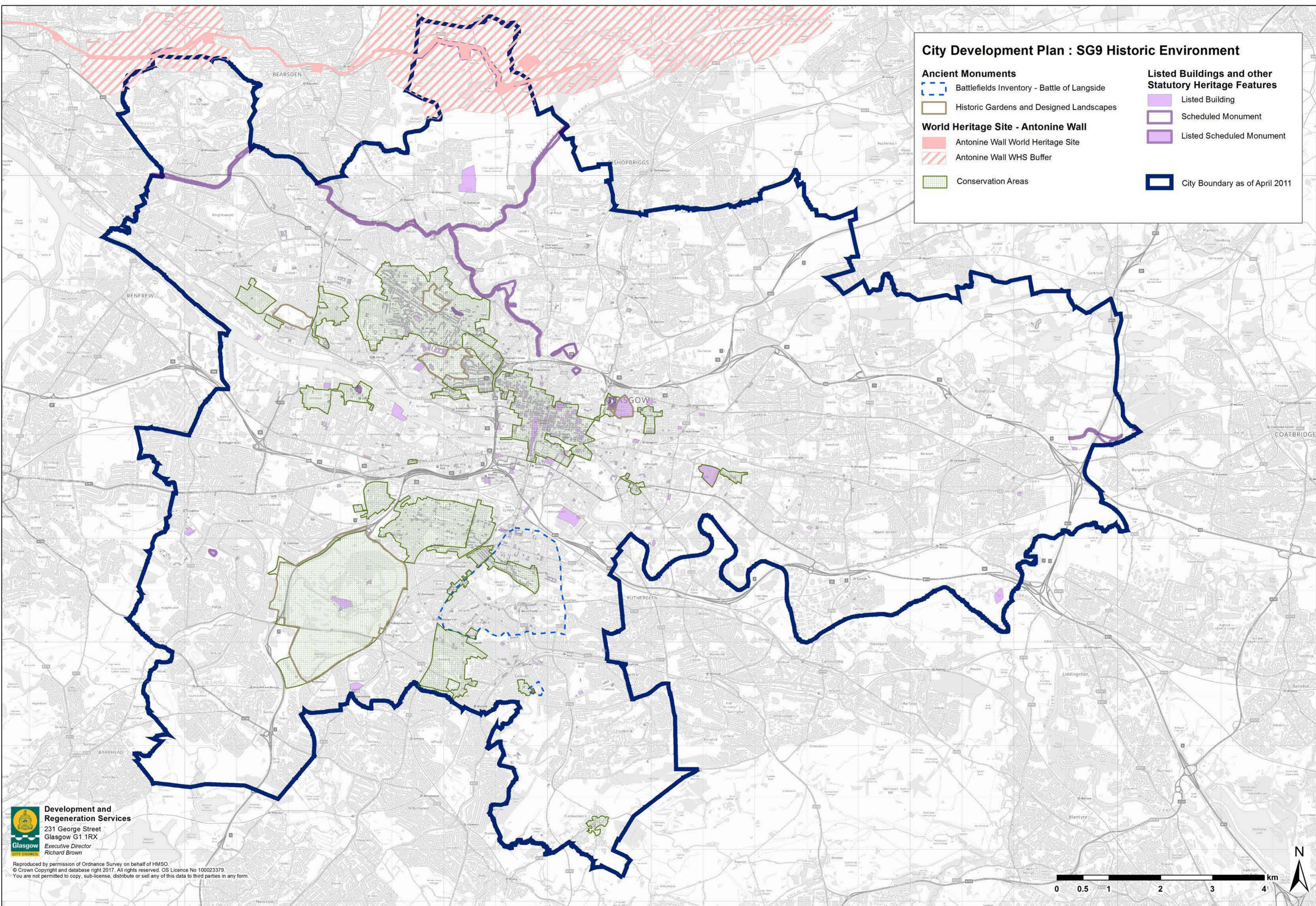


City Development Plan : SG9 Historic Environment

- | | | | |
|---|---|---|--------------------------------|
| Ancient Monuments | | Listed Buildings and other Statutory Heritage Features | |
|  | Battlefields Inventory - Battle of Langside |  | Listed Building |
|  | Historic Gardens and Designed Landscapes |  | Scheduled Monument |
| World Heritage Site - Antonine Wall | |  | Listed Scheduled Monument |
|  | Antonine Wall World Heritage Site |  | City Boundary as of April 2011 |
|  | Antonine Wall WHS Buffer | | |
|  | Conservation Areas | | |



Development and Regeneration Services
 231 George Street
 Glasgow G1 1RX
 Executive Director
 Richard Brown

Reproduced by permission of Ordnance Survey on behalf of HMSO.
 © Crown Copyright and database right 2017. All rights reserved. OS Licence No 100023379.
 You are not permitted to copy, sub-license, distribute or sell any of this data to third parties in any form.

