
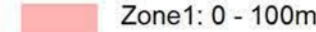


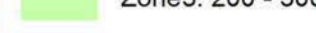
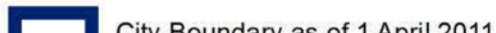
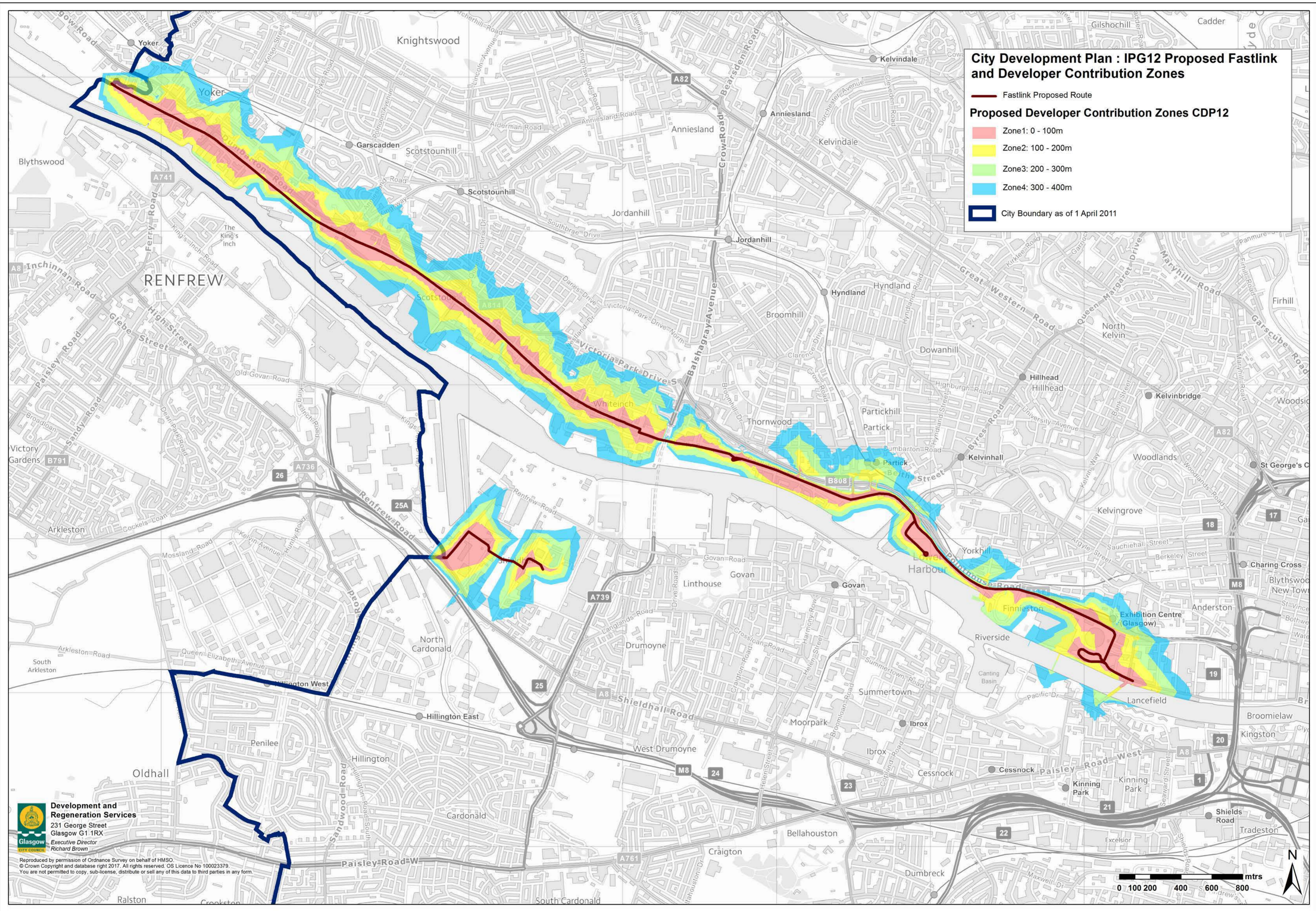


City Development Plan : IGP12 Proposed Fastlink and Developer Contribution Zones

-  Fastlink Proposed Route
- Proposed Developer Contribution Zones CDP12**
-  Zone1: 0 - 100m
-  Zone2: 100 - 200m
-  Zone3: 200 - 300m
-  Zone4: 300 - 400m
-  City Boundary as of 1 April 2011



Development and Regeneration Services
 231 George Street
 Glasgow G1 1RX
 Executive Director
 Richard Brown

Reproduced by permission of Ordnance Survey on behalf of HMSO.
 © Crown Copyright and database right 2017. All rights reserved. OS Licence No 100023379.
 You are not permitted to copy, sub-license, distribute or sell any of this data to third parties in any form.

