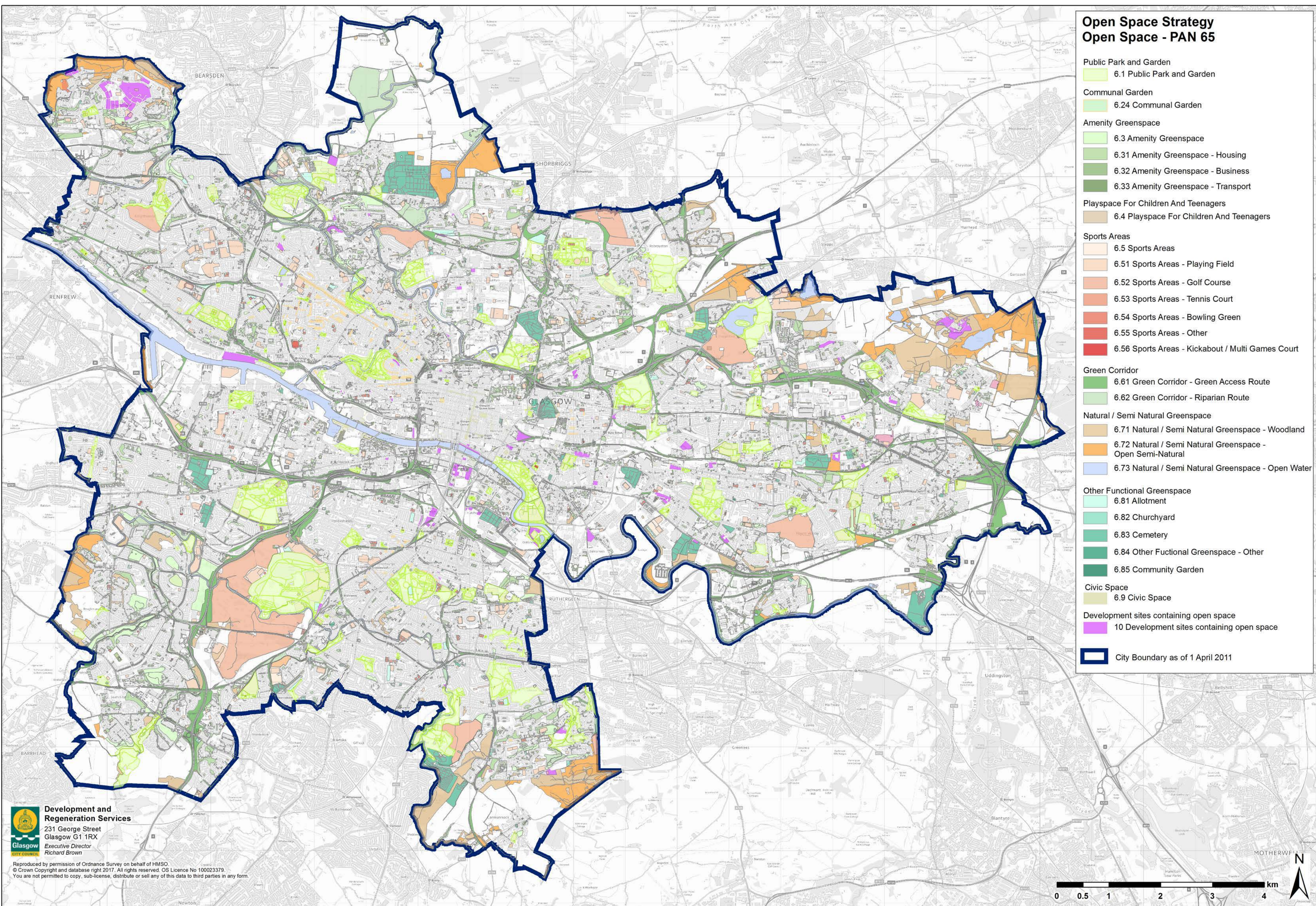


Open Space Strategy Open Space - PAN 65

- Public Park and Garden
 - 6.1 Public Park and Garden
- Communal Garden
 - 6.24 Communal Garden
- Amenity Greenspace
 - 6.3 Amenity Greenspace
 - 6.31 Amenity Greenspace - Housing
 - 6.32 Amenity Greenspace - Business
 - 6.33 Amenity Greenspace - Transport
- Playspace For Children And Teenagers
 - 6.4 Playspace For Children And Teenagers
- Sports Areas
 - 6.5 Sports Areas
 - 6.51 Sports Areas - Playing Field
 - 6.52 Sports Areas - Golf Course
 - 6.53 Sports Areas - Tennis Court
 - 6.54 Sports Areas - Bowling Green
 - 6.55 Sports Areas - Other
 - 6.56 Sports Areas - Kickabout / Multi Games Court
- Green Corridor
 - 6.61 Green Corridor - Green Access Route
 - 6.62 Green Corridor - Riparian Route
- Natural / Semi Natural Greenspace
 - 6.71 Natural / Semi Natural Greenspace - Woodland
 - 6.72 Natural / Semi Natural Greenspace - Open Semi-Natural
 - 6.73 Natural / Semi Natural Greenspace - Open Water
- Other Functional Greenspace
 - 6.81 Allotment
 - 6.82 Churchyard
 - 6.83 Cemetery
 - 6.84 Other Fuctional Greenspace - Other
 - 6.85 Community Garden
- Civic Space
 - 6.9 Civic Space
- Development sites containing open space
 - 10 Development sites containing open space
- City Boundary as of 1 April 2011



Development and Regeneration Services
 231 George Street
 Glasgow G1 1RX
 Executive Director
 Richard Brown

Reproduced by permission of Ordnance Survey on behalf of HMSO.
 © Crown Copyright and database right 2017. All rights reserved. OS Licence No 100023379.
 You are not permitted to copy, sub-license, distribute or sell any of this data to third parties in any form.

